

Datasheet for ABIN3032493
anti-RBMY1A1 antibody (AA 468-496)[Go to Product page](#)

2 Images

Overview

Quantity:	0.4 mL
Target:	RBMY1A1
Binding Specificity:	AA 468-496
Reactivity:	Human
Host:	Rabbit
Clonality:	Polyclonal
Conjugate:	This RBMY1A1 antibody is un-conjugated
Application:	Western Blotting (WB), ELISA

Product Details

Immunogen:	A portion of amino acids 468-496 from the human protein was used as the immunogen for this RBMY1A1 antibody.
Isotype:	Ig Fraction
Purification:	Antigen affinity purified

Target Details

Target:	RBMY1A1
Alternative Name:	RBMY1A1 (RBMY1A1 Products)
Background:	This gene encodes a protein containing an RNA-binding motif in the N-terminus and four SRGY (serine, arginine, glycine, tyrosine) boxes in the C-terminus. Multiple copies of this gene are found in the AZFb azoospermia factor region of chromosome Y and the encoded protein is

Target Details

thought to be involved in spermatogenesis. Most copies of this locus are pseudogenes, although six highly similar copies have full-length ORFs and are considered functional. Four functional copies of this gene are found within inverted repeat IR2, two functional copies of this gene are found in palindrome P3, along with two copies of PTPN13-like, Y-linked. [provided by RefSeq].

UniProt: [P0DJJ3](#)

Application Details

Application Notes: Titration of the RBMY1A1 antibody may be required due to differences in protocols and secondary/substrate sensitivity.\. Western blot: 1:1000

Restrictions: For Research Use only

Handling

Format: Liquid

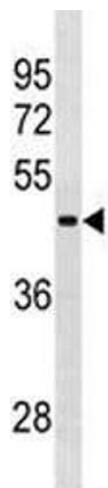
Buffer: In 1X PBS pH 7.4 with 0.09 % sodium azide

Preservative: Sodium azide

Precaution of Use: This product contains Sodium azide: a POISONOUS AND HAZARDOUS SUBSTANCE which should be handled by trained staff only.

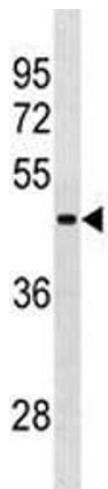
Storage: -20 °C

Storage Comment: Aliquot the RBMY1A1 antibody and store frozen at -20°C or colder. Avoid repeated freeze-thaw cycles.



Western Blotting

Image 1. RBMY1A1 antibody western blot analysis in NCI-H292 lysate.



Western Blotting

Image 2. RBMY1A1 antibody western blot analysis in NCI-H292 lysate.