

Datasheet for ABIN3032505
anti-RUNX3 antibody (AA 168-197)

5 Images

[Go to Product page](#)

Overview

Quantity:	0.4 mL
Target:	RUNX3
Binding Specificity:	AA 168-197
Reactivity:	Human
Host:	Rabbit
Clonality:	Polyclonal
Conjugate:	This RUNX3 antibody is un-conjugated
Application:	Western Blotting (WB), ELISA, Immunohistochemistry (IHC), Immunofluorescence (IF)

Product Details

Immunogen:	A portion of amino acids 168-197 from the human protein was used as the immunogen for this RUNX3 antibody.
Isotype:	Ig Fraction
Purification:	Antigen affinity purified

Target Details

Target:	RUNX3
Alternative Name:	RUNX3 (RUNX3 Products)
Background:	This gene encodes a member of the runt domain-containing family of transcription factors. A heterodimer of this protein and a beta subunit forms a complex that binds to the core DNA sequence 5'-PYGPYGGT-3' found in a number of enhancers and promoters, and can either

Target Details

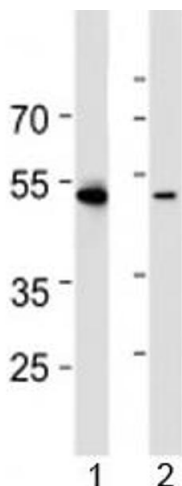
activate or suppress transcription. It also interacts with other transcription factors. It functions as a tumor suppressor, and the gene is frequently deleted or transcriptionally silenced in cancer. Multiple transcript variants encoding different isoforms have been found for this gene.

UniProt: [Q13761](#)

Application Details

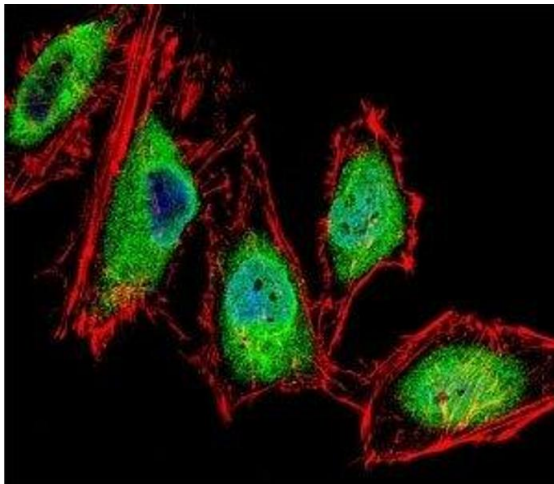
Application Notes:	Titration of the RUNX3 antibody may be required due to differences in protocols and secondary/substrate sensitivity.\. Western blot: 1:1000,IHC (Paraffin): 1:10-1:50,Immunofluorescence: 1:10-1:50
Restrictions:	For Research Use only
Handling	
Format:	Liquid
Buffer:	In 1X PBS, pH 7.4, with 0.09 % sodium azide
Preservative:	Sodium azide
Precaution of Use:	This product contains Sodium azide: a POISONOUS AND HAZARDOUS SUBSTANCE which should be handled by trained staff only.
Storage:	-20 °C
Storage Comment:	Aliquot the RUNX3 antibody and store frozen at -20°C or colder. Avoid repeated freeze-thaw cycles.

Images



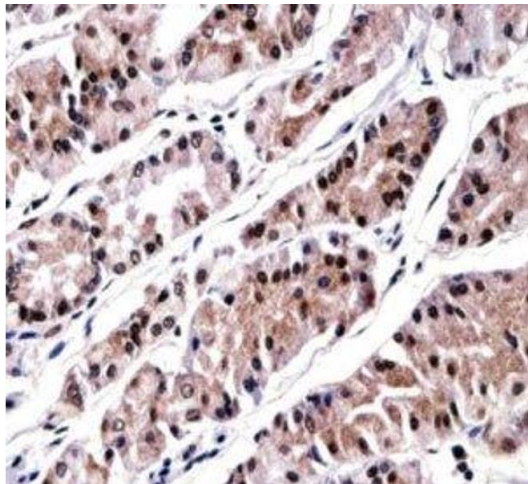
Western Blotting

Image 1. Western blot analysis of lysate from 1) HL-60 and 2) Jurkat cell line using RUNX3 antibody at 1:1000.



Immunofluorescence

Image 2. Fluorescent confocal image of HeLa cells stained with RUNX3 antibody. Alexa Fluor 488 secondary was used (green). RUNX3 immunoreactivity is localized to the nucleus and cytoplasm.



Immunohistochemistry

Image 3. RUNX3 antibody immunohistochemistry analysis in formalin fixed and paraffin embedded human stomach tissue.

Please check the [product details page](#) for more images. Overall 5 images are available for ABIN3032505.