



[Go to Product page](#)

Datasheet for ABIN3032508

## anti-RUVBL2 antibody (AA 400-430)

### 3 Images

#### Overview

Quantity:	0.4 mL
Target:	RUVBL2
Binding Specificity:	AA 400-430
Reactivity:	Human, Mouse
Host:	Rabbit
Clonality:	Polyclonal
Conjugate:	This RUVBL2 antibody is un-conjugated
Application:	Western Blotting (WB), ELISA

#### Product Details

Immunogen:	A portion of amino acids 400-430 from the human protein was used as the immunogen for this Reptin antibody.
Isotype:	Ig Fraction
Cross-Reactivity (Details):	Expected species reactivity: Bovine, Xenopus
Purification:	Purified

#### Target Details

Target:	RUVBL2
Alternative Name:	Reptin ( <a href="#">RUVBL2 Products</a> )
Background:	This gene encodes the second human homologue of the bacterial RuvB gene. Bacterial RuvB

## Target Details

---

protein is a DNA helicase essential for homologous recombination and DNA double-strand break repair. Functional analysis showed that this gene product has both ATPase and DNA helicase activities. This gene is physically linked to the CGB/LHB gene cluster on chromosome 19q13.3, and is very close (55 nt) to the LHB gene, in the opposite orientation.

UniProt: [Q9Y230](#)

Pathways: [Telomere Maintenance](#)

## Application Details

---

Application Notes: Titration of the Reptin antibody may be required due to differences in protocols and secondary/substrate sensitivity.\. Western blot: 1:1000

Restrictions: For Research Use only

## Handling

---

Format: Liquid

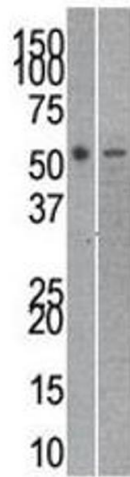
Buffer: In 1X PBS pH 7.4 with 0.09 % sodium azide

Preservative: Sodium azide

Precaution of Use: This product contains Sodium azide: a POISONOUS AND HAZARDOUS SUBSTANCE which should be handled by trained staff only.

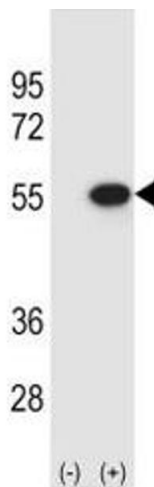
Storage: -20 °C

Storage Comment: Aliquot the Reptin antibody and store frozen at -20°C or colder. Avoid repeated freeze-thaw cycles.



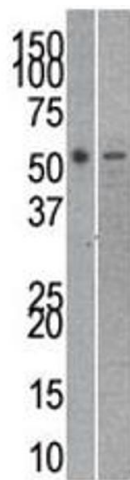
#### Western Blotting

**Image 1.** Reptin antibody used in western blot to detect RUVBL2 in mouse kidney (left) and SK-Br-3 (right) lysate



#### Western Blotting

**Image 2.** Western blot analysis of Reptin antibody and 293 cell lysate (2 ug/lane) either nontransfected (Lane 1) or transiently transfected (2) with the RUVBL2 gene.



#### Western Blotting

**Image 3.** Reptin antibody used in western blot to detect RUVBL2 in mouse kidney (left) and SK-Br-3 (right) lysate