



Datasheet for ABIN3032509
anti-S100A1 antibody (AA 45-75)



[Go to Product page](#)

3 Images

Overview

Quantity:	0.4 mL
Target:	S100A1
Binding Specificity:	AA 45-75
Reactivity:	Human
Host:	Rabbit
Clonality:	Polyclonal
Conjugate:	This S100A1 antibody is un-conjugated
Application:	Western Blotting (WB), Immunohistochemistry (IHC), ELISA

Product Details

Immunogen:	A portion of amino acids 45-75 from the human protein was used as the immunogen for this S100A1 antibody.
Isotype:	Ig Fraction
Cross-Reactivity (Details):	Expected species reactivity: Bovine
Purification:	Antigen affinity purified

Target Details

Target:	S100A1
Alternative Name:	S100A1 (S100A1 Products)
Background:	The protein encoded by this gene is a member of the S100 family of proteins containing 2 EF-

Target Details

hand calcium-binding motifs. S100 proteins are localized in the cytoplasm and/or nucleus of a wide range of cells, and involved in the regulation of a number of cellular processes such as cell cycle progression and differentiation. S100 genes include at least 13 members which are located as a cluster on chromosome 1q21. This protein may function in stimulation of Ca²⁺-induced Ca²⁺ release, inhibition of microtubule assembly, and inhibition of protein kinase C-mediated phosphorylation. Reduced expression of this protein has been implicated in cardiomyopathies.

UniProt: [P23297](#)

Pathways: [Regulation of Muscle Cell Differentiation](#), [Toll-Like Receptors Cascades](#), [S100 Proteins](#)

Application Details

Application Notes: Titration of the S100A1 antibody may be required due to differences in protocols and secondary/substrate sensitivity.\. Western blot: 1:1000,IHC (Paraffin): 1:50-1:100

Restrictions: For Research Use only

Handling

Format: Liquid

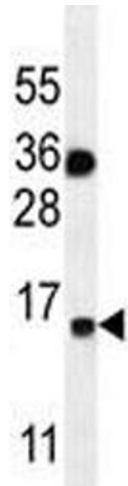
Buffer: In 1X PBS, pH 7.4, with 0.09 % sodium azide

Preservative: Sodium azide

Precaution of Use: This product contains Sodium azide: a POISONOUS AND HAZARDOUS SUBSTANCE which should be handled by trained staff only.

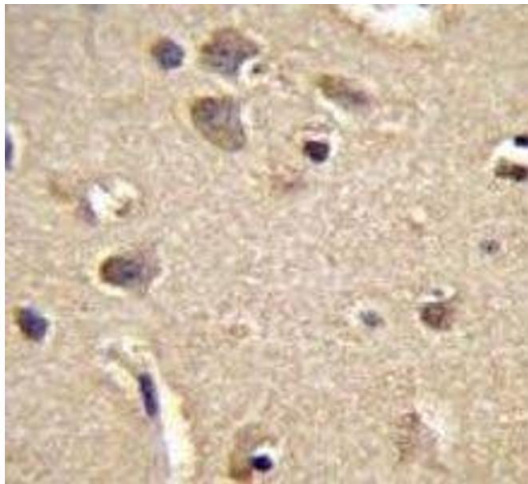
Storage: -20 °C

Storage Comment: Aliquot the S100A1 antibody and store frozen at -20°C or colder. Avoid repeated freeze-thaw cycles.



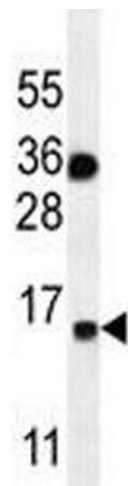
Western Blotting

Image 1. S100A1 antibody western blot analysis in MDA-MB435 lysate. Predicted molecular weight: 12-15 kDa.



Immunohistochemistry

Image 2. S100A1 antibody immunohistochemistry analysis in formalin fixed and paraffin embedded human brain tissue.



Western Blotting

Image 3. S100A1 antibody western blot analysis in MDA-MB435 lysate. Predicted molecular weight: 12-15 kDa.