

Datasheet for ABIN3032510  
**anti-S100A10 antibody (AA 12-40)**

## 5 Images

[Go to Product page](#)

## Overview

Quantity:	0.4 mL
Target:	S100A10
Binding Specificity:	AA 12-40
Reactivity:	Human
Host:	Rabbit
Clonality:	Polyclonal
Conjugate:	This S100A10 antibody is un-conjugated
Application:	Western Blotting (WB), Immunohistochemistry (IHC), ELISA, Flow Cytometry (FACS)

## Product Details

Immunogen:	A portion of amino acids 12-40 from the human protein was used as the immunogen for this S100A10 antibody.
Isotype:	Ig Fraction
Cross-Reactivity (Details):	Expected species reactivity: Bovine, Pig, Rabbit
Purification:	Antigen affinity purified

## Target Details

Target:	S100A10
Alternative Name:	S100A10 ( <a href="#">S100A10 Products</a> )
Background:	The protein encoded by this gene is a member of the S100 family of proteins containing 2 EF-

## Target Details

hand calcium-binding motifs. S100 proteins are localized in the cytoplasm and/or nucleus of a wide range of cells, and involved in the regulation of a number of cellular processes such as cell cycle progression and differentiation.

UniProt: [P60903](#)

Pathways: [S100 Proteins](#)

## Application Details

Application Notes: Titration of the S100A10 antibody may be required due to differences in protocols and secondary/substrate sensitivity.\. Western blot: 1:1000,IHC (Paraffin): 1:50-1:100,Flow Cytometry: 1:10-1:50

Restrictions: For Research Use only

## Handling

Format: Liquid

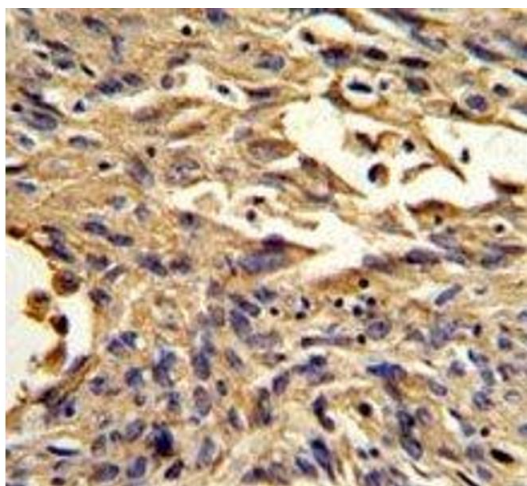
Buffer: In 1X PBS, pH 7.4, with 0.09 % sodium azide

Preservative: Sodium azide

Precaution of Use: This product contains Sodium azide: a POISONOUS AND HAZARDOUS SUBSTANCE which should be handled by trained staff only.

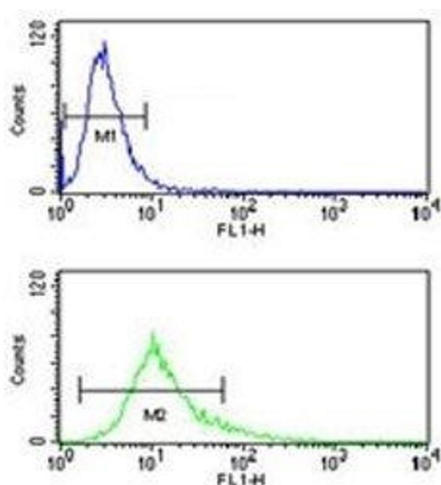
Storage: -20 °C

Storage Comment: Aliquot the S100A10 antibody and store frozen at -20°C or colder. Avoid repeated freeze-thaw cycles.



#### Immunohistochemistry

**Image 1.** IHC analysis of FFPE human lung carcinoma stained with S100A10 antibody



#### Flow Cytometry

**Image 2.** S100A10 antibody flow cytometry analysis of NCI-H460 cells (green) compared to a negative control (blue). FITC-conjugated goat-anti-rabbit secondary Ab was used for the analysis.



#### Western Blotting

**Image 3.** Western blot analysis of S100A10 antibody and NCI-H460 lysate.

Please check the [product details page](#) for more images. Overall 5 images are available for ABIN3032510.