



[Go to Product page](#)

Datasheet for ABIN3032511  
**anti-S100A11 antibody (AA 1-30)**

3 Images

Overview

Quantity:	0.4 mL
Target:	S100A11
Binding Specificity:	AA 1-30
Reactivity:	Human
Host:	Rabbit
Clonality:	Polyclonal
Conjugate:	This S100A11 antibody is un-conjugated
Application:	Western Blotting (WB), ELISA

Product Details

Immunogen:	A portion of amino acids 1-30 from the human protein was used as the immunogen for this S100A11 antibody.
Isotype:	Ig Fraction
Purification:	Antigen affinity purified

Target Details

Target:	S100A11
Alternative Name:	S100A11 ( <a href="#">S100A11 Products</a> )
Background:	S100A11 is a member of the S100 family of proteins containing 2 EF-hand calcium-binding motifs. S100 proteins are localized in the cytoplasm and/or nucleus of a wide range of cells, and involved in the regulation of a number of cellular processes such as cell cycle progression

## Target Details

and differentiation. This protein may function in motility, invasion, and tubulin polymerization. Chromosomal rearrangements and altered expression of S100A11 gene have been implicated in tumor metastasis.

UniProt: [P31949](#)

Pathways: [S100 Proteins](#)

## Application Details

Application Notes: Titration of the S100A11 antibody may be required due to differences in protocols and secondary/substrate sensitivity.\. Western blot: 1:1000

Restrictions: For Research Use only

## Handling

Format: Liquid

Buffer: In 1X PBS, pH 7.4, with 0.09 % sodium azide

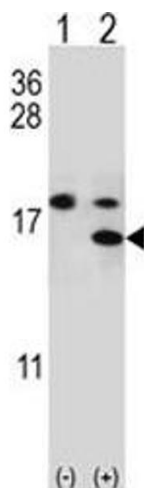
Preservative: Sodium azide

Precaution of Use: This product contains Sodium azide: a POISONOUS AND HAZARDOUS SUBSTANCE which should be handled by trained staff only.

Storage: -20 °C

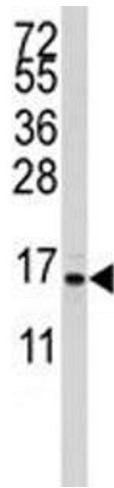
Storage Comment: Aliquot the S100A11 antibody and store frozen at -20°C or colder. Avoid repeated freeze-thaw cycles.

## Images



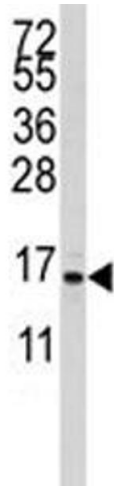
### Western Blotting

**Image 1.** Western blot analysis of S100A11 antibody and 293 cell lysate either nontransfected (Lane 1) or transiently transfected (2) with the S100A11 gene.



#### Western Blotting

**Image 2.** Western blot analysis of S100A11 antibody and CEM lysate. Predicted molecular weight 12~15 kDa.



#### Western Blotting

**Image 3.** Western blot analysis of S100A11 antibody and CEM lysate. Predicted molecular weight 12~15 kDa.