

Datasheet for ABIN3032513
anti-S100A6 antibody (AA 37-67)

5 Images

[Go to Product page](#)

Overview

Quantity:	0.4 mL
Target:	S100A6
Binding Specificity:	AA 37-67
Reactivity:	Human, Mouse
Host:	Rabbit
Clonality:	Polyclonal
Conjugate:	This S100A6 antibody is un-conjugated
Application:	Western Blotting (WB), ELISA, Flow Cytometry (FACS)

Product Details

Immunogen:	A portion of amino acids 37-67 from the human protein was used as the immunogen for this S100A6 antibody.
Isotype:	Ig Fraction
Purification:	Purified

Target Details

Target:	S100A6
Alternative Name:	S100A6 (S100A6 Products)
Background:	S100A6 is a member of the S100 family of proteins containing 2 EF-hand calcium-binding motifs. S100 proteins are localized in the cytoplasm and/or nucleus of a wide range of cells, and involved in the regulation of a number of cellular processes such as cell cycle progression

Target Details

and differentiation. This protein may function in stimulation of Ca²⁺-dependent insulin release, stimulation of prolactin secretion, and exocytosis.

UniProt: [P06703](#)

Pathways: [S100 Proteins](#)

Application Details

Application Notes: Titration of the S100A6 antibody may be required due to differences in protocols and secondary/substrate sensitivity.\. Western blot: 1:1000,Flow Cytometry: 1:10-1:50

Restrictions: For Research Use only

Handling

Format: Liquid

Buffer: In 1X PBS, pH 7.4, with 0.09 % sodium azide

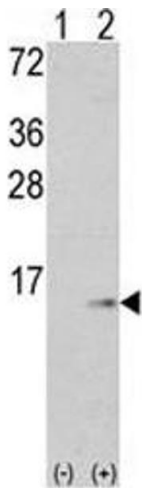
Preservative: Sodium azide

Precaution of Use: This product contains Sodium azide: a POISONOUS AND HAZARDOUS SUBSTANCE which should be handled by trained staff only.

Storage: -20 °C

Storage Comment: Aliquot the S100A6 antibody and store frozen at -20°C or colder. Avoid repeated freeze-thaw cycles.

Images



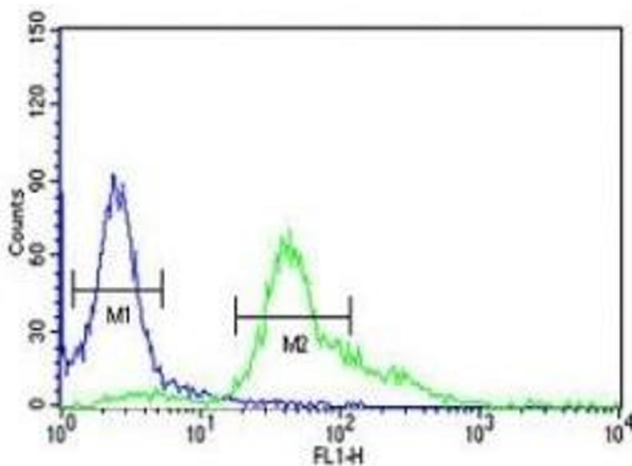
Western Blotting

Image 1. Western blot analysis of S100A6 antibody and 293 cell lysate (2 ug/lane) either nontransfected (Lane 1) or transiently transfected with the S100A6 gene (2).



Western Blotting

Image 2. Western blot analysis of S100A6 antibody and mouse lung tissue lysate.



Flow Cytometry

Image 3. S100A6 antibody flow cytometric analysis of HeLa cells (right histogram) compared to a negative control (left histogram). FITC-conjugated goat-anti-rabbit secondary Ab was used for the analysis.

Please check the [product details page](#) for more images. Overall 5 images are available for ABIN3032513.