

Datasheet for ABIN3032514
anti-S100A7 antibody (AA 2-31)



[Go to Product page](#)

3 Images

Overview

Quantity:	0.4 mL
Target:	S100A7
Binding Specificity:	AA 2-31
Reactivity:	Human
Host:	Rabbit
Clonality:	Polyclonal
Conjugate:	This S100A7 antibody is un-conjugated
Application:	Western Blotting (WB), Immunohistochemistry (IHC), ELISA

Product Details

Immunogen:	A portion of amino acids 2-31 from the human protein was used as the immunogen for this S100A7 antibody.
Isotype:	Ig Fraction
Purification:	Antigen affinity purified

Target Details

Target:	S100A7
Alternative Name:	S100A7 (S100A7 Products)
Background:	The protein encoded by this gene is a member of the S100 family of proteins containing 2 EF-hand calcium-binding motifs. S100 proteins are localized in the cytoplasm and/or nucleus of a wide range of cells, and involved in the regulation of a number of cellular processes such as cell

Target Details

cycle progression and differentiation. S100 genes include at least 13 members which are located as a cluster on chromosome 1q21. This protein differs from the other S100 proteins of known structure in its lack of calcium binding ability in one EF-hand at the N-terminus. This protein is markedly over-expressed in the skin lesions of psoriatic patients, but is excluded as a candidate gene for familial psoriasis susceptibility. The exact function of this protein is not known.

UniProt: [P31151](#)

Pathways: [S100 Proteins](#)

Application Details

Application Notes: Titration of the S100A7 antibody may be required due to differences in protocols and secondary/substrate sensitivity.\. Western blot: 1:1000,IHC (Paraffin): 1:10-1:50

Restrictions: For Research Use only

Handling

Format: Liquid

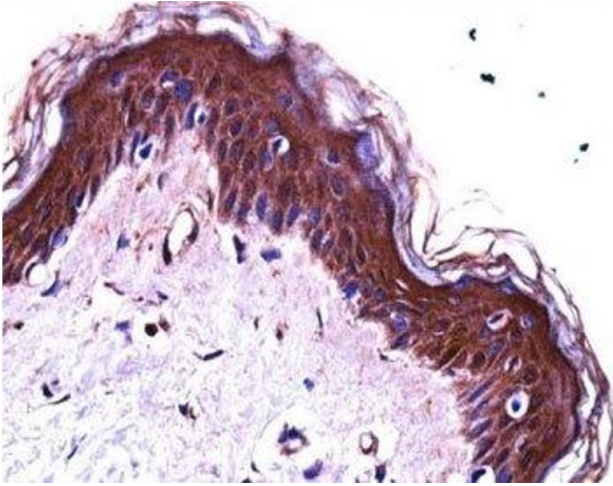
Buffer: In 1X PBS, pH 7.4, with 0.09 % sodium azide

Preservative: Sodium azide

Precaution of Use: This product contains Sodium azide: a POISONOUS AND HAZARDOUS SUBSTANCE which should be handled by trained staff only.

Storage: -20 °C

Storage Comment: Aliquot the S100A7 antibody and store frozen at -20°C or colder. Avoid repeated freeze-thaw cycles.



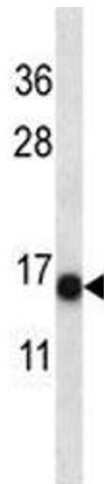
Immunohistochemistry

Image 1. S100A7 antibody immunohistochemistry analysis in formalin fixed and paraffin embedded human skin tissue.



Western Blotting

Image 2. S100A7 antibody western blot analysis in NCI-H292 lysate.



Western Blotting

Image 3. S100A7 antibody western blot analysis in NCI-H292 lysate.