

Datasheet for ABIN3032516

**anti-S100B antibody****5** Images[Go to Product page](#)

## Overview

Quantity:	0.4 mL
Target:	S100B
Reactivity:	Human, Mouse
Host:	Rabbit
Clonality:	Polyclonal
Conjugate:	This S100B antibody is un-conjugated
Application:	Western Blotting (WB), Immunohistochemistry (IHC), Flow Cytometry (FACS), ELISA

## Product Details

Immunogen:	This S100B antibody was produced from rabbits immunized with S100B recombinant protein.
Isotype:	Ig Fraction
Cross-Reactivity (Details):	Expected species reactivity: Rabbit
Purification:	Antigen affinity purified

## Target Details

Target:	S100B
Alternative Name:	S100B ( <a href="#">S100B Products</a> )
Background:	S100B is a member of the S100 family of proteins containing 2 EF-hand calcium-binding motifs. S100 proteins are localized in the cytoplasm and/or nucleus of a wide range of cells, and involved in the regulation of a number of cellular processes such as cell cycle progression and differentiation. S100 genes include at least 13 members which are located as a cluster on

## Target Details

chromosome 1q21, however, this gene is located at 21q22.3. This protein may function in Neurite extension, proliferation of melanoma cells, stimulation of Ca<sup>2+</sup> fluxes, inhibition of PKC-mediated phosphorylation, astrocytosis and axonal proliferation, and inhibition of microtubule assembly. Chromosomal rearrangements and altered expression of this gene have been implicated in several neurological, neoplastic, and other types of diseases, including Alzheimer's disease, Down's syndrome, epilepsy, amyotrophic lateral sclerosis, melanoma, and type I diabetes.

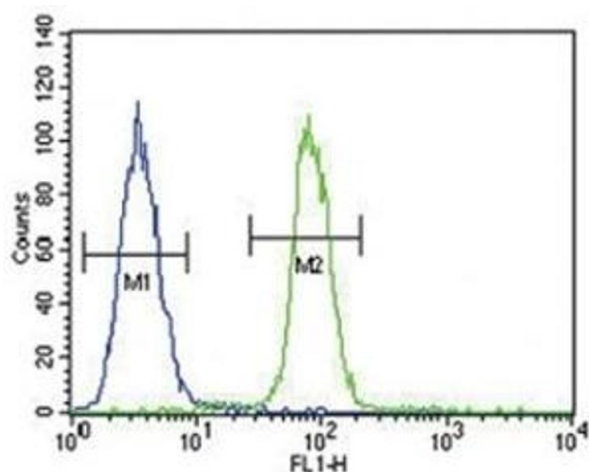
UniProt:	<a href="#">P04271</a>
Pathways:	<a href="#">Regulation of Muscle Cell Differentiation</a> , <a href="#">Positive Regulation of Immune Effector Process</a> , <a href="#">Toll-Like Receptors Cascades</a> , <a href="#">Regulation of long-term Neuronal Synaptic Plasticity</a> , <a href="#">S100 Proteins</a>

## Application Details

Application Notes:	Titration of the S100B antibody may be required due to differences in protocols and secondary/substrate sensitivity.\. Western blot: 1:1000,IHC (Paraffin): 1:10-1:50,Flow Cytometry: 1:10-1:50
Restrictions:	For Research Use only

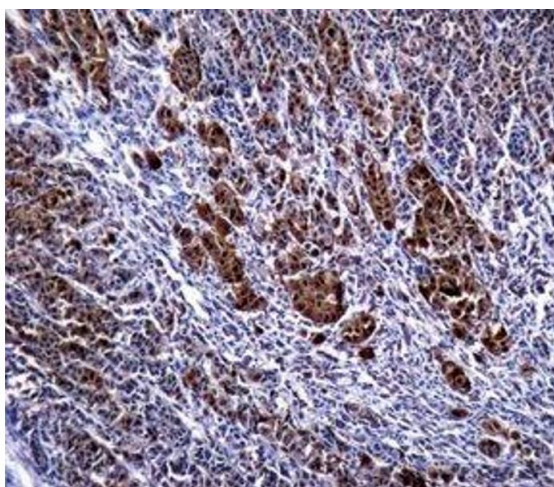
## Handling

Format:	Liquid
Buffer:	In 1X PBS, pH 7.4, with 0.09 % sodium azide
Preservative:	Sodium azide
Precaution of Use:	This product contains Sodium azide: a POISONOUS AND HAZARDOUS SUBSTANCE which should be handled by trained staff only.
Storage:	-20 °C
Storage Comment:	Aliquot the S100B antibody and store frozen at -20°C or colder. Avoid repeated freeze-thaw cycles.



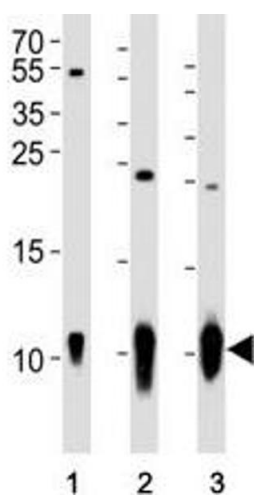
### Flow Cytometry

**Image 1.** S100B antibody flow cytometric analysis of A375 cells (right histogram) compared to a negative control (left histogram). FITC-conjugated goat-anti-rabbit secondary Ab was used for the analysis.



### Immunohistochemistry

**Image 2.** S100B antibody immunohistochemistry analysis in formalin fixed and paraffin embedded human malignant melanoma.



### Western Blotting

**Image 3.** Western blot analysis of lysate from (1) A431 cell line, (2) mouse brain and (3) rat brain tissue using S100B antibody at 1:1000. Predicted size: 11 kDa with a 21 kDa homodimer

Please check the [product details page](#) for more images. Overall 5 images are available for ABIN3032516.