

Datasheet for ABIN3032518  
**anti-SATB2 antibody (AA 410-439)**[Go to Product page](#)

## 2 Images

## Overview

Quantity:	0.4 mL
Target:	SATB2
Binding Specificity:	AA 410-439
Reactivity:	Human
Host:	Rabbit
Clonality:	Polyclonal
Conjugate:	This SATB2 antibody is un-conjugated
Application:	Western Blotting (WB), ELISA

## Product Details

Immunogen:	A portion of amino acids 410-439 from the human protein was used as the immunogen for this SATB2 antibody.
Isotype:	Ig Fraction
Cross-Reactivity (Details):	Expected species reactivity: Mouse
Purification:	Antigen affinity purified

## Target Details

Target:	SATB2
Alternative Name:	SATB2 ( <a href="#">SATB2 Products</a> )
Background:	This gene encodes a DNA binding protein that specifically binds nuclear matrix attachment

## Target Details

regions. The encoded protein is involved in transcription regulation and chromatin remodeling. Defects in this gene are associated with isolated cleft palate and mental retardation. Alternate splicing results in multiple transcript variants that encode the same protein. [provided by RefSeq].

UniProt: [Q9UPW6](#)

## Application Details

Application Notes: Titration of the SATB2 antibody may be required due to differences in protocols and secondary/substrate sensitivity.\. Western blot: 1:1000

Restrictions: For Research Use only

## Handling

Format: Liquid

Buffer: In 1X PBS, pH 7.4, with 0.09 % sodium azide

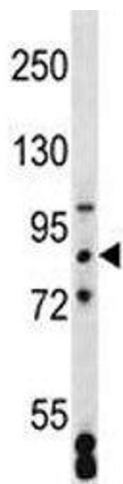
Preservative: Sodium azide

Precaution of Use: This product contains Sodium azide: a POISONOUS AND HAZARDOUS SUBSTANCE which should be handled by trained staff only.

Storage: -20 °C

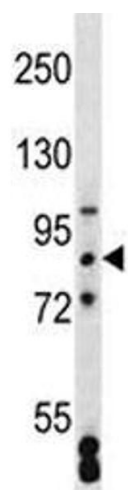
Storage Comment: Aliquot the SATB2 antibody and store frozen at -20°C or colder. Avoid repeated freeze-thaw cycles.

## Images



### Western Blotting

**Image 1.** SATB2 antibody western blot analysis in MCF-7 lysate



Western Blotting

**Image 2.** SATB2 antibody western blot analysis in MCF-7 lysate