

Datasheet for ABIN3032521
anti-Osteopontin antibody (AA 14-40)

5 Images

[Go to Product page](#)

Overview

Quantity:	0.4 mL
Target:	Osteopontin (SPP1)
Binding Specificity:	AA 14-40
Reactivity:	Human
Host:	Rabbit
Clonality:	Polyclonal
Conjugate:	This Osteopontin antibody is un-conjugated
Application:	Western Blotting (WB), ELISA, Immunohistochemistry (IHC), Immunofluorescence (IF)

Product Details

Immunogen:	A portion of amino acids 14-40 from the human protein was used as the immunogen for this Osteopontin antibody.
Isotype:	Ig Fraction
Purification:	Antigen affinity purified

Target Details

Target:	Osteopontin (SPP1)
Alternative Name:	Osteopontin (SPP1 Products)
Background:	Binds tightly to hydroxyapatite. Appears to form an integral part of the mineralized matrix. Probably important to cell-matrix interaction. Acts as a cytokine involved in enhancing production of interferon-gamma and interleukin-12 and reducing production of interleukin-10

Target Details

and is essential in the pathway that leads to type I immunity (By similarity).

UniProt: [P10451](#)

Pathways: [Regulation of Cell Size](#)

Application Details

Application Notes: Titration of the Osteopontin antibody may be required due to differences in protocols and secondary/substrate sensitivity.\. Western blot: 1:1000,IHC (Paraffin): 1:50-1:100,Immunofluorescence: 1:10-1:50

Restrictions: For Research Use only

Handling

Format: Liquid

Buffer: In 1X PBS, pH 7.4, with 0.09 % sodium azide

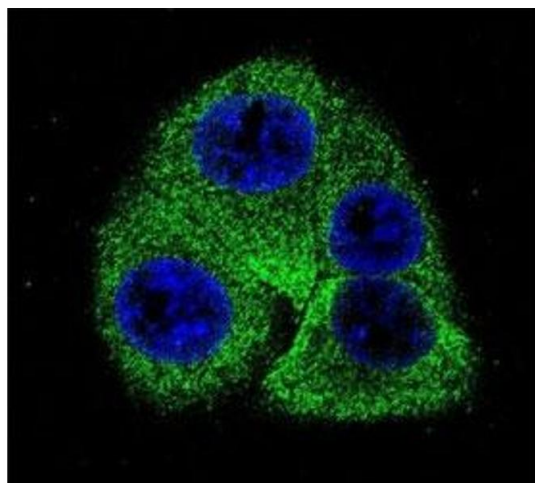
Preservative: Sodium azide

Precaution of Use: This product contains Sodium azide: a POISONOUS AND HAZARDOUS SUBSTANCE which should be handled by trained staff only.

Storage: -20 °C

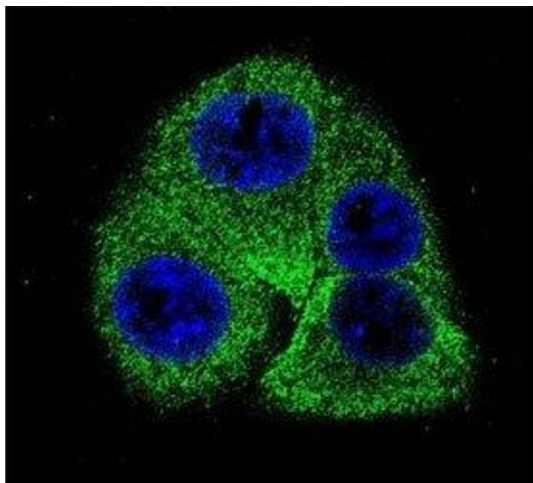
Storage Comment: Aliquot the Osteopontin antibody and store frozen at -20°C or colder. Avoid repeated freeze-thaw cycles.

Images



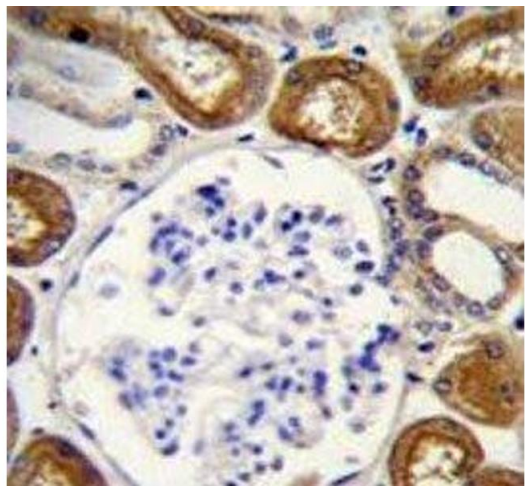
Immunofluorescence

Image 1. Confocal immunofluorescent analysis of Osteopontin antibody with 293 cells followed by Alexa Fluor 488-conjugated goat anti-rabbit IgG (green). DAPI was used as a nuclear counterstain (blue).



Immunofluorescence

Image 2. Confocal immunofluorescent analysis of Osteopontin antibody with 293 cells followed by Alexa Fluor 488-conjugated goat anti-rabbit IgG (green). DAPI was used as a nuclear counterstain (blue).



Immunohistochemistry

Image 3. Osteopontin antibody immunohistochemistry analysis in formalin fixed and paraffin embedded human kidney tissue.

Please check the [product details page](#) for more images. Overall 5 images are available for ABIN3032521.