

Datasheet for ABIN3032527
anti-Selectin E/CD62e antibody



[Go to Product page](#)

2 Images

Overview

Quantity:	0.4 mL
Target:	Selectin E/CD62e (SELE)
Reactivity:	Human
Host:	Rabbit
Clonality:	Polyclonal
Conjugate:	This Selectin E/CD62e antibody is un-conjugated
Application:	Western Blotting (WB), ELISA

Product Details

Immunogen:	This E-Selectin antibody was produced from rabbits immunized with a human partial recombinant protein.
Isotype:	Ig Fraction
Purification:	Antigen affinity purified

Target Details

Target:	Selectin E/CD62e (SELE)
Alternative Name:	E-Selectin (SELE Products)
Background:	The protein encoded by this gene is found in cytokine-stimulated endothelial cells and is thought to be responsible for the accumulation of blood leukocytes at sites of inflammation by mediating the adhesion of cells to the vascular lining. It exhibits structural features such as the presence of lectin- and EGF-like domains followed by short consensus repeat (SCR) domains

Target Details

that contain 6 conserved cysteine residues. These proteins are part of the selectin family of cell adhesion molecules. Adhesion molecules participate in the interaction between leukocytes and the endothelium and appear to be involved in the pathogenesis of atherosclerosis.

UniProt:	P16581
Pathways:	Thromboxane A2 Receptor Signaling

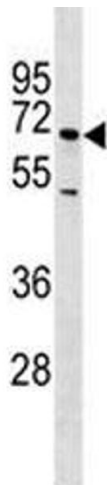
Application Details

Application Notes:	Titration of the E-Selectin antibody may be required due to differences in protocols and secondary/substrate sensitivity.\. Western blot: 1:1000
Restrictions:	For Research Use only

Handling

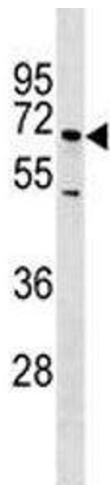
Format:	Liquid
Buffer:	In 1X PBS, pH 7.4, with 0.09 % sodium azide
Preservative:	Sodium azide
Precaution of Use:	This product contains Sodium azide: a POISONOUS AND HAZARDOUS SUBSTANCE which should be handled by trained staff only.
Storage:	-20 °C
Storage Comment:	Aliquot the E-Selectin antibody and store frozen at -20°C or colder. Avoid repeated freeze-thaw cycles.

Images



Western Blotting

Image 1. E-Selectin antibody western blot analysis in NCI-H460 lysate. Predicted molecular weight: 64-115 kDa depending on glycosylation level.



Western Blotting

Image 2. E-Selectin antibody western blot analysis in NCI-H460 lysate. Predicted molecular weight: 64-115 kDa depending on glycosylation level.