

Datasheet for ABIN3032541
anti-LKB1 antibody (AA 19-48)

5 Images

[Go to Product page](#)

Overview

Quantity:	0.4 mL
Target:	LKB1 (STK11)
Binding Specificity:	AA 19-48
Reactivity:	Human
Host:	Rabbit
Clonality:	Polyclonal
Conjugate:	This LKB1 antibody is un-conjugated
Application:	Western Blotting (WB), ELISA, Immunofluorescence (IF), Flow Cytometry (FACS)

Product Details

Immunogen:	A portion of amino acids 19-48 from the human protein was used as the immunogen for this LKB1 antibody.
Isotype:	Ig Fraction
Cross-Reactivity (Details):	Expected species reactivity: Mouse, Rat, Chicken
Purification:	Purified

Target Details

Target:	LKB1 (STK11)
Alternative Name:	LKB1 (STK11 Products)
Background:	LKB1 is a tumor suppressor serine/threonine-protein kinase that controls the activity of AMP-

Target Details

activated protein kinase (AMPK) family members, thereby playing a role in various processes such as cell metabolism, cell polarity, apoptosis and DNA damage response. Acts as a key upstream regulator of AMPK by mediating phosphorylation and activation of AMPK catalytic subunits PRKAA1 and PRKAA2 and thereby regulates processes including: inhibition of signaling pathways that promote cell growth and proliferation when energy levels are low, glucose homeostasis in liver, activation of autophagy when cells undergo nutrient deprivation, and B-cell differentiation in the germinal center in response to DNA damage. [UniProt]

UniProt: [Q15831](#)

Pathways: [AMPK Signaling](#), [Carbohydrate Homeostasis](#), [Regulation of Carbohydrate Metabolic Process](#), [Warburg Effect](#)

Application Details

Application Notes: Titration of the LKB1 antibody may be required due to differences in protocols and secondary/substrate sensitivity.\. Western blot: 1:1000,Flow Cytometry: 1:10-1:50,Immunofluorescence: 1:10-1:50

Restrictions: For Research Use only

Handling

Format: Liquid

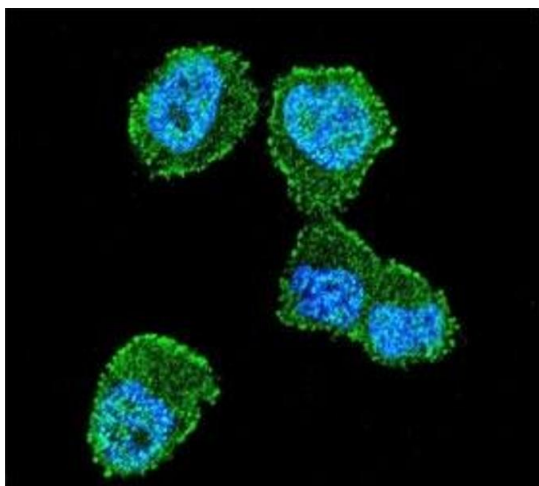
Buffer: In 1X PBS, pH 7.4, with 0.09 % sodium azide

Preservative: Sodium azide

Precaution of Use: This product contains Sodium azide: a POISONOUS AND HAZARDOUS SUBSTANCE which should be handled by trained staff only.

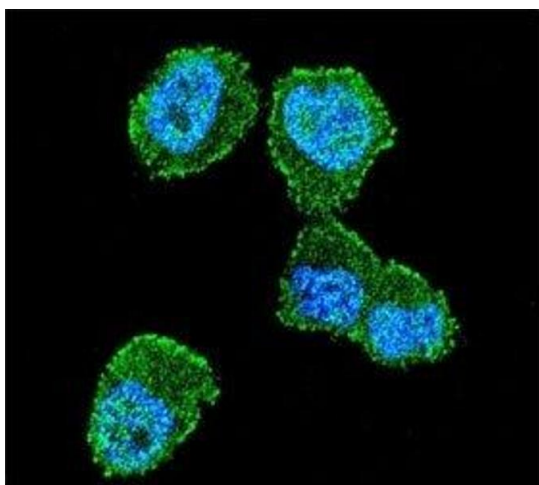
Storage: -20 °C

Storage Comment: Aliquot the LKB1 antibody and store frozen at -20°C or colder. Avoid repeated freeze-thaw cycles.



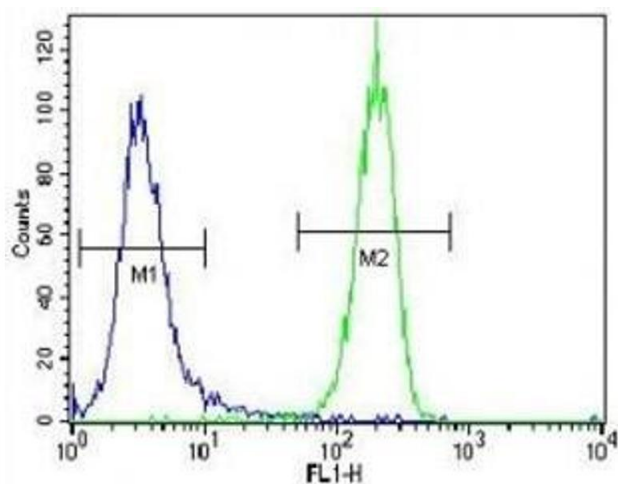
Immunofluorescence

Image 1. Confocal immunofluorescent analysis of LKB1 antibody with ZR-75-1 cells followed by Alexa Fluor 488-conjugated goat anti-rabbit IgG (green). DAPI was used as a nuclear counterstain (blue).



Immunofluorescence

Image 2. Confocal immunofluorescent analysis of LKB1 antibody with ZR-75-1 cells followed by Alexa Fluor 488-conjugated goat anti-rabbit IgG (green). DAPI was used as a nuclear counterstain (blue).



Flow Cytometry

Image 3. LKB1 antibody flow cytometric analysis of NCI-H460 cells (right histogram) compared to a negative control (left histogram). FITC-conjugated goat-anti-rabbit secondary Ab was used for the analysis.

Please check the [product details page](#) for more images. Overall 5 images are available for ABIN3032541.