

Datasheet for ABIN3032543  
**anti-STYK1 antibody (AA 31-64)**[Go to Product page](#)

## 2 Images

## Overview

Quantity:	0.4 mL
Target:	STYK1
Binding Specificity:	AA 31-64
Reactivity:	Human, Mouse
Host:	Rabbit
Clonality:	Polyclonal
Conjugate:	This STYK1 antibody is un-conjugated
Application:	Western Blotting (WB), ELISA

## Product Details

Immunogen:	A portion of amino acids 31-64 from the human protein was used as the immunogen for this STYK1 antibody.
Isotype:	Ig Fraction
Purification:	Purified

## Target Details

Target:	STYK1
Alternative Name:	STYK1 ( <a href="#">STYK1 Products</a> )
Background:	STYK1, a probable tyrosine protein-kinase, which has strong transforming capabilities on a variety of cell lines. When overexpressed, it can also induce tumor cell invasion as well as metastasis in distant organs. May act by activating both MAP kinase and phosphatidylinositol

## Target Details

3'-kinases (PI3K) pathways. It is widely expressed, highly expressed in brain, placenta and prostate. STYK1 is expressed in tumor cells such as hepatoma cells LO2, cervix carcinoma cells HeLa, ovary cancer cells Ho8910 and chronic myelogenous leukemia cells K562, but not in other tumor cells such as epidermoid carcinoma.

UniProt: [Q6J9G0](#)

## Application Details

Application Notes: Titration of the STYK1 antibody may be required due to differences in protocols and secondary/substrate sensitivity.\. Western blot: 1:1000

Restrictions: For Research Use only

## Handling

Format: Liquid

Buffer: In 1X PBS pH 7.4 with 0.09 % sodium azide

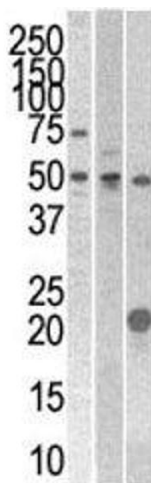
Preservative: Sodium azide

Precaution of Use: This product contains Sodium azide: a POISONOUS AND HAZARDOUS SUBSTANCE which should be handled by trained staff only.

Storage: -20 °C

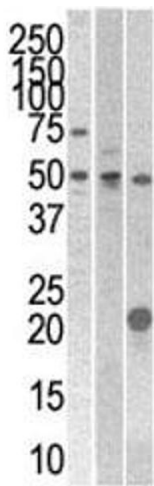
Storage Comment: Aliquot the STYK1 antibody and store frozen at -20°C or colder. Avoid repeated freeze-thaw cycles.

## Images



### Western Blotting

**Image 1.** STYK1 antibody western blot analysis with 293, CEM, and mouse kidney cell line/tissue lysate



Western Blotting

**Image 2.** STYK1 antibody western blot analysis with 293, CEM, and mouse kidney cell line/tissue lysate