

Datasheet for ABIN3032551
anti-SETD8 antibody (N-Term)

5 Images

[Go to Product page](#)

Overview

Quantity:	0.4 mL
Target:	SETD8
Binding Specificity:	N-Term
Reactivity:	Human, Mouse
Host:	Mouse
Clonality:	Monoclonal
Conjugate:	This SETD8 antibody is un-conjugated
Application:	Western Blotting (WB), ELISA, Immunohistochemistry (IHC), Immunofluorescence (IF)

Product Details

Immunogen:	This SET07 antibody was raised using purified recombinant GST fusion protein encoding the N-terminal region of human SET07.
Clone:	43AT551-86
Isotype:	IgG1
Purification:	Purified

Target Details

Target:	SETD8
Alternative Name:	SET07 (SETD8 Products)
Background:	SET07 is a protein-lysine N-methyltransferase that monomethylates both histones and non-

Target Details

histone proteins. Specifically monomethylates 'Lys-20' of histone H4 (H4K20me1). H4K20me1 is enriched during mitosis and represents a specific tag for epigenetic transcriptional repression. Mainly functions in euchromatin regions, thereby playing a central role in the silencing of euchromatic genes. Required for cell proliferation, probably by contributing to the maintenance of proper higher-order structure of DNA during mitosis. Involved in chromosome condensation and proper cytokinesis. Nucleosomes are preferred as substrate compared to free histones. Mediates monomethylation of p53/TP53 at 'Lys-382', leading to repress p53/TP53-target genes. Plays a negative role in TGF-beta response regulation and a positive role in cell migration. [UniProt]

UniProt: [Q9NQR1](#)

Application Details

Application Notes: Titration of the SET07 antibody may be required due to differences in protocols and secondary/substrate sensitivity.\. Western blot: 1:1000,IHC (Paraffin): 1:10-1:50,Immunofluorescence: 1:10-1:50

Restrictions: For Research Use only

Handling

Format: Liquid

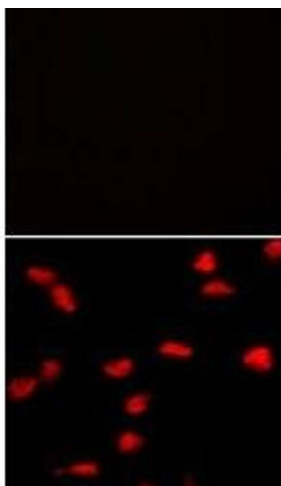
Buffer: In 1X PBS pH 7.4 with 0.09 % sodium azide

Preservative: Sodium azide

Precaution of Use: This product contains Sodium azide: a POISONOUS AND HAZARDOUS SUBSTANCE which should be handled by trained staff only.

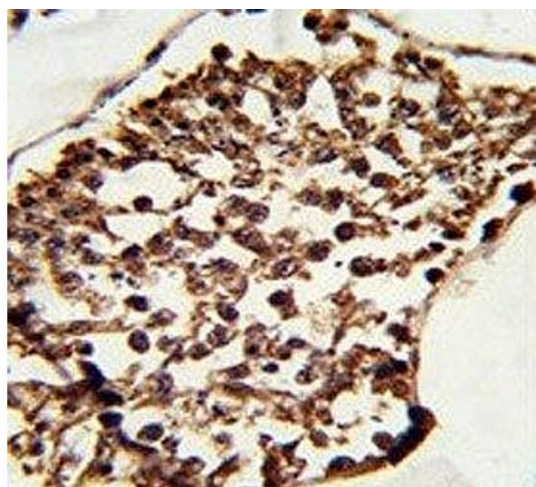
Storage: -20 °C

Storage Comment: Aliquot the SET07 antibody and store frozen at -20°C or colder. Avoid repeated freeze-thaw cycles.



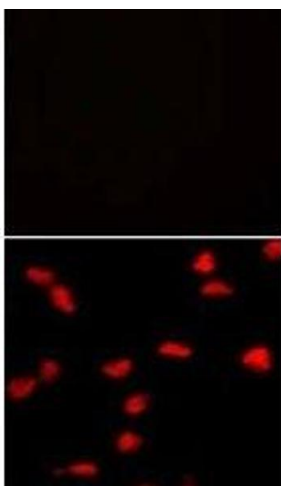
Immunofluorescence

Image 1. Immunofluorescence analysis of SET07 antibody and HeLa cells with (bottom) and without (top) PE-conjugated goat anti-mouse IgG secondary.



Immunohistochemistry

Image 2. IHC analysis of FFPE human testis tissue stained with SET07 antibody



Immunofluorescence

Image 3. Immunofluorescence analysis of SET07 antibody and HeLa cells with (bottom) and without (top) PE-conjugated goat anti-mouse IgG secondary.

Please check the [product details page](#) for more images. Overall 5 images are available for ABIN3032551.