

Datasheet for ABIN3032553
anti-SETDB1 antibody (AA 1193-1225)[Go to Product page](#)

3 Images

Overview

Quantity:	0.4 mL
Target:	SETDB1
Binding Specificity:	AA 1193-1225
Reactivity:	Human
Host:	Rabbit
Clonality:	Polyclonal
Conjugate:	This SETDB1 antibody is un-conjugated
Application:	Western Blotting (WB), ELISA

Product Details

Immunogen:	A portion of amino acids 1193-1225 from the human protein was used as the immunogen for this SETDB1 antibody.
Isotype:	Ig Fraction
Cross-Reactivity (Details):	Expected species reactivity: Mouse, Zebrafish, Xenopus
Purification:	Purified

Target Details

Target:	SETDB1
Alternative Name:	SETDB1 (SETDB1 Products)
Background:	The SET domain is a highly conserved, approximately 150-amino acid motif implicated in the

Target Details

modulation of chromatin structure. It was originally identified as part of a larger conserved region present in the Drosophila Trithorax protein and was subsequently identified in the Drosophila Su(var)3-9 and 'Enhancer of zeste' proteins, from which the acronym SET is derived. Studies have suggested that the SET domain may be a signature of proteins that modulate transcriptionally active or repressed chromatin states through chromatin remodeling activities.

UniProt: [Q15047](#)

Application Details

Application Notes: Titration of the SETDB1 antibody may be required due to differences in protocols and secondary/substrate sensitivity.\. Western blot: 1:1000

Restrictions: For Research Use only

Handling

Format: Liquid

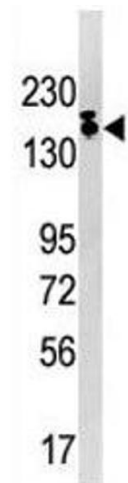
Buffer: In 1X PBS, pH 7.4, with 0.09 % sodium azide

Preservative: Sodium azide

Precaution of Use: This product contains Sodium azide: a POISONOUS AND HAZARDOUS SUBSTANCE which should be handled by trained staff only.

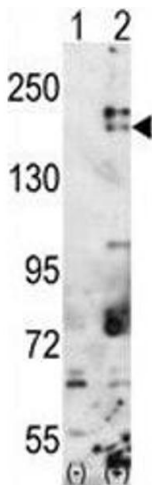
Storage: -20 °C

Storage Comment: Aliquot the SETDB1 antibody and store frozen at -20°C or colder. Avoid repeated freeze-thaw cycles.



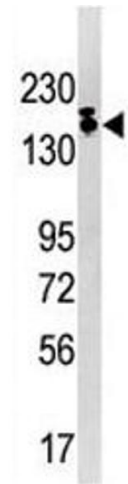
Western Blotting

Image 1. Western blot analysis of SETDB1 antibody and Ramos lysate.



Western Blotting

Image 2. Western blot analysis of SETDB1 antibody and 293 cell lysate either nontransfected (Lane 1) or transiently transfected with the SETDB1 gene (2).



Western Blotting

Image 3. Western blot analysis of SETDB1 antibody and Ramos lysate.