

Datasheet for ABIN3032556
anti-SIGLEC7 antibody (AA 1-30)[Go to Product page](#)

3 Images

Overview

Quantity:	0.4 mL
Target:	SIGLEC7
Binding Specificity:	AA 1-30
Reactivity:	Human
Host:	Rabbit
Clonality:	Polyclonal
Conjugate:	This SIGLEC7 antibody is un-conjugated
Application:	Western Blotting (WB), ELISA, Immunohistochemistry (IHC)

Product Details

Immunogen:	A portion of amino acids 1-30 from the human protein was used as the immunogen for this SIGLEC7 antibody.
Isotype:	Ig Fraction
Purification:	Antigen affinity purified

Target Details

Target:	SIGLEC7
Alternative Name:	SIGLEC7 (SIGLEC7 Products)
Background:	SIGLECs are cell surface proteins of the Ig superfamily. Most SIGLECs have 1 or more cytoplasmic immune receptor tyrosine-based inhibitory motifs, or ITIMs. A large subgroup of SIGLECs share high homology with SIGLEC3 (CD33) and are localized to 19q13.4. The cDNA for

Target Details

the SLG gene encodes 2 variants, SLG-long (SLGL) and SLG-short (SLGS). The 595-amino acid SLGL protein contains a signal peptide and 2 V-set N-terminal Ig-like domains. The 477-amino acid SLGS protein has a weak signal sequence and, like most SIGLEC3-like SIGLECs, has only 1 V-set N-terminal Ig-like domain. Both variants contain 2 C2-set N-terminal Ig-like domains, a transmembrane domain, and a cytoplasmic tail with a putative ITIM and a putative SLAM-like tyrosine-based motif. The conserved arginine residue thought to be essential for sialic acid binding in other SIGLECs is replaced by a glutamine in SLGS and by a cysteine in SLGL. RT-PCR analysis detected high expression of both variants in spleen and small intestine, and SLGS was highly expressed in adrenal gland and SLGL was highly expressed in bone marrow.

UniProt: [Q9Y286](#)

Application Details

Application Notes: Titration of the SIGLEC7 antibody may be required due to differences in protocols and secondary/substrate sensitivity.\. Western blot: 1:1000,IHC (Paraffin): 1:50-1:100

Restrictions: For Research Use only

Handling

Format: Liquid

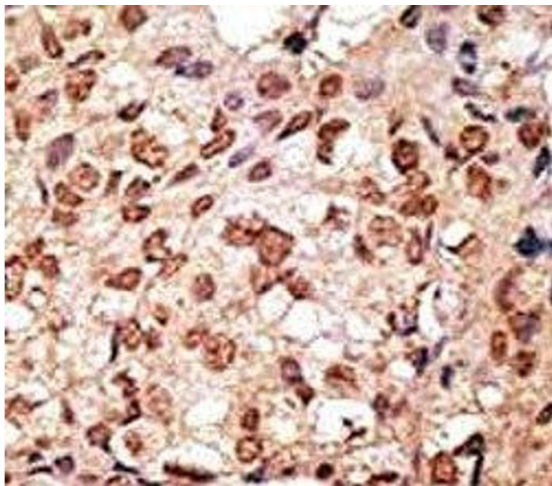
Buffer: In 1X PBS pH 7.4 with 0.09 % sodium azide

Preservative: Sodium azide

Precaution of Use: This product contains Sodium azide: a POISONOUS AND HAZARDOUS SUBSTANCE which should be handled by trained staff only.

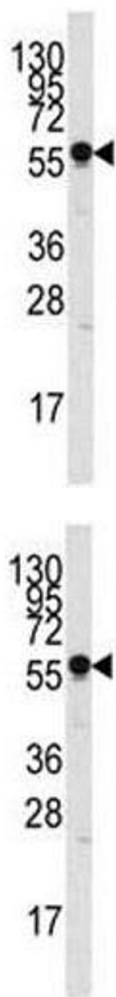
Storage: -20 °C

Storage Comment: Aliquot the SIGLEC7 antibody and store frozen at -20°C or colder. Avoid repeated freeze-thaw cycles.



Immunohistochemistry

Image 1. IHC analysis of FFPE human breast carcinoma stained with the SIGLEC7 antibody



Western Blotting

Image 2. Western blot analysis of SIGLEC7 antibody and NCI-H460 lysate.

Western Blotting

Image 3. Western blot analysis of SIGLEC7 antibody and NCI-H460 lysate.