

Datasheet for ABIN3032557
anti-SIGLEC7 antibody (AA 407-438)[Go to Product page](#)

3 Images

Overview

Quantity:	0.4 mL
Target:	SIGLEC7
Binding Specificity:	AA 407-438
Reactivity:	Human
Host:	Rabbit
Clonality:	Polyclonal
Conjugate:	This SIGLEC7 antibody is un-conjugated
Application:	Western Blotting (WB), ELISA, Immunohistochemistry (IHC)

Product Details

Immunogen:	A portion of amino acids 407-438 from the human protein was used as the immunogen for this SIGLEC7 antibody.
Isotype:	Ig Fraction
Purification:	Antigen affinity purified

Target Details

Target:	SIGLEC7
Alternative Name:	SIGLEC7 (SIGLEC7 Products)
Background:	SIGLECs are cell surface proteins of the Ig superfamily. SIGLEC7 is a putative adhesion molecule that mediates sialic-acid dependent binding to cells. Preferentially binds to alpha-2,3- and alpha-2,6-linked sialic acid. Also binds disialogangliosides (disialogalactosyl globoside,

Target Details

disialyl lactotetraosylceramide and disialyl GalNAc lactotetraosylceramide). The sialic acid recognition site may be masked by cis interactions with sialic acids on the same cell surface. In the immune response, may act as an inhibitory receptor upon ligand induced tyrosine phosphorylation by recruiting cytoplasmic phosphatase(s) via their SH2 domain(s) that block signal transduction through dephosphorylation of signaling molecules. Mediates inhibition of natural killer cells cytotoxicity. May play a role in hemopoiesis. Inhibits differentiation of CD34+ cell precursors towards myelomonocytic cell lineage and proliferation of leukemic myeloid cells (in vitro). [UniProt]

UniProt: [Q9Y286](#)

Application Details

Application Notes: The stated application concentrations are suggested starting amounts. Titration of the SIGLEC7 antibody may be required due to differences in protocols and secondary/substrate sensitivity.\. Western blot: 1:1000,IHC (Paraffin): 1:50-1:100

Restrictions: For Research Use only

Handling

Format: Liquid

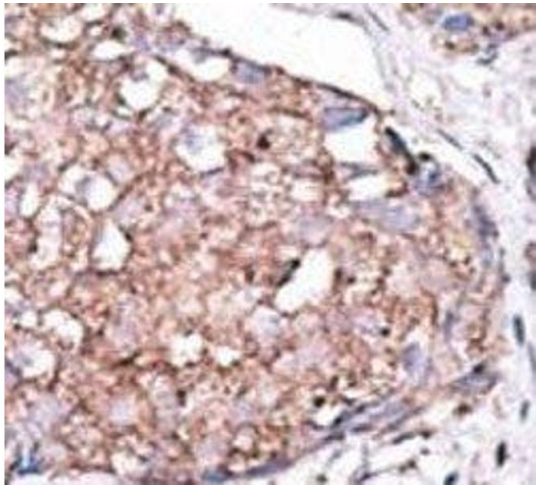
Buffer: In 1X PBS pH 7.4 with 0.09 % sodium azide

Preservative: Sodium azide

Precaution of Use: This product contains Sodium azide: a POISONOUS AND HAZARDOUS SUBSTANCE which should be handled by trained staff only.

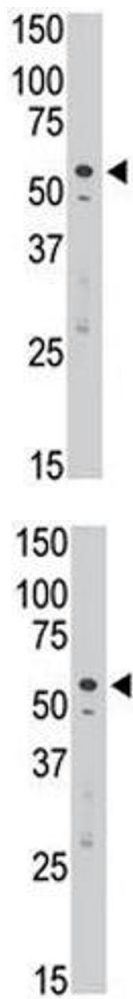
Storage: -20 °C

Storage Comment: Aliquot the SIGLEC7 antibody and store frozen at -20°C or colder. Avoid repeated freeze-thaw cycles.



Immunohistochemistry

Image 1. IHC analysis of FFPE human hepatocarcinoma stained with the SIGLEC7 antibody



Western Blotting

Image 2. SIGLEC7 antibody used in western blot to detect Dsiglec/SIGLEC7 in Jurkat cell lysate

Western Blotting

Image 3. SIGLEC7 antibody used in western blot to detect Dsiglec/SIGLEC7 in Jurkat cell lysate