

Datasheet for ABIN3032559
anti-NEU1 antibody (AA 11-40)

5 Images

[Go to Product page](#)

Overview

Quantity:	0.4 mL
Target:	NEU1
Binding Specificity:	AA 11-40
Reactivity:	Human
Host:	Rabbit
Clonality:	Polyclonal
Conjugate:	This NEU1 antibody is un-conjugated
Application:	Western Blotting (WB), Immunohistochemistry (IHC), ELISA, Flow Cytometry (FACS)

Product Details

Immunogen:	A portion of amino acids 11-40 from the human protein was used as the immunogen for this NEU1 antibody.
Isotype:	Ig Fraction
Purification:	Purified

Target Details

Target:	NEU1
Alternative Name:	NEU1 (NEU1 Products)
Background:	There are two proteins encoded by this gene, oxytocin and neurophysin I. Oxytocin is posterior pituitary hormone which is synthesized as an inactive precursor in the hypothalamus along with its carrier protein neurophysin I. Together with neurophysin, it is packaged into neurosecretory

Target Details

vesicles and transported axonally to the nerve endings in the neurohypophysis, where it is either stored or secreted into the bloodstream. The precursor seems to be activated while it is being transported along the axon to the posterior pituitary. This hormone contracts smooth muscle during parturition and lactation. It is also involved in cognition, tolerance, adaptation and complex sexual and maternal behaviour, as well as in the regulation of water excretion and cardiovascular functions.

UniProt: [P01178](#)

Pathways: [SARS-CoV-2 Protein Interactome](#)

Application Details

Application Notes: Titration of the NEU1 antibody may be required due to differences in protocols and secondary/substrate sensitivity.\. Western blot: 1:1000,IHC (Paraffin): 1:50-1:100,Flow Cytometry: 1:10-1:50

Restrictions: For Research Use only

Handling

Format: Liquid

Buffer: In 1X PBS, pH 7.4, with 0.09 % sodium azide

Preservative: Sodium azide

Precaution of Use: This product contains Sodium azide: a POISONOUS AND HAZARDOUS SUBSTANCE which should be handled by trained staff only.

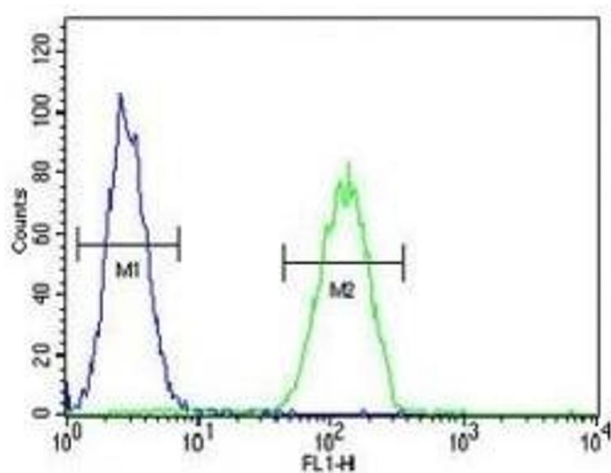
Storage: -20 °C

Storage Comment: Aliquot the NEU1 antibody and store frozen at -20°C or colder. Avoid repeated freeze-thaw cycles.



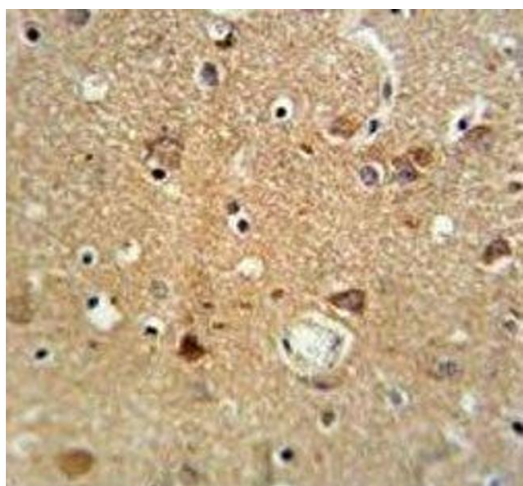
Western Blotting

Image 1. Western blot analysis of NEU1 antibody and MDA-MB231 lysate. Predicted molecular weight ~45 kDa.



Flow Cytometry

Image 2. NEU1 antibody flow cytometric analysis of MDA-MB231 cells (green) compared to a negative control (blue). FITC-conjugated goat-anti-rabbit secondary Ab was used for the analysis.



Immunohistochemistry

Image 3. NEU1 antibody IHC analysis in formalin fixed and paraffin embedded brain tissue.

Please check the [product details page](#) for more images. Overall 5 images are available for ABIN3032559.