

Datasheet for ABIN3032560
anti-NEU2 antibody (AA 23-50)

6 Images

[Go to Product page](#)

Overview

Quantity:	0.4 mL
Target:	NEU2
Binding Specificity:	AA 23-50
Reactivity:	Human
Host:	Rabbit
Clonality:	Polyclonal
Conjugate:	This NEU2 antibody is un-conjugated
Application:	Western Blotting (WB), ELISA, Immunofluorescence (IF), Flow Cytometry (FACS), Immunohistochemistry (IHC)

Product Details

Immunogen:	A portion of amino acids 23-50 from the human protein was used as the immunogen for this NEU2 antibody.
Isotype:	Ig Fraction
Purification:	Antigen affinity purified

Target Details

Target:	NEU2
Alternative Name:	NEU2 (NEU2 Products)
Background:	This gene belongs to a family of glycohydrolytic enzymes which remove sialic acid residues from glycoproteins and glycolipids. Expression studies in COS7 cells confirmed that this gene

Target Details

encodes a functional sialidase. Its cytosolic localization was demonstrated by cell fractionation experiments. [provided by RefSeq].

UniProt: [Q9Y3R4](#)

Pathways: [Regulation of Muscle Cell Differentiation](#), [Skeletal Muscle Fiber Development](#)

Application Details

Application Notes: Titration of the NEU2 antibody may be required due to differences in protocols and secondary/substrate sensitivity.\. Western blot: 1:1000,IHC (Paraffin): 1:10-1:50,Immunofluorescence: 1:10-1:50,Flow Cytometry: 1:10-1:50

Restrictions: For Research Use only

Handling

Format: Liquid

Buffer: In 1X PBS, pH 7.4, with 0.09 % sodium azide

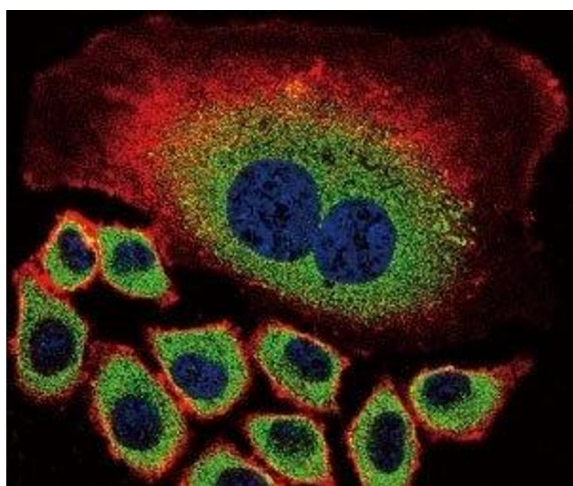
Preservative: Sodium azide

Precaution of Use: This product contains Sodium azide: a POISONOUS AND HAZARDOUS SUBSTANCE which should be handled by trained staff only.

Storage: -20 °C

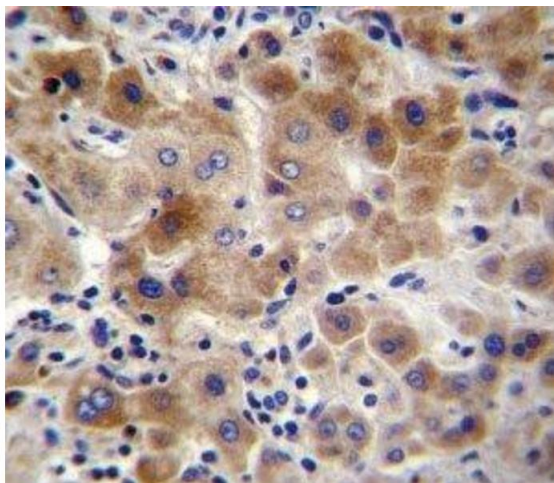
Storage Comment: Aliquot the NEU2 antibody and store frozen at -20°C or colder. Avoid repeated freeze-thaw cycles.

Images



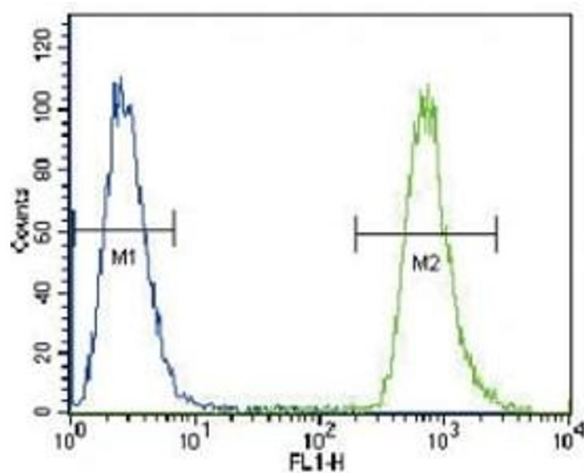
Immunofluorescence

Image 1. Confocal immunofluorescent analysis of NEU2 antibody with A549 cells followed by Alexa Fluor 488-conjugated goat anti-rabbit IgG (green). Actin filaments have been labeled with Alexa Fluor 555 Phalloidin (red). DAPI was used as a nuclear counterstain (blue).



Immunohistochemistry

Image 2. NEU2 antibody immunohistochemistry analysis in formalin fixed and paraffin embedded human liver tissue.



Flow Cytometry

Image 3. NEU2 antibody flow cytometric analysis of A549 cells (green) compared to a [negative control](#) (blue). FITC-conjugated goat-anti-rabbit secondary Ab was used for the analysis.

Please check the [product details page](#) for more images. Overall 6 images are available for ABIN3032560.