



[Go to Product page](#)

Datasheet for ABIN3032563  
**anti-SSR3 antibody (AA 8-23)**

6 Images

### Overview

Quantity:	100 µg
Target:	SSR3 (SSRg)
Binding Specificity:	AA 8-23
Reactivity:	Human, Mouse, Rat
Host:	Rabbit
Clonality:	Polyclonal
Conjugate:	This SSR3 antibody is un-conjugated
Application:	Western Blotting (WB), Immunohistochemistry (Paraffin-embedded Sections) (IHC (p)), Immunocytochemistry (ICC)

### Product Details

Immunogen:	Amino acids 8-23 (KQQSEEDLLLQDFSRN) were used as the immunogen for this SSR3 antibody (100% homologous in human, mouse and rat).
Isotype:	IgG
Purification:	Antigen affinity

### Target Details

Target:	SSR3 (SSRg)
Alternative Name:	SSR3 ( <a href="#">SSRg Products</a> )
Background:	Signal sequence receptor, gamma is also known as TRAPG. By immunoaffinity chromatography, biochemical purification, peptide sequence analysis, and screening of a rat

## Target Details

liver cDNA library, Hartmann et al.(1993) obtained a cDNA encoding Ssr3, which they termed Trap-gamma. The deduced 185-amino acid protein spans the membrane 4 times and is expressed as a 20-kD protein. Gross(2012) mapped the SSR3 gene to chromosome 3q25.31 based on an alignment of the SSR3 sequence with the genomic sequence (GRCh37). Hartmann et al.(1993)found that Ssr3 was associated in equal amounts with Ssr1, Ssr2, and Ssr4 in canine pancreatic microsomes.

UniProt: [Q9UNL2](#)

## Application Details

Application Notes: The stated application concentrations are suggested starting amounts. Titration of the SSR3 antibody may be required due to differences in protocols and secondary/substrate sensitivity.\.  
Western blot: 0.5-1 µg/mL,IHC (Paraffin): 0.5-1 µg/mL,Immunocytochemistry: 0.5-1 µg/mL

Restrictions: For Research Use only

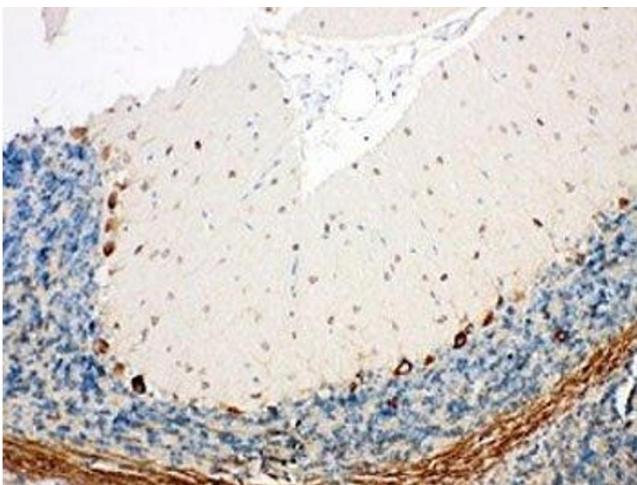
## Handling

Buffer: 0.5 mg/mL if reconstituted with 0.2 mL sterile DI water

Storage: -20 °C

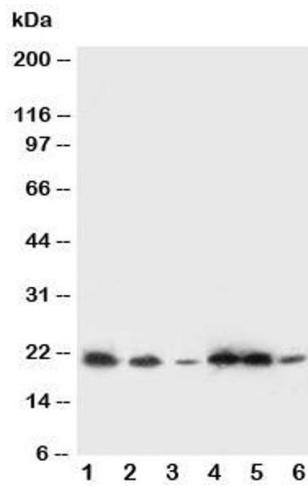
Storage Comment: After reconstitution, the SSR3 antibody can be stored for up to one month at 4°C. For long-term, aliquot and store at -20°C. Avoid repeated freezing and thawing.

## Images



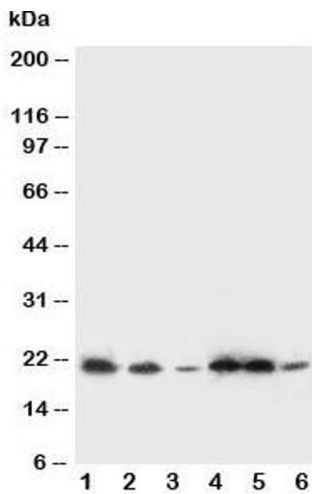
### Immunohistochemistry

**Image 1.** IHC-P: SSR3 antibody testing of rat brain tissue



### Western Blotting

**Image 2.** Western blot testing of SSR3 antibody and Lane 1: rat liver



### Western Blotting

**Image 3.** Western blot testing of SSR3 antibody and Lane 1: rat liver; 2: rat spleen; and human samples 3: A431; 4: HeLa; 5: U87; 6: SMMC-7721 cell lysate. Expected size ~20KD

Please check the [product details page](#) for more images. Overall 6 images are available for ABIN3032563.