

Datasheet for ABIN3032570
anti-STAT3 antibody (pSer727)



[Go to Product page](#)

6 Images

Overview

Quantity:	0.4 mL
Target:	STAT3
Binding Specificity:	pSer727
Reactivity:	Human, Mouse
Host:	Rabbit
Clonality:	Polyclonal
Conjugate:	This STAT3 antibody is un-conjugated
Application:	Western Blotting (WB), Immunohistochemistry (IHC), ELISA, Immunofluorescence (IF)

Product Details

Immunogen:	This p-STAT3 antibody was produced from rabbits immunized with a KLH conjugated synthetic phosphopeptide corresponding to amino acid residues surrounding pS727 of human STAT3.
Isotype:	Ig Fraction
Purification:	Antigen affinity purified

Target Details

Target:	STAT3
Alternative Name:	STAT3 (STAT3 Products)
Background:	STAT3 is a member of the STAT protein family. In response to cytokines and growth factors, STAT family members are phosphorylated by the receptor associated kinases, and then form homo- or heterodimers that translocate to the cell nucleus where they act as transcription

Target Details

activators. This protein is activated through phosphorylation in response to various cytokines and growth factors including IFNs, EGF, IL5, IL6, HGF, LIF and BMP2. It mediates the expression of a variety of genes in response to cell stimuli, and thus plays a key role in many cellular processes such as cell growth and apoptosis. The small GTPase Rac1 has been shown to bind and regulate the activity of this protein. PIAS3 protein is a specific inhibitor of this protein.

UniProt: [P40763](#)

Pathways: [JAK-STAT Signaling](#), [RTK Signaling](#), [Interferon-gamma Pathway](#), [Neurotrophin Signaling Pathway](#), [Dopaminergic Neurogenesis](#), [Response to Growth Hormone Stimulus](#), [Carbohydrate Homeostasis](#), [Stem Cell Maintenance](#), [Hepatitis C](#), [Protein targeting to Nucleus](#), [Feeding Behaviour](#), [CXCR4-mediated Signaling Events](#), [Signaling of Hepatocyte Growth Factor Receptor](#)

Application Details

Application Notes: Titration of the p-STAT3 antibody may be required due to differences in protocols and secondary/substrate sensitivity. \. Immunofluorescence: 1:200,Western blot: 1:1000,IHC (Paraffin): 1:50-1:100

Restrictions: For Research Use only

Handling

Format: Liquid

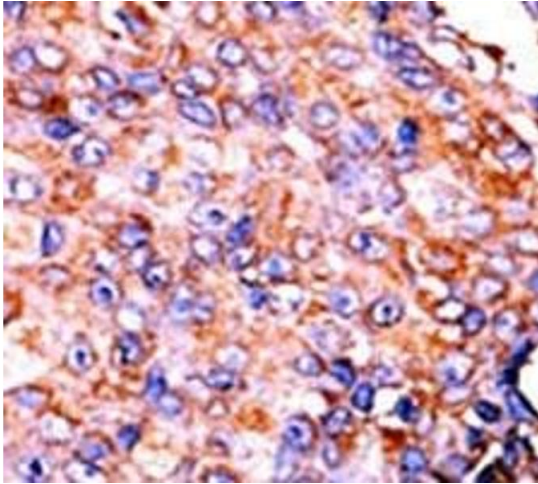
Buffer: In 1X PBS pH 7.4 with 0.09 % sodium azide

Preservative: Sodium azide

Precaution of Use: This product contains Sodium azide: a POISONOUS AND HAZARDOUS SUBSTANCE which should be handled by trained staff only.

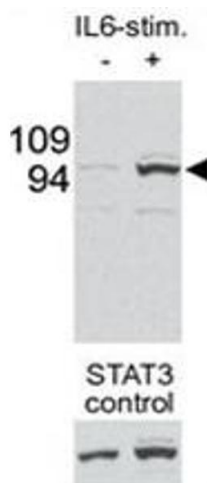
Storage: -20 °C

Storage Comment: Aliquot the p-STAT3 antibody and store frozen at -20°C or colder. Avoid repeated freeze-thaw cycles.



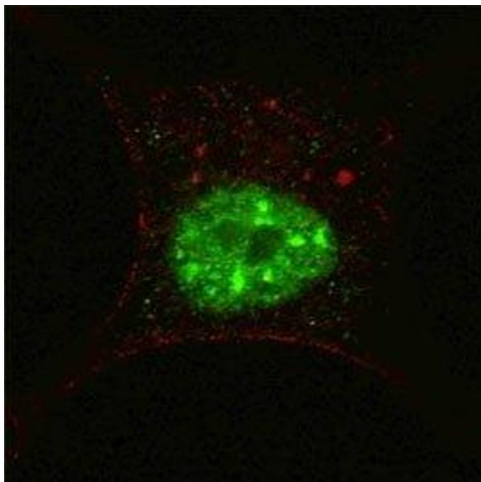
Immunohistochemistry

Image 1. IHC analysis of FFPE human breast carcinoma tissue stained with the p-STAT3 antibody.



Western Blotting

Image 2. Western blot testing of p-STAT3 antibody and mouse liver tissue/lysate collected before (-) or after (+) stimulation with IL-6 injection in mouse portal vein. Data is kindly provided by Drs. E. Bard-Chapeau and G-S. Feng from the Burnham Institute (La Jolla, CA).



Immunofluorescence

Image 3. Fluorescent confocal image of SY5Y cells stained with p-STAT3 antibody at 1:200. Note the highly specific localization of the immunosignal to the nucleus.

Please check the [product details page](#) for more images. Overall 6 images are available for ABIN3032570.