

Datasheet for ABIN3032590  
**anti-SIRT3 antibody (AA 250-279)**

## 6 Images

[Go to Product page](#)

## Overview

Quantity:	0.4 mL
Target:	SIRT3
Binding Specificity:	AA 250-279
Reactivity:	Human, Mouse
Host:	Rabbit
Clonality:	Polyclonal
Conjugate:	This SIRT3 antibody is un-conjugated
Application:	Western Blotting (WB), ELISA, Immunohistochemistry (IHC)

## Product Details

Immunogen:	A portion of amino acids 250-279 from the human protein was used as the immunogen for this SIRT3 antibody.
Isotype:	Ig Fraction
Purification:	Antigen affinity purified

## Target Details

Target:	SIRT3
Alternative Name:	SIRT3 ( <a href="#">SIRT3 Products</a> )
Background:	<p>SIRT3 is a member of the sirtuin family of proteins, homologs to the yeast Sir2 protein.</p> <p>Members of the sirtuin family are characterized by a sirtuin core domain and grouped into four classes. The functions of human sirtuins have not yet been determined, however, yeast sirtuin</p>

## Target Details

proteins are known to regulate epigenetic gene silencing and suppress recombination of rDNA. Studies suggest that the human sirtuins may function as intracellular regulatory proteins with mono-ADP-ribosyltransferase activity. The SIRT3 is included in class I of the sirtuin family.

UniProt: [Q9NTG7](#)

## Application Details

Application Notes: Titration of the SIRT3 antibody may be required due to differences in protocols and secondary/substrate sensitivity.\. Western blot: 1:1000,IHC (Paraffin): 1:50-1:100

Restrictions: For Research Use only

## Handling

Format: Liquid

Buffer: In 1X PBS pH 7.4 with 0.09 % sodium azide

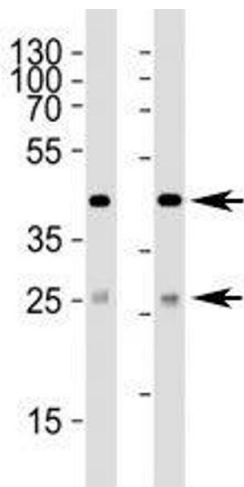
Preservative: Sodium azide

Precaution of Use: This product contains Sodium azide: a POISONOUS AND HAZARDOUS SUBSTANCE which should be handled by trained staff only.

Storage: -20 °C

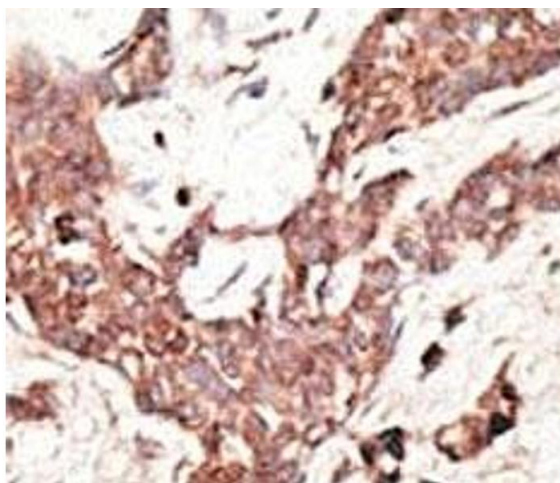
Storage Comment: Aliquot the SIRT3 antibody and store frozen at -20°C or colder. Avoid repeated freeze-thaw cycles.

## Images



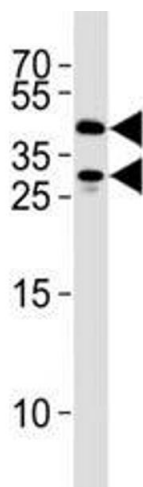
### Western Blotting

**Image 1.** Western blot analysis of lysate from (1) 293 and (2) HepG2 cell line using SIRT3 antibody at 1:1000. Predicted size: 44/28 kDa (full/processed)



#### Immunohistochemistry

**Image 2.** IHC analysis of FFPE human breast carcinoma tissue stained with the SIRT3 antibody



#### Western Blotting

**Image 3.** SIRT3 antibody western blot analysis in 293 cell lysate. Predicted size: 44/28 kDa (full/processed)

Please check the [product details page](#) for more images. Overall 6 images are available for ABIN3032590.