



[Go to Product page](#)

Datasheet for ABIN3032596

anti-SIRT6 antibody (AA 276-305)

3 Images

Overview

Quantity:	0.4 mL
Target:	SIRT6
Binding Specificity:	AA 276-305
Reactivity:	Human
Host:	Rabbit
Clonality:	Polyclonal
Conjugate:	This SIRT6 antibody is un-conjugated
Application:	Western Blotting (WB), ELISA, Immunohistochemistry (IHC)

Product Details

Immunogen:	A portion of amino acids 276-305 from the human protein was used as the immunogen for this SIRT6 antibody.
Isotype:	Ig Fraction
Purification:	Antigen affinity purified

Target Details

Target:	SIRT6
Alternative Name:	SIRT6 (SIRT6 Products)
Background:	NAD-dependent protein deacetylase. Has deacetylase activity towards 'Lys-9' and 'Lys-56' of histone H3. Modulates acetylation of histone H3 in telomeric chromatin during the S-phase of the cell cycle. Deacetylates 'Lys-9' of histone H3 at NF-kappa-B target promoters and may

Target Details

down-regulate the expression of a subset of NF-kappa-B target genes. Deacetylation of nucleosomes interferes with RELA binding to target DNA. May be required for the association of WRN with telomeres during S-phase and for normal telomere maintenance. Required for genomic stability. Required for normal IGF1 serum levels and normal glucose homeostasis. Modulates cellular senescence and apoptosis. Regulates the production of TNF protein (By similarity).

UniProt: [Q8N6T7](#)

Application Details

Application Notes: Titration of the SIRT6 antibody may be required due to differences in protocols and secondary/substrate sensitivity.\. Western blot: 1:1000,IHC (Paraffin): 1:10-1:50

Restrictions: For Research Use only

Handling

Format: Liquid

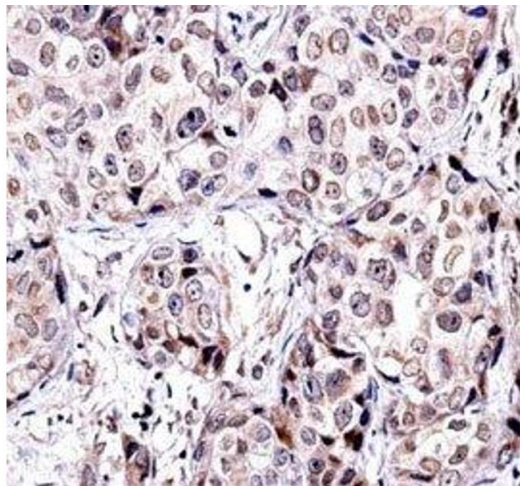
Buffer: In 1X PBS pH 7.4 with 0.09 % sodium azide

Preservative: Sodium azide

Precaution of Use: This product contains Sodium azide: a POISONOUS AND HAZARDOUS SUBSTANCE which should be handled by trained staff only.

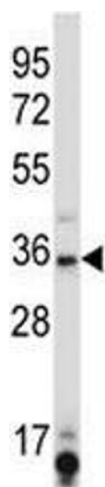
Storage: -20 °C

Storage Comment: Aliquot the SIRT6 antibody and store frozen at -20°C or colder. Avoid repeated freeze-thaw cycles.



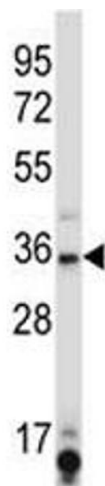
Immunohistochemistry

Image 1. SIRT6 antibody immunohistochemistry analysis in formalin fixed and paraffin embedded human breast carcinoma.



Western Blotting

Image 2. SIRT6 antibody western blot analysis in K562 lysate.



Western Blotting

Image 3. SIRT6 antibody western blot analysis in K562 lysate.