



[Go to Product page](#)

Datasheet for ABIN3032598

anti-SIRT6 antibody (AA 290-319)

3 Images

Overview

| | |
|----------------------|--|
| Quantity: | 0.4 mL |
| Target: | SIRT6 |
| Binding Specificity: | AA 290-319 |
| Reactivity: | Human, Mouse |
| Host: | Rabbit |
| Clonality: | Polyclonal |
| Conjugate: | This SIRT6 antibody is un-conjugated |
| Application: | Western Blotting (WB), ELISA, Immunohistochemistry (IHC) |

Product Details

| | |
|---------------|--|
| Immunogen: | A portion of amino acids 290-319 from the human protein was used as the immunogen for this SIRT6 antibody. |
| Isotype: | Ig Fraction |
| Purification: | Purified |

Target Details

| | |
|-------------------|---|
| Target: | SIRT6 |
| Alternative Name: | SIRT6 (SIRT6 Products) |
| Background: | SIRT6 is a member of the sirtuin family of proteins, homologs to the yeast Sir2 protein. Members of the sirtuin family are characterized by a sirtuin core domain and grouped into four classes. The functions of human sirtuins have not yet been determined, however, yeast sirtuin |

Target Details

proteins are known to regulate epigenetic gene silencing and suppress recombination of rDNA. Studies suggest that the human sirtuins may function as intracellular regulatory proteins with mono-ADP-ribosyltransferase activity.

UniProt: [Q8N6T7](#)

Application Details

Application Notes: Titration of the SIRT6 antibody may be required due to differences in protocols and secondary/substrate sensitivity.\. IHC (Paraffin): 1:50-1:100,Western blot: 1:1000

Restrictions: For Research Use only

Handling

Format: Liquid

Buffer: In 1X PBS pH 7.4 with 0.09 % sodium azide

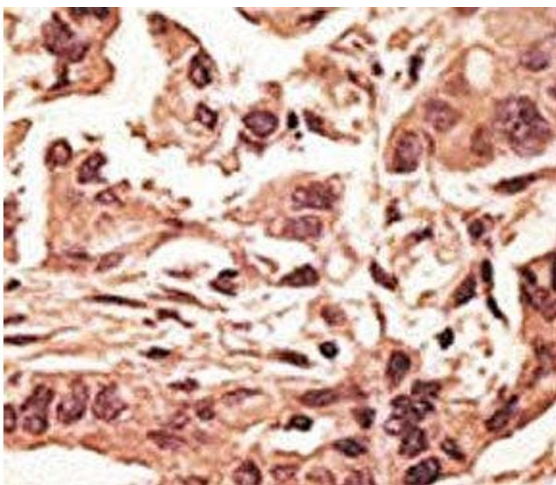
Preservative: Sodium azide

Precaution of Use: This product contains Sodium azide: a POISONOUS AND HAZARDOUS SUBSTANCE which should be handled by trained staff only.

Storage: -20 °C

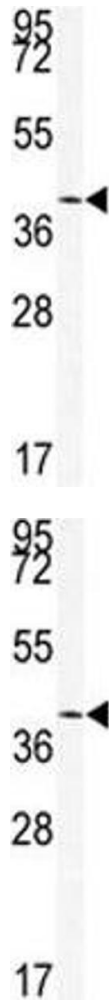
Storage Comment: Aliquot the SIRT6 antibody and store frozen at -20°C or colder. Avoid repeated freeze-thaw cycles.

Images



Immunohistochemistry

Image 1. IHC analysis of FFPE human breast carcinoma tissue stained with the SIRT6 antibody



Western Blotting

Image 2. Western blot analysis of SIRT6 antibody and mouse stomach tissue lysate



Western Blotting

Image 3. Western blot analysis of SIRT6 antibody and mouse stomach tissue lysate