

Datasheet for ABIN3032602
anti-SKP2 antibody (AA 156-185)



[Go to Product page](#)

3 Images

Overview

Quantity:	0.4 mL
Target:	SKP2
Binding Specificity:	AA 156-185
Reactivity:	Human
Host:	Rabbit
Clonality:	Polyclonal
Conjugate:	This SKP2 antibody is un-conjugated
Application:	Western Blotting (WB), ELISA, Flow Cytometry (FACS)

Product Details

Immunogen:	A portion of amino acids 156-185 from the human protein was used as the immunogen for this SKP2 antibody.
Isotype:	Ig Fraction
Purification:	Purified

Target Details

Target:	SKP2
Alternative Name:	SKP2 (SKP2 Products)
Background:	SKP2 is a member of the F-box protein family which is characterized by an approximately 40 amino acid motif, the F-box. The F-box proteins constitute one of the four subunits of ubiquitin protein ligase complex called SCFs (SKP1-cullin-F-box), which function in phosphorylation-

Target Details

dependent ubiquitination. The F-box proteins are divided into 3 classes: Fbws containing WD-40 domains, Fbls containing leucine-rich repeats, and Fbxs containing either different protein-protein interaction modules or no recognizable motifs. The protein encoded by this gene belongs to the Fbls class, in addition to an F-box, this protein contains 10 tandem leucine-rich repeats. This protein is an essential element of the cyclin A-CDK2 S-phase kinase. It specifically recognizes phosphorylated cyclin-dependent kinase inhibitor 1B (CDKN1B, also referred to as p27 or KIP1) predominantly in S phase and interacts with S-phase kinase-associated protein 1 (SKP1 or p19). In addition, this gene is established as a protooncogene causally involved in the pathogenesis of lymphomas.

UniProt: [Q13309](#)

Pathways: [Mitotic G1-G1/S Phases](#)

Application Details

Application Notes: Titration of the SKP2 antibody may be required due to differences in protocols and secondary/substrate sensitivity.\. Western blot: 1:1000,Flow Cytometry: 1:10-1:50

Restrictions: For Research Use only

Handling

Format: Liquid

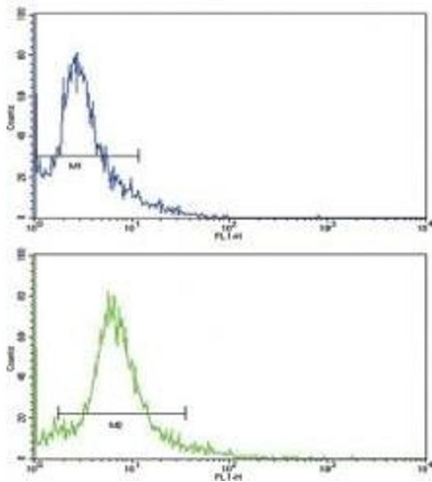
Buffer: In 1X PBS, pH 7.4, with 0.09 % sodium azide

Preservative: Sodium azide

Precaution of Use: This product contains Sodium azide: a POISONOUS AND HAZARDOUS SUBSTANCE which should be handled by trained staff only.

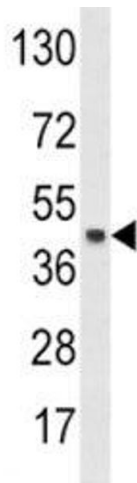
Storage: -20 °C

Storage Comment: Aliquot the SKP2 antibody and store frozen at -20°C or colder. Avoid repeated freeze-thaw cycles.



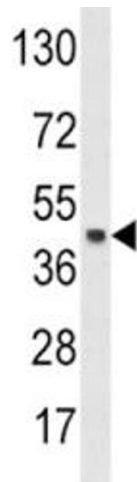
Flow Cytometry

Image 1. Flow cytometric analysis of HeLa cells using SKP2 antibody (green) compared to a negative control (blue). FITC-conjugated goat-anti-rabbit secondary Ab was used for the analysis.



Western Blotting

Image 2. Western blot analysis of SKP2 antibody and HeLa lysate. Predicted molecular weight ~48 kDa



Western Blotting

Image 3. Western blot analysis of SKP2 antibody and HeLa lysate. Predicted molecular weight ~48 kDa