

Datasheet for ABIN3032603
anti-SLUG antibody (AA 1-30)[Go to Product page](#)

3 Images

Overview

Quantity:	0.4 mL
Target:	SLUG (SNAI2)
Binding Specificity:	AA 1-30
Reactivity:	Human
Host:	Rabbit
Clonality:	Polyclonal
Conjugate:	This SLUG antibody is un-conjugated
Application:	Western Blotting (WB), ELISA

Product Details

Immunogen:	A portion of amino acids 1-30 from the human protein was used as the immunogen for this SLUG antibody.
Isotype:	Ig Fraction
Cross-Reactivity (Details):	Expected species reactivity: Bovine, Mouse, Rat
Purification:	Purified

Target Details

Target:	SLUG (SNAI2)
Alternative Name:	SLUG (SNAI2) (SNAI2 Products)
Background:	SNAI2/SLUG is a transcriptional repressor that modulates both activator-dependent and basal

Target Details

transcription. Involved in the generation and migration of neural crest cells. Plays a role in mediating RAF1-induced transcriptional repression of the TJ protein, occludin (OCLN) and subsequent oncogenic transformation of epithelial cells (By similarity). Represses BRCA2 expression by binding to its E2-box-containing silencer and recruiting CTBP1 and HDAC1 in breast cells. In epidermal keratinocytes, binds to the E-box in ITGA3 promoter and represses its transcription. Involved in the regulation of ITGB1 and ITGB4 expression and cell adhesion and proliferation in epidermal keratinocytes. Binds to E-box2 domain of BSG and activates its expression during TGFBI-induced epithelial-mesenchymal transition (EMT) in hepatocytes. Represses E-Cadherin/CDH1 transcription via E-box elements. Involved in osteoblast maturation. Binds to RUNX2 and SOC9 promoters and may act as a positive and negative transcription regulator, respectively, in osteoblasts. Binds to CXCL12 promoter via E-box regions in mesenchymal stem cells and osteoblasts. Plays an essential role in TWIST1-induced EMT and its ability to promote invasion and metastasis.

UniProt: [O43623](#)

Application Details

Application Notes: Titration of the SLUG antibody may be required due to differences in protocols and secondary/substrate sensitivity.\. Western blot: 1:1000

Restrictions: For Research Use only

Handling

Format: Liquid

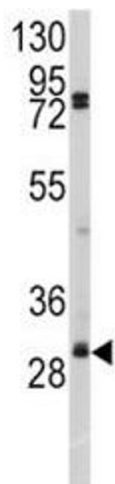
Buffer: In 1X PBS, pH 7.4, with 0.09 % sodium azide

Preservative: Sodium azide

Precaution of Use: This product contains Sodium azide: a POISONOUS AND HAZARDOUS SUBSTANCE which should be handled by trained staff only.

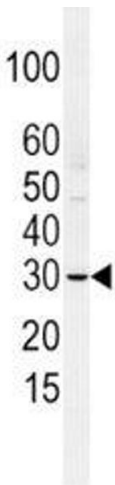
Storage: -20 °C

Storage Comment: Aliquot the SLUG antibody and store frozen at -20°C or colder. Avoid repeated freeze-thaw cycles.



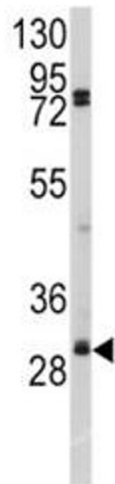
Western Blotting

Image 1. Western blot analysis of SLUG antibody and A2058 lysate. Predicted molecular weight ~ 30 kDa.



Western Blotting

Image 2. Western blot analysis of SLUG antibody and HCSMC lysate. Predicted molecular weight ~ 30 kDa.



Western Blotting

Image 3. Western blot analysis of SLUG antibody and A2058 lysate. Predicted molecular weight ~ 30 kDa.