



[Go to Product page](#)

Datasheet for ABIN3032608
anti-SMAD4 antibody (AA 400-428)

6 Images

Overview

Quantity:	0.4 mL
Target:	SMAD4
Binding Specificity:	AA 400-428
Reactivity:	Human
Host:	Rabbit
Clonality:	Polyclonal
Conjugate:	This SMAD4 antibody is un-conjugated
Application:	Western Blotting (WB), ELISA, Immunohistochemistry (IHC), Immunofluorescence (IF), Flow Cytometry (FACS)

Product Details

Immunogen:	A portion of amino acids 400-428 from the human protein was used as the immunogen for this SMAD4 antibody.
Isotype:	Ig Fraction
Cross-Reactivity (Details):	Expected species reactivity: Mouse, Rat, Bovine, Pig
Purification:	Purified

Target Details

Target:	SMAD4
Alternative Name:	SMAD4 (SMAD4 Products)

Target Details

Background: In muscle physiology, SMAD4 plays a central role in the balance between atrophy and hypertrophy. When recruited by MSTN, promotes atrophy response via phosphorylated SMAD2/4. MSTN decrease causes SMAD4 release and subsequent recruitment by the BMP pathway to promote hypertrophy via phosphorylated SMAD1/5/8. Acts synergistically with SMAD1 and YY1 in bone morphogenetic protein (BMP)-mediated cardiac-specific gene expression. Binds to SMAD binding elements (SBEs) (5'-GTCT/AGAC-3') within BMP response element (BMPRE) of cardiac activating regions (By similarity). [UniProt]

UniProt: [Q13485](#)

Pathways: [Cell Division Cycle](#), [Chromatin Binding](#), [Autophagy](#)

Application Details

Application Notes: Titration of the SMAD4 antibody may be required due to differences in protocols and secondary/substrate sensitivity. Western blot: 1:1000, IHC (Paraffin): 1:10-1:50, Immunofluorescence: 1:10-1:50, Flow Cytometry: 1:10-1:50

Restrictions: For Research Use only

Handling

Format: Liquid

Buffer: In 1X PBS, pH 7.4, with 0.09 % sodium azide

Preservative: Sodium azide

Precaution of Use: This product contains Sodium azide: a POISONOUS AND HAZARDOUS SUBSTANCE which should be handled by trained staff only.

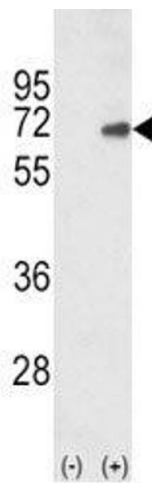
Storage: -20 °C

Storage Comment: Aliquot the SMAD4 antibody and store frozen at -20°C or colder. Avoid repeated freeze-thaw cycles.



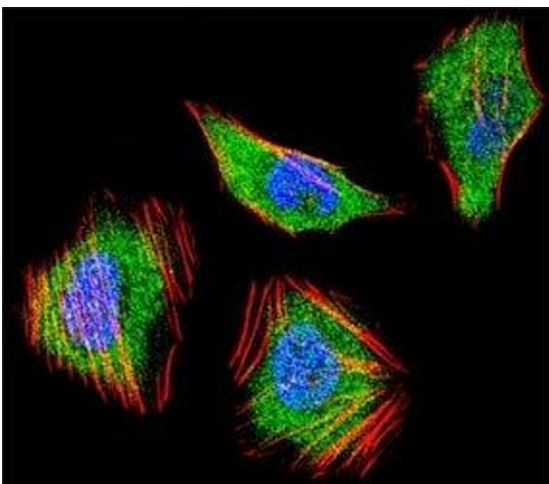
Immunohistochemistry

Image 1. IHC analysis of FFPE human skeletal muscle stained with SMAD4 antibody



Western Blotting

Image 2. Western blot analysis of SMAD4 antibody and 293 cell lysate (2 ug/lane) either nontransfected (Lane 1) or transiently transfected with the human gene (2). Predicted molecular weight: 60-70 kDa.



Immunofluorescence

Image 3. Fluorescent confocal image of HeLa cell stained with SMAD4 antibody at 1:25. SMAD4 immunoreactivity is localized to the cytoplasm and nucleus.

Please check the [product details page](#) for more images. Overall 6 images are available for ABIN3032608.