



[Go to Product page](#)

Datasheet for ABIN3032612
anti-SMAD1 antibody (C-Term)

5 Images

Overview

Quantity:	100 µg
Target:	SMAD1
Binding Specificity:	C-Term
Reactivity:	Human, Mouse, Rat
Host:	Rabbit
Clonality:	Polyclonal
Conjugate:	This SMAD1 antibody is un-conjugated
Application:	Western Blotting (WB), Immunohistochemistry (Paraffin-embedded Sections) (IHC (p)), Immunocytochemistry (ICC)

Product Details

Immunogen:	An amino acid sequence from the C-terminus of mouse SMAD family member 1 (AEISRGDVQAVAYEE) was used as the immunogen for this Smad1 antibody.
Isotype:	IgG
Purification:	Antigen affinity

Target Details

Target:	SMAD1
Alternative Name:	SMAD1 (SMAD1 Products)
Background:	Mothers against decapentaplegic homolog 1, also known as SMAD family member 1, is a protein that in humans is encoded by the SMAD1 gene. SMAD1 belongs to the SMAD, a family

Target Details

of proteins similar to the gene products of the Drosophila gene mothers against decapentaplegic(Mad) and the C. elegans gene Sma. The gene was assigned to human chromosome 4q31.21. SMAD proteins are signal transducers and transcriptional modulators that mediate multiple signaling pathways.

UniProt: [P70340](#)

Pathways: [Stem Cell Maintenance](#), [Regulation of Muscle Cell Differentiation](#), [Skeletal Muscle Fiber Development](#)

Application Details

Application Notes: The stated application concentrations are suggested starting amounts. Titration of the SMAD1 antibody may be required due to differences in protocols and secondary/substrate sensitivity.\. Western blot: 0.5-1 µg/mL,IHC (Paraffin): 0.5-1 µg/mL,Immunocytochemistry: 0.5-1 µg/mL

Restrictions: For Research Use only

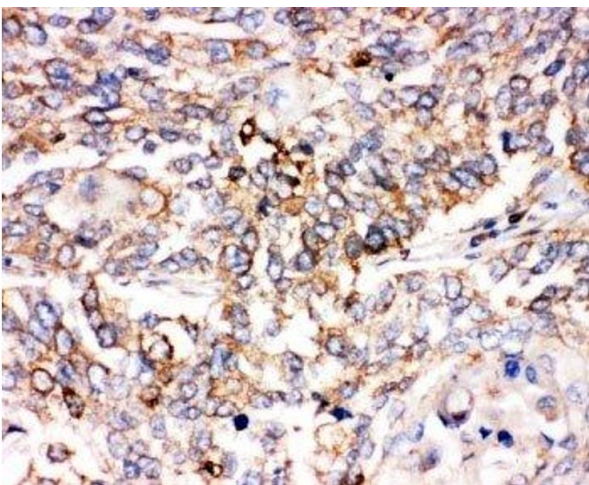
Handling

Buffer: 0.5 mg/mL if reconstituted with 0.2 mL sterile DI water

Storage: -20 °C

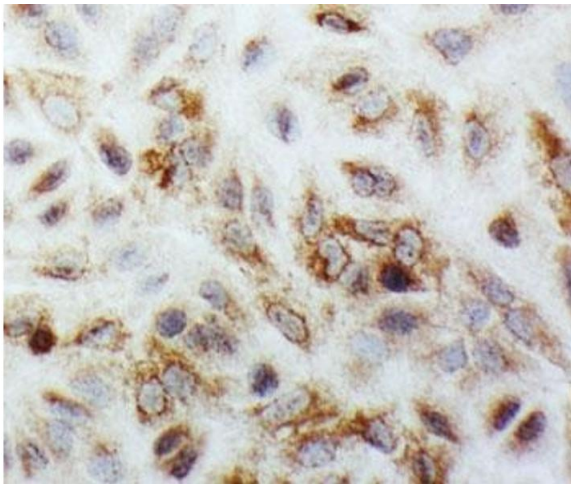
Storage Comment: After reconstitution, the SMAD1 antibody can be stored for up to one month at 4°C. For long-term, aliquot and store at -20°C. Avoid repeated freezing and thawing.

Images



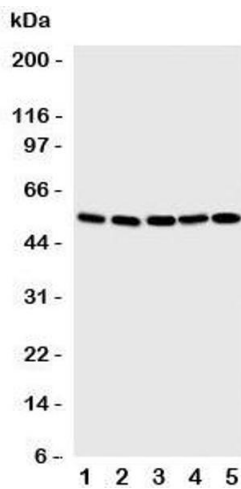
Immunohistochemistry

Image 1. IHC-P: SMAD1 antibody testing of human lung cancer tissue



Immunocytochemistry

Image 2. ICC testing of SMAD1 antibody and A549 cells



Western Blotting

Image 3. Western blot testing of SMAD1 antibody and Lane 1: SMMC-7721; 2: K562; 3: HT1080; 4: HeLa; 5: Jurkat cell lysate. Predicted molecular weight: 52~60 kDa.

Please check the [product details page](#) for more images. Overall 5 images are available for ABIN3032612.