

Datasheet for ABIN3032613  
**anti-SMAD2 antibody (AA 97-125)**[Go to Product page](#)

## 5 Images

## Overview

Quantity:	0.4 mL
Target:	SMAD2
Binding Specificity:	AA 97-125
Reactivity:	Human, Mouse
Host:	Rabbit
Clonality:	Polyclonal
Conjugate:	This SMAD2 antibody is un-conjugated
Application:	Western Blotting (WB), ELISA, Immunofluorescence (IF), Flow Cytometry (FACS)

## Product Details

Immunogen:	A portion of amino acids 97-125 from the human protein was used as the immunogen for this SMAD2 antibody.
Isotype:	Ig Fraction
Cross-Reactivity (Details):	Expected species reactivity: Rat, Bovine, Pig, Chicken, Zebrafish, Drosophila
Purification:	Antigen affinity purified

## Target Details

Target:	SMAD2
Alternative Name:	SMAD2 ( <a href="#">SMAD2 Products</a> )
Background:	Receptor-regulated SMAD (R-SMAD) that is an intracellular signal transducer and

## Target Details

transcriptional modulator activated by TGF-beta (transforming growth factor) and activin type 1 receptor kinases. Binds the TRE element in the promoter region of many genes that are regulated by TGF-beta and, on formation of the SMAD2/SMAD4 complex, activates transcription. May act as a tumor suppressor in colorectal carcinoma. Positively regulates PDPK1 kinase activity by stimulating its dissociation from the 14-3-3 protein YWHAQ which acts as a negative regulator. [UniProt]

UniProt: [Q15796](#)

Pathways: [Cell Division Cycle](#), [Hormone Transport](#), [Chromatin Binding](#), [Protein targeting to Nucleus](#)

## Application Details

Application Notes: Titration of the SMAD2 antibody may be required due to differences in protocols and secondary/substrate sensitivity.\. Immunofluorescence: 1:100,Western blot: 1:1000,Flow Cytometry: 1:10-1:50

Restrictions: For Research Use only

## Handling

Format: Liquid

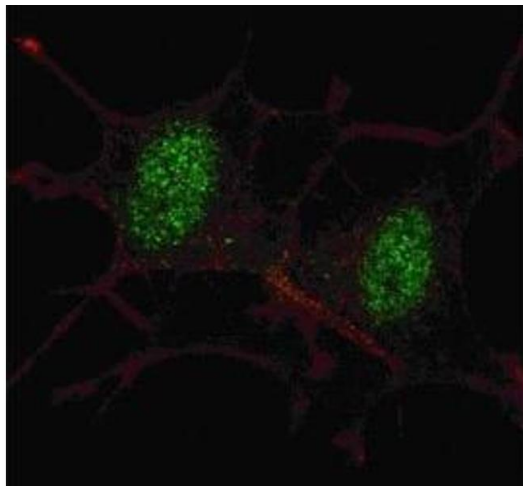
Buffer: In 1X PBS, pH 7.4, with 0.09 % sodium azide

Preservative: Sodium azide

Precaution of Use: This product contains Sodium azide: a POISONOUS AND HAZARDOUS SUBSTANCE which should be handled by trained staff only.

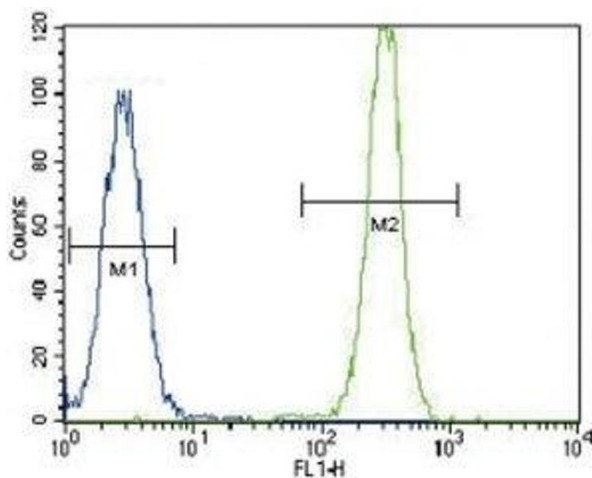
Storage: -20 °C

Storage Comment: Aliquot the SMAD2 antibody and store frozen at -20°C or colder. Avoid repeated freeze-thaw cycles.



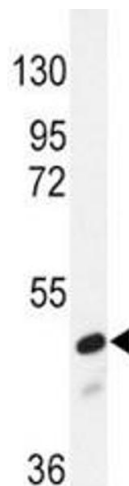
#### Immunofluorescence

**Image 1.** Fluorescent confocal image of SY5Y cells stained with SMAD2 antibody at 1:100. Note the highly specific localization of the SMAD2 to the nucleus.



#### Flow Cytometry

**Image 2.** SMAD2 antibody flow cytometric analysis of HeLa cells (right histogram) compared to a negative control (left histogram). FITC-conjugated goat-anti-rabbit secondary Ab was used for the analysis.



#### Western Blotting

**Image 3.** Western blot analysis of SMAD2 antibody and NIH3T3 lysate. Predicted molecular weight: 52~60 kDa.

Please check the [product details page](#) for more images. Overall 5 images are available for ABIN3032613.