

Datasheet for ABIN3032617
anti-SMAD2 antibody (N-Term)[Go to Product page](#)

6 Images

Overview

Quantity:	100 µg
Target:	SMAD2
Binding Specificity:	N-Term
Reactivity:	Human, Mouse, Rat
Host:	Rabbit
Clonality:	Polyclonal
Conjugate:	This SMAD2 antibody is un-conjugated
Application:	Western Blotting (WB), Immunohistochemistry (Paraffin-embedded Sections) (IHC (p)), Immunocytochemistry (ICC)

Product Details

Immunogen:	An amino acid sequence from the N-terminus of human Smad2 (DQWDTTGLYSFSEQTRSLD) was used as the immunogen for this Smad2 antibody (100% homologous in human, mouse and rat).
Isotype:	Ig Fraction
Purification:	Antigen affinity

Target Details

Target:	SMAD2
Alternative Name:	Smad2 (SMAD2 Products)
Background:	SMAD family member 2, also known as MADR2, and MADH2 (Mothers against decapentaplegic

Target Details

homolog 2), is a protein that in humans is encoded by the SMAD2 gene. It belongs to the SMAD family of proteins similar to the gene products of the Drosophila gene 'mothers against decapentaplegic' (Mad) and the C. elegans gene 'Sma.' The gene has been mapped to 18q21.1, a region which is frequently deleted in colorectal cancers. SMAD2 mediates the signal of the transforming growth factor (TGF)-beta, and thus regulates multiple cellular processes, such as cell proliferation, apoptosis, and differentiation. This protein is recruited to the TGF-beta receptors through its interaction with the SMAD anchor for receptor activation (SARA) protein. In response to TGF-beta signal, this protein is phosphorylated by the TGF-beta receptors.

UniProt: [Q15796](#)

Pathways: [Cell Division Cycle](#), [Hormone Transport](#), [Chromatin Binding](#), [Protein targeting to Nucleus](#)

Application Details

Application Notes: The stated application concentrations are suggested starting points. Titration of the Smad2 antibody may be required due to differences in protocols and secondary/substrate sensitivity.\.
Western blot: 0.5-1 µg/mL,IHC (Paraffin): 0.5-1 µg/mL,Immunocytochemistry: 0.5-1 µg/mL

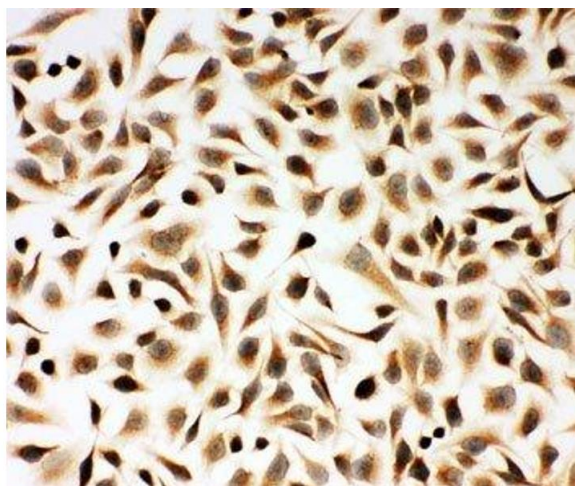
Restrictions: For Research Use only

Handling

Buffer: 0.5 mg/mL if reconstituted with 0.2 mL sterile DI water

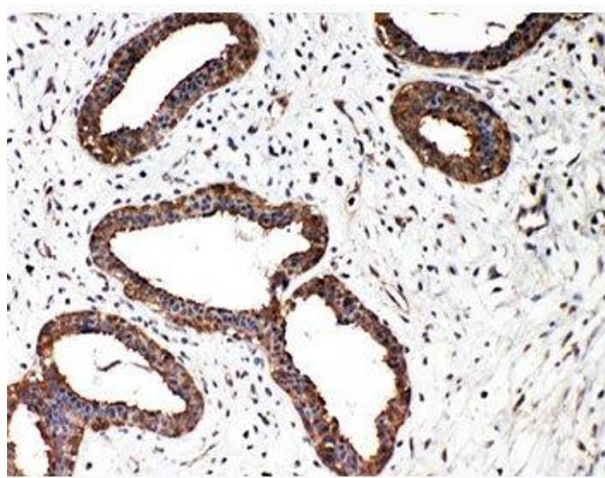
Storage: -20 °C

Storage Comment: After reconstitution, the Smad2 antibody can be stored for up to one month at 4°C. For long-term, aliquot and store at -20°C. Avoid repeated freezing and thawing.



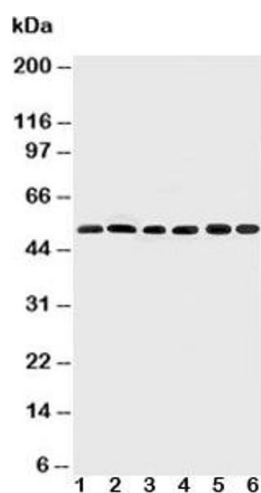
Immunocytochemistry

Image 1. ICC testing of Smad2 antibody and HeLa cells



Immunohistochemistry

Image 2. IHC-P: Smad2 antibody testing of human breast cancer tissue



Western Blotting

Image 3. Western blot testing of Smad2 antibody and Lane 1: rat brain; 2: HeLa; 3: SMMC-7721; 4: Jurkat; 5: U87; 6: MCF-7 cell lysate. Predicted molecular weight: 52~60 kDa.

Please check the [product details page](#) for more images. Overall 6 images are available for ABIN3032617.