

Datasheet for ABIN3032621
anti-SMAD3 antibody (AA 186-215)

6 Images

[Go to Product page](#)

Overview

Quantity:	0.4 mL
Target:	SMAD3
Binding Specificity:	AA 186-215
Reactivity:	Human, Mouse
Host:	Rabbit
Clonality:	Polyclonal
Conjugate:	This SMAD3 antibody is un-conjugated
Application:	Western Blotting (WB), ELISA, Immunohistochemistry (IHC), Immunofluorescence (IF), Flow Cytometry (FACS)

Product Details

Immunogen:	A portion of amino acids 186-215 from the human protein was used as the immunogen for this SMAD3 antibody.
Isotype:	Ig Fraction
Cross-Reactivity (Details):	Expected species reactivity: Rat, Pig, Chicken
Purification:	Antigen affinity purified

Target Details

Target:	SMAD3
Alternative Name:	SMAD3 (SMAD3 Products)

Target Details

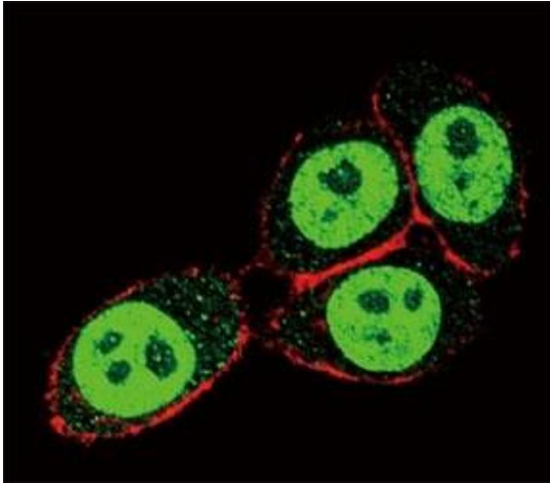
Background:	SMAD3 belongs to the SMAD, a family of proteins similar to the gene products of the Drosophila gene 'mothers against decapentaplegic' (Mad) and the C. elegans gene Sma. SMAD proteins are signal transducers and transcriptional modulators that mediate multiple signaling pathways. This protein functions as a transcriptional modulator activated by transforming growth factor-beta and is thought to play a role in the regulation of carcinogenesis.
UniProt:	P84022
Pathways:	Cell Division Cycle , Chromatin Binding , Cell-Cell Junction Organization , Positive Regulation of Endopeptidase Activity , Autophagy

Application Details

Application Notes:	Titration of the SMAD3 antibody may be required due to differences in protocols and secondary/substrate sensitivity.\. Western blot: 1:1000,IHC (Paraffin): 1:10-1:50,Immunofluorescence: 1:10-1:50,Flow Cytometry: 1:10-1:50
Restrictions:	For Research Use only

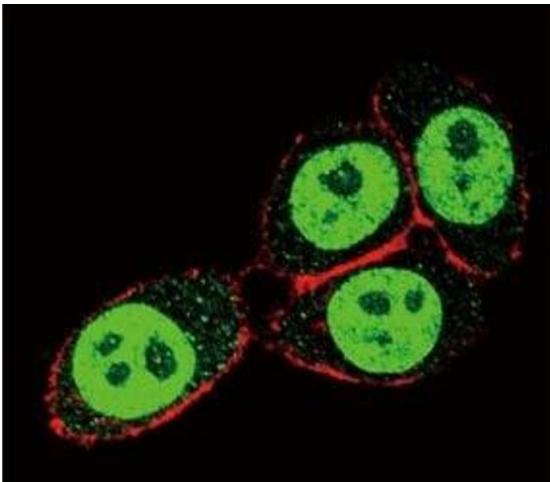
Handling

Format:	Liquid
Buffer:	In 1X PBS, pH 7.4, with 0.09 % sodium azide
Preservative:	Sodium azide
Precaution of Use:	This product contains Sodium azide: a POISONOUS AND HAZARDOUS SUBSTANCE which should be handled by trained staff only.
Storage:	-20 °C
Storage Comment:	Aliquot the SMAD3 antibody and store frozen at -20°C or colder. Avoid repeated freeze-thaw cycles.



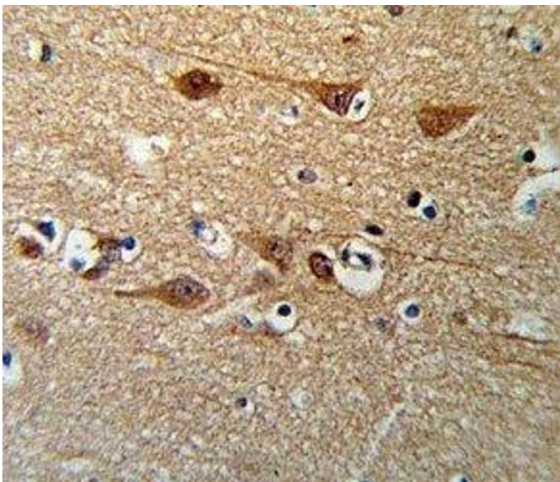
Immunofluorescence

Image 1. Confocal immunofluorescent analysis of SMAD3 antibody with HeLa cells followed by Alexa Fluor 488-conjugated goat anti-rabbit IgG (green). Actin filaments have been labeled with Alexa Fluor 555 Phalloidin (red).



Immunofluorescence

Image 2. Confocal immunofluorescent analysis of SMAD3 antibody with HeLa cells followed by Alexa Fluor 488-conjugated goat anti-rabbit IgG (green). Actin filaments have been labeled with Alexa Fluor 555 Phalloidin (red).



Immunohistochemistry

Image 3. SMAD3 antibody IHC analysis in formalin fixed and paraffin embedded brain tissue.

Please check the [product details page](#) for more images. Overall 6 images are available for ABIN3032621.