

Datasheet for ABIN3032629
anti-SMAD6 antibody (AA 358-386)[Go to Product page](#)

4 Images

Overview

Quantity:	0.4 mL
Target:	SMAD6
Binding Specificity:	AA 358-386
Reactivity:	Human
Host:	Rabbit
Clonality:	Polyclonal
Conjugate:	This SMAD6 antibody is un-conjugated
Application:	Western Blotting (WB), ELISA, Flow Cytometry (FACS)

Product Details

Immunogen:	A portion of amino acids 358-386 from the human protein was used as the immunogen for this SMAD6 antibody.
Isotype:	Ig Fraction
Cross-Reactivity (Details):	Expected species reactivity: Mouse
Purification:	Antigen affinity purified

Target Details

Target:	SMAD6
Alternative Name:	SMAD6 (SMAD6 Products)
Background:	SMAD6 acts as a mediator of TGF-beta and BMP antiinflammatory activity. Suppresses IL1R-TLR

Target Details

signaling through its direct interaction with PEL1, preventing NF-kappa-B activation, nuclear transport and NF-kappa-B-mediated expression of proinflammatory genes. May block the BMP-SMAD1 signaling pathway by competing with SMAD4 for receptor-activated SMAD1-binding. Binds to regulatory elements in target promoter regions. [UniProt]

UniProt: [O43541](#)

Pathways: [Chromatin Binding](#)

Application Details

Application Notes: The stated application concentrations are suggested starting amounts. Titration of the SMAD6 antibody may be required due to differences in protocols and secondary/substrate sensitivity.\. Western blot: 1:1000,Flow Cytometry: 1:10-1:50

Restrictions: For Research Use only

Handling

Format: Liquid

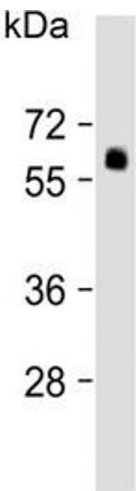
Buffer: In 1X PBS, pH 7.4, with 0.09 % sodium azide

Preservative: Sodium azide

Precaution of Use: This product contains Sodium azide: a POISONOUS AND HAZARDOUS SUBSTANCE which should be handled by trained staff only.

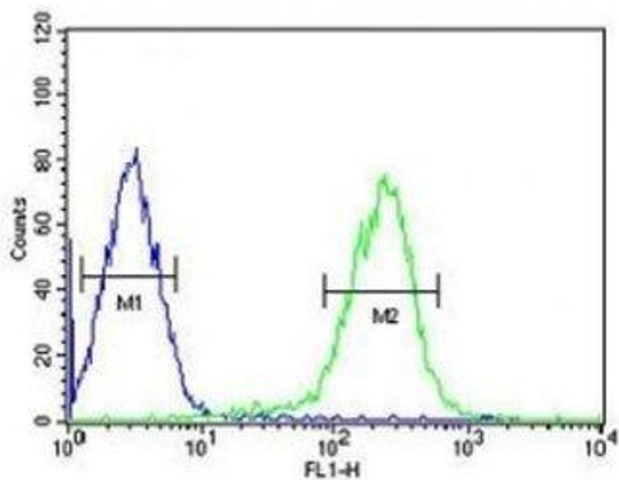
Storage: -20 °C

Storage Comment: Store at 4°C for up to one month. For long term, aliquot the SMAD6 antibody and store frozen at -20°C or colder. Avoid repeated freeze-thaw cycles.



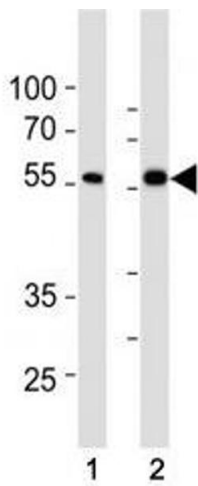
Western Blotting

Image 1. Western blot testing of human lung lysate with SMAD6 antibody. Observed molecular weight: 50~60 kDa.



Flow Cytometry

Image 2. SMAD6 antibody flow cytometric analysis of HepG2 cells (right histogram) compared to a negative control (left histogram). FITC-conjugated goat-anti-rabbit secondary Ab was used for the analysis.



Western Blotting

Image 3. SMAD6 antibody western blot analysis in (1) HepG2 and (2) HT29 lysate. Observed molecular weight: 50~60 kDa.

Please check the [product details page](#) for more images. Overall 4 images are available for ABIN3032629.