

Datasheet for ABIN3032638  
**anti-SNRPN antibody (N-Term)**[Go to Product page](#)

## 5 Images

## Overview

Quantity:	100 µg
Target:	SNRPN
Binding Specificity:	N-Term
Reactivity:	Human, Mouse, Rat
Host:	Rabbit
Clonality:	Polyclonal
Conjugate:	This SNRPN antibody is un-conjugated
Application:	Western Blotting (WB), Immunohistochemistry (Paraffin-embedded Sections) (IHC (p)), Immunocytochemistry (ICC)

## Product Details

Immunogen:	An amino acid sequence from the N-terminus of human SNRPN (FKAFDKHNMNLILCDCDEF) was used as the immunogen for this SNRPN antibody (100% homologous in human, mouse and rat).
Isotype:	IgG
Purification:	Antigen affinity

## Target Details

Target:	SNRPN
Alternative Name:	SNRPN ( <a href="#">SNRPN Products</a> )
Background:	Small Nuclear Ribonucleoprotein Polypeptide N, also called SMN, is a bicistronic imprinted gene

## Target Details

---

that encodes 2 polypeptides, the SmN splicing factor, which is involved in RNA processing, and the SNRPN upstream reading frame (SNURF) polypeptide. The protein encoded by this gene is one polypeptide of a small nuclear ribonucleoprotein complex and belongs to the snRNP SMB/SMN family. SNRPN also encodes a long alternatively spliced transcript containing several small nucleolar RNAs(snoRNAs) and extends downstream to partially overlap the UBE3A gene in the antisense orientation. PWS arises from loss of function of genes in this region expressed exclusively from the paternal chromosome, suggesting that SNRPN may play a role in its etiology. The gene is mapped on 15q11.2. Analysis of maternal DNA and of SNRPN cDNA confirmed that the maternal allele is not expressed in fetal brain and heart. Deletions in the transcription unit of the imprinted gene occur in patients who have PWS or Angelman syndrome because of a parental imprint switch failure in this chromosomal domain.

---

UniProt: [P63162](#)

## Application Details

---

Application Notes: The stated application concentrations are suggested starting amounts. Titration of the SNRPN antibody may be required due to differences in protocols and secondary/substrate sensitivity.\.

Western blot: 0.5-1 µg/mL,IHC (Paraffin): 0.5-1 µg/mL,Immunocytochemistry: 0.5-1 µg/mL

---

Restrictions: For Research Use only

## Handling

---

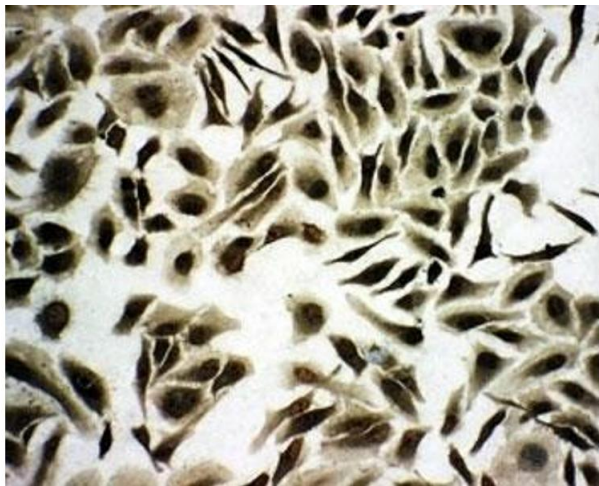
Buffer: 0.5 mg/mL if reconstituted with 0.2 mL sterile DI water

---

Storage: -20 °C

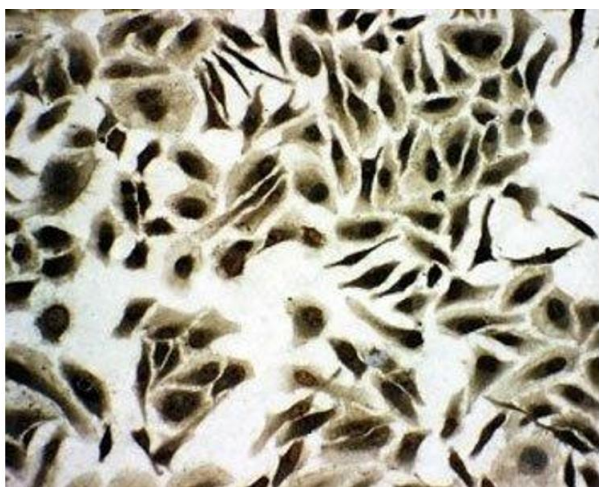
---

Storage Comment: After reconstitution, the SNRPN antibody can be stored for up to one month at 4°C. For long-term, aliquot and store at -20°C. Avoid repeated freezing and thawing.



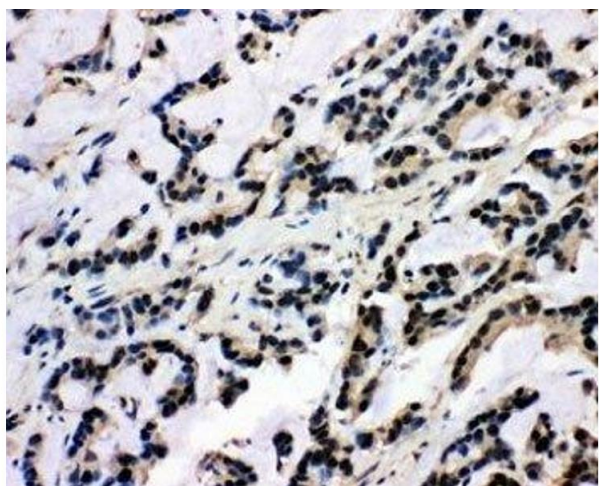
#### Immunocytochemistry

**Image 1.** ICC testing of SNRPN antibody and HeLa cells



#### Immunocytochemistry

**Image 2.** ICC testing of SNRPN antibody and HeLa cells



#### Immunohistochemistry

**Image 3.** IHC-P: SNRPN antibody testing of human intestinal cancer tissue

Please check the [product details page](#) for more images. Overall 5 images are available for ABIN3032638.