

Datasheet for ABIN3032647
anti-SUMO2 antibody



[Go to Product page](#)

3 Images

Overview

Quantity:	0.4 mL
Target:	SUMO2
Reactivity:	Human, Rat
Host:	Mouse
Clonality:	Monoclonal
Conjugate:	This SUMO2 antibody is un-conjugated
Application:	Western Blotting (WB), ELISA, Immunofluorescence (IF)

Product Details

Immunogen:	Purified His-tagged protein was used to produced this monoclonal SUMO-2 antibody.
Clone:	973CT8-1-1
Isotype:	IgG2b
Cross-Reactivity (Details):	Expected species reactivity: Bovine, Chicken, Hamster, Mouse, Pig, Primate
Purification:	Purified

Target Details

Target:	SUMO2
Alternative Name:	SUMO-2 (SUMO2 Products)
Background:	Ubiquitin-like protein that can be covalently attached to proteins as a monomer or as a lysine-linked polymer. Covalent attachment via an isopeptide bond to its substrates requires prior

Target Details

activation by the E1 complex SAE1-SAE2 and linkage to the E2 enzyme UBE2I, and can be promoted by an E3 ligase such as PIAS1-4, RANBP2 or CBX4. This post-translational modification on lysine residues of proteins plays a crucial role in a number of cellular processes such as nuclear transport, DNA replication and repair, mitosis and signal transduction. Polymeric SUMO2 chains are also susceptible to polyubiquitination which functions as a signal for proteasomal degradation of modified proteins.

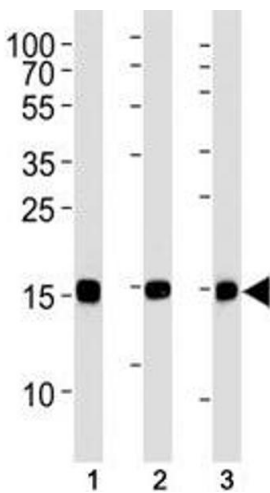
UniProt:	P61956
Pathways:	Methionine Biosynthetic Process

Application Details

Application Notes:	Titration of the SUMO-2 antibody may be required due to differences in protocols and secondary/substrate sensitivity.\. Immunofluorescence: 1:25,Western blot: 1:1000
Restrictions:	For Research Use only

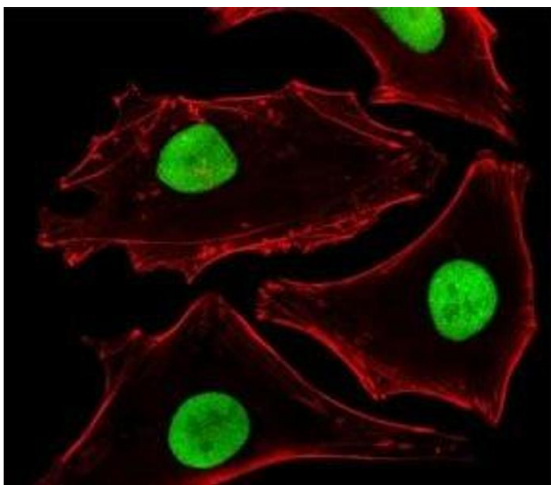
Handling

Format:	Liquid
Buffer:	In 1X PBS, pH 7.4, with 0.09 % sodium azide
Preservative:	Sodium azide
Precaution of Use:	This product contains Sodium azide: a POISONOUS AND HAZARDOUS SUBSTANCE which should be handled by trained staff only.
Storage:	-20 °C
Storage Comment:	Aliquot the SUMO-2 antibody and store frozen at -20°C or colder. Avoid repeated freeze-thaw cycles.



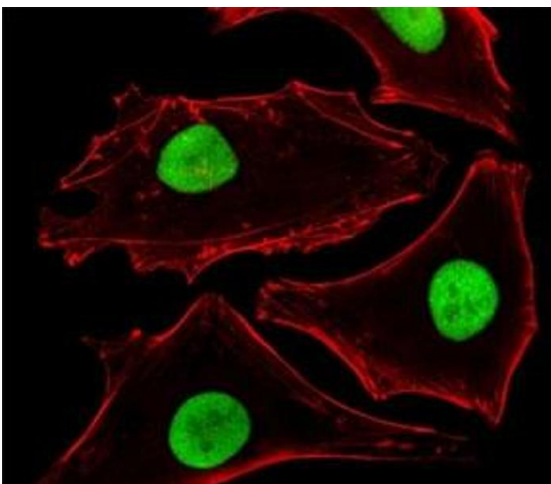
Western Blotting

Image 1. SUMO-2 antibody western blot analysis in (1) CEM, (2) 293, (3) rat C6 lysate. Observed molecular weight: 12-15 kDa.



Immunofluorescence

Image 2. Fluorescent image of HeLa cells stained with SUMO-2 antibody at 1:25 dilution. An Alexa Fluor 488-conjugated goat anti-mouse IgG was used as the secondary Ab (green). Cytoplasmic actin was counterstained with Alexa Fluor 555 conjugated with Phalloidin (re



Immunofluorescence

Image 3. Fluorescent image of HeLa cells stained with SUMO-2 antibody at 1:25 dilution. An Alexa Fluor 488-conjugated goat anti-mouse IgG was used as the secondary Ab (green). Cytoplasmic actin was counterstained with Alexa Fluor 555 conjugated with Phalloidin (red).