

Datasheet for ABIN3032648
anti-SUMO2 antibody (AA 63-93)[Go to Product page](#)

6 Images

Overview

Quantity:	0.4 mL
Target:	SUMO2
Binding Specificity:	AA 63-93
Reactivity:	Human
Host:	Rabbit
Clonality:	Polyclonal
Conjugate:	This SUMO2 antibody is un-conjugated
Application:	Western Blotting (WB), ELISA, Immunohistochemistry (IHC)

Product Details

Immunogen:	A portion of amino acids 63-93 from the human protein was used as the immunogen for this SUMO2 antibody.
Isotype:	Ig Fraction
Cross-Reactivity (Details):	Expected species reactivity: Mouse, Rat, Bovine, Pig, Primate, Chicken, Zebrafish, Hamster, Xenopus
Purification:	Purified

Target Details

Target:	SUMO2
Alternative Name:	SUMO2 (SUMO2 Products)

Target Details

Background: SUMO2 is a member of the SUMO (small ubiquitin-like modifier) protein family. This protein family functions in a manner similar to ubiquitin in that it is bound to target proteins as part of a post-translational modification system. However, unlike ubiquitin which targets proteins for degradation, this protein is involved in a variety of cellular processes, such as nuclear transport, transcriptional regulation, apoptosis, and protein stability. In vertebrates, three members of the SUMO family have been described, SUMO 1 and the functionally distinct homologues SUMO 2 and SUMO 3. SUMO modification sites present in the N terminal regions of SUMO 2 and SUMO 3 are utilized by SAE1/SAE2 (SUMO E1) and Ubc9 (SUMO E2) to form polymeric chains of SUMO 2 and SUMO 3 on protein substrates, a property not shared by SUMO 1.

UniProt: [P61956](#)

Pathways: [Methionine Biosynthetic Process](#)

Application Details

Application Notes: Titration of the SUMO2 antibody may be required due to differences in protocols and secondary/substrate sensitivity.\. Western blot: 1:1000,IHC (Paraffin): 1:50-1:100

Restrictions: For Research Use only

Handling

Format: Liquid

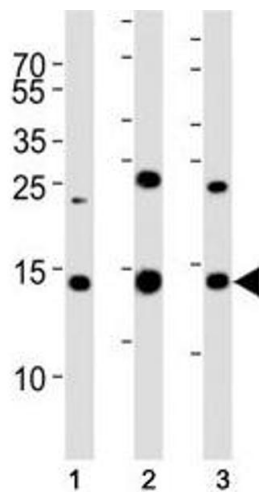
Buffer: In 1X PBS, pH 7.4, with 0.09 % sodium azide

Preservative: Sodium azide

Precaution of Use: This product contains Sodium azide: a POISONOUS AND HAZARDOUS SUBSTANCE which should be handled by trained staff only.

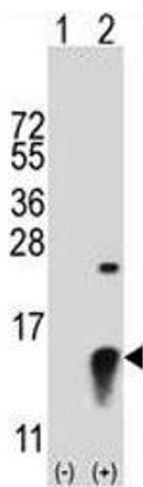
Storage: -20 °C

Storage Comment: Aliquot the SUMO2 antibody and store frozen at -20°C or colder. Avoid repeated freeze-thaw cycles.



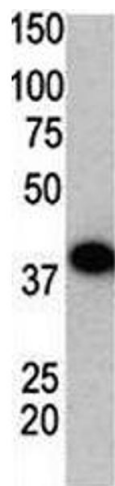
Western Blotting

Image 1. Western blot analysis of lysate from (1) 293T, (2) HL-60, (3) Jurkat cell line using SUMO2 antibody. Observed molecular weight: 12-15 kDa.



Western Blotting

Image 2. Western blot analysis of SUMO2 antibody and 293 cell lysate (2 ug/lane) either nontransfected (Lane 1) or transiently transfected (2) with the SUMO2 gene.



Western Blotting

Image 3. Western blot using SUMO2 antibody and GST-SUMO2 fusion protein.

Please check the [product details page](#) for more images. Overall 6 images are available for ABIN3032648.