

Datasheet for ABIN3032650  
**anti-SUMO2/3 antibody (AA 49-81)**



[Go to Product page](#)

14 Images

## Overview

Quantity:	0.4 mL
Target:	SUMO2/3
Binding Specificity:	AA 49-81
Reactivity:	Human, Mouse, Rat
Host:	Rabbit
Clonality:	Polyclonal
Conjugate:	This SUMO2/3 antibody is un-conjugated
Application:	Western Blotting (WB), Immunofluorescence (IF), ELISA, Immunohistochemistry (IHC)

## Product Details

Immunogen:	A portion of amino acids 49-81 from human SUMO3 was used as the immunogen for this SUMO2/3 antibody.
Isotype:	Ig Fraction
Cross-Reactivity (Details):	Expected species reactivity: Bovine, Chicken, Hamster, Pig, Primate, Rat, Xenopus, Zebrafish
Purification:	Purified

## Target Details

Target:	SUMO2/3
Alternative Name:	SUMO2/3 ( <a href="#">SUMO2/3 Products</a> )
Background:	SUMO2 and SUMO3 are members of the SUMO (small ubiquitin-like modifier) protein family.

## Target Details

This protein family functions in a manner similar to ubiquitin in that it is bound to target proteins as part of a post-translational modification system. However, unlike ubiquitin which targets proteins for degradation, this protein is involved in a variety of cellular processes, such as nuclear transport, transcriptional regulation, apoptosis, and protein stability. In vertebrates, three members of the SUMO family have been described, SUMO 1 and the functionally distinct homologues SUMO 2 and SUMO 3. SUMO modification sites present in the N terminal regions of SUMO 2 and SUMO 3 are utilized by SAE1/SAE2 (SUMO E1) and Ubc9 (SUMO E2) to form polymeric chains of SUMO 2 and SUMO 3 on protein substrates, a property not shared by SUMO 1.

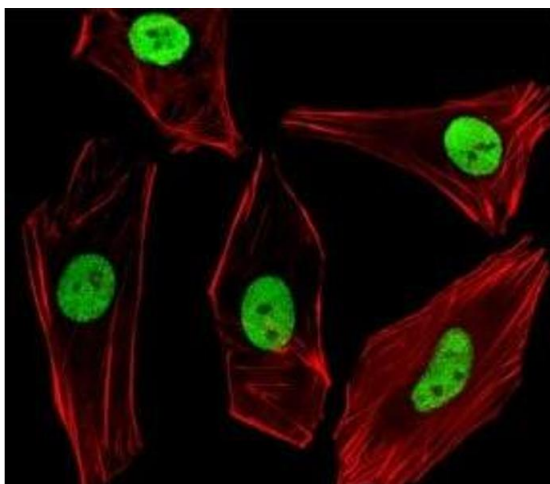
UniProt: [P55854](#)

## Application Details

Application Notes:	Titration of the SUMO2/3 antibody may be required due to differences in protocols and secondary/substrate sensitivity.\. Immunofluorescence: 1:25-100,Western blot: 1:1000,IHC (FFPE): 1:50-100
Restrictions:	For Research Use only

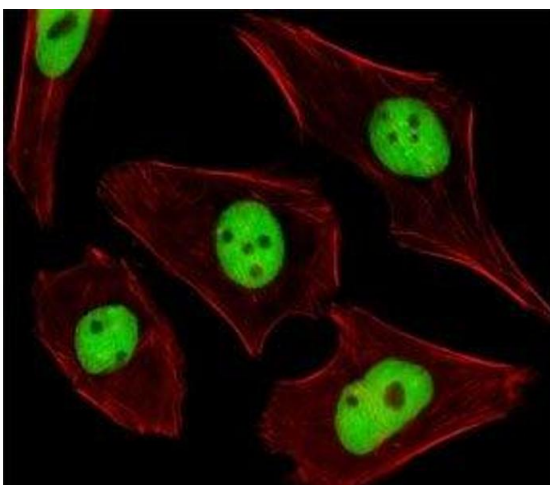
## Handling

Format:	Liquid
Buffer:	In 1X PBS, pH 7.4, with 0.09 % sodium azide
Preservative:	Sodium azide
Precaution of Use:	This product contains Sodium azide: a POISONOUS AND HAZARDOUS SUBSTANCE which should be handled by trained staff only.
Storage:	-20 °C
Storage Comment:	Aliquot the SUMO2/3 antibody and store frozen at -20°C or colder. Avoid repeated freeze-thaw cycles.



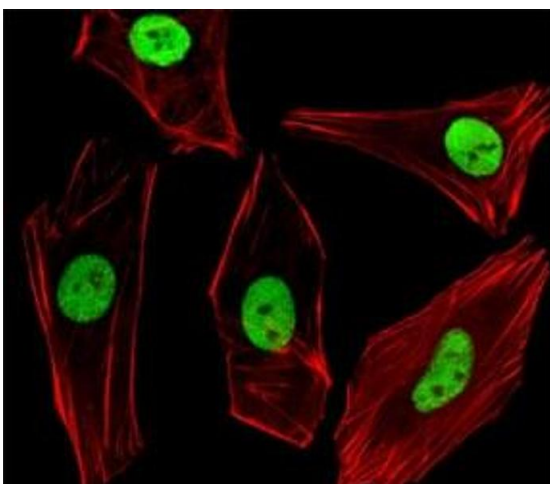
#### Immunofluorescence

**Image 1.** Fluorescent image of SH-SY5Y cells stained with SUMO2/3 antibody diluted at 1:100 dilution. An Alexa Fluor 488-conjugated goat anti-rabbit IgG was used as the secondary Ab (green). Cytoplasmic actin was counterstained with Alexa Fluor 555 conjugated with



#### Immunofluorescence

**Image 2.** Fluorescent image of U251 cells stained with SUMO2/3 antibody. Ab was diluted at 1:25 dilution. An Alexa Fluor 488-conjugated goat anti-rabbit IgG was used as the secondary (green). Cytoplasmic actin was counterstained with Alexa Fluor 555 conjugated with



#### Immunofluorescence

**Image 3.** Fluorescent image of SH-SY5Y cells stained with SUMO2/3 antibody diluted at 1:100 dilution. An Alexa Fluor 488-conjugated goat anti-rabbit IgG was used as the secondary Ab (green). Cytoplasmic actin was counterstained with Alexa Fluor 555 conjugated with Phalloidin (red).

Please check the [product details page](#) for more images. Overall 14 images are available for ABIN3032650.