

Datasheet for ABIN3032652
anti-SUMO3 antibody (AA 38-64)[Go to Product page](#)

2 Images

Overview

Quantity:	0.4 mL
Target:	SUMO3
Binding Specificity:	AA 38-64
Reactivity:	Human
Host:	Rabbit
Clonality:	Polyclonal
Application:	Western Blotting (WB), ELISA

Product Details

Immunogen:	A portion of amino acids 38-64 from the human protein was used as the immunogen for this SUMO-3 antibody.
Isotype:	Ig Fraction
Purification:	Purified

Target Details

Target:	SUMO3
Alternative Name:	SUMO-3 (SUMO3 Products)
Background:	<p>SUMO2 and SUMO3 are members of the SUMO (small ubiquitin-like modifier) protein family. This protein family functions in a manner similar to ubiquitin in that it is bound to target proteins as part of a post-translational modification system. However, unlike ubiquitin which targets proteins for degradation, this protein is involved in a variety of cellular processes, such</p>

Target Details

as nuclear transport, transcriptional regulation, apoptosis, and protein stability. In vertebrates, three members of the SUMO family have been described, SUMO 1 and the functionally distinct homologues SUMO 2 and SUMO 3. SUMO modification sites present in the N terminal regions of SUMO 2 and SUMO 3 are utilized by SAE1/SAE2 (SUMO E1) and Ubc9 (SUMO E2) to form polymeric chains of SUMO 2 and SUMO 3 on protein substrates, a property not shared by SUMO 1.

UniProt: [P55854](#)

Application Details

Application Notes:	Titration of the SUMO-3 antibody may be required due to differences in protocols and secondary/substrate sensitivity.\. Western blot: 1:1000
Restrictions:	For Research Use only

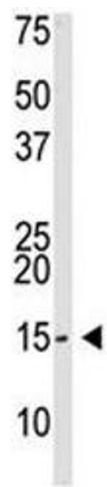
Handling

Format:	Liquid
Buffer:	In 1X PBS, pH 7.4, with 0.09 % sodium azide
Preservative:	Sodium azide
Precaution of Use:	This product contains Sodium azide: a POISONOUS AND HAZARDOUS SUBSTANCE which should be handled by trained staff only.
Storage:	-20 °C
Storage Comment:	Aliquot the SUMO-3 antibody and store frozen at -20°C or colder. Avoid repeated freeze-thaw cycles.



Western Blotting

Image 1. SUMO-3 antibody used in western blot to detect SUMO3 in Saos-2 cell lysate



Western Blotting

Image 2. SUMO-3 antibody used in western blot to detect SUMO3 in Saos-2 cell lysate