

Datasheet for ABIN3032653

anti-SUMO4 antibody

5 Images

[Go to Product page](#)

Overview

Quantity:	0.4 mL
Target:	SUMO4
Reactivity:	Human
Host:	Rabbit
Clonality:	Polyclonal
Conjugate:	This SUMO4 antibody is un-conjugated
Application:	Western Blotting (WB), Immunohistochemistry (IHC), ELISA

Product Details

Immunogen:	This SUMO4 antibody was produced from rabbits immunized with a KLH conjugated synthetic peptide selected from the center region of human SUMO4.
Isotype:	Ig Fraction
Purification:	Antigen affinity purified

Target Details

Target:	SUMO4
Alternative Name:	SUMO4 (SUMO4 Products)
Background:	Ubiquitin-like protein which can be covalently attached to target lysines as a monomer. Does not seem to be involved in protein degradation and may modulate protein subcellular localization, stability or activity. Upon oxidative stress, conjugates to various anti-oxidant enzymes, chaperones, and stress defense proteins. May also conjugate to NFKBIA, TFAP2A

Target Details

and FOS, negatively regulating their transcriptional activity, and to NR3C1, positively regulating its transcriptional activity. Covalent attachment to its substrates requires prior activation by the E1 complex SAE1-SAE2 and linkage to the E2 enzyme UBE2I. [UniProt]

UniProt: [Q6EEV6](#)

Application Details

Application Notes: Titration of the SUMO4 antibody may be required due to differences in protocols and secondary/substrate sensitivity.\. IHC (Paraffin): 1:50-1:100,Western blot: 1:1000

Restrictions: For Research Use only

Handling

Format: Liquid

Buffer: In 1X PBS, pH 7.4, with 0.09 % sodium azide

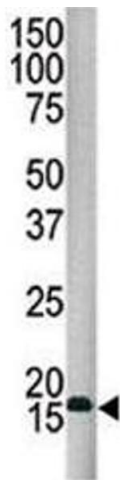
Preservative: Sodium azide

Precaution of Use: This product contains Sodium azide: a POISONOUS AND HAZARDOUS SUBSTANCE which should be handled by trained staff only.

Storage: -20 °C

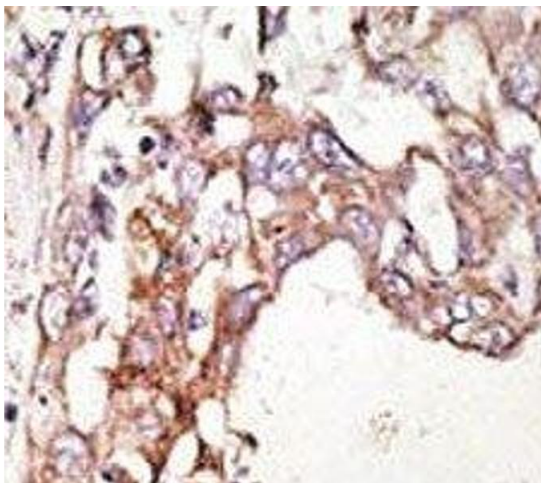
Storage Comment: Aliquot the SUMO4 antibody and store frozen at -20°C or colder. Avoid repeated freeze-thaw cycles.

Images



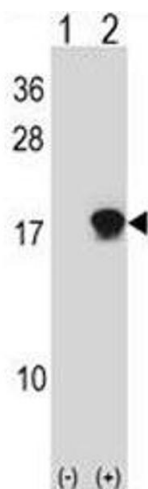
Western Blotting

Image 1. Western blot analysis of SUMO4 antibody and HepG2 lysate. Observed molecular weight: 11-15 kDa.



Immunohistochemistry

Image 2. IHC analysis of FFPE human hepatocarcinoma stained with the SUMO4 antibody



Western Blotting

Image 3. Western blot analysis of SUMO4 antibody and 293 cell lysate either nontransfected (Lane 1) or transiently transfected (2) with the SUMO4 gene.

Please check the [product details page](#) for more images. Overall 5 images are available for ABIN3032653.