

Datasheet for ABIN3032655
anti-SUMO4 antibody (Met55Val-Mutant)[Go to Product page](#)

3 Images

Overview

Quantity:	0.4 mL
Target:	SUMO4
Binding Specificity:	Met55Val-Mutant
Reactivity:	Human
Host:	Rabbit
Clonality:	Polyclonal
Conjugate:	This SUMO4 antibody is un-conjugated
Application:	Western Blotting (WB), Immunohistochemistry (IHC), ELISA

Product Details

Immunogen:	This SUMO4 antibody was produced from rabbits immunized with a KLH conjugated peptide CEPRGLS(V)KQIRFRFG selected from human SUMO4. This antibody is affinity purified using peptides CEPRGLS(V)KQIRFRFG (positive selection) and CEPRGLS(M)KQIRFRFG (negative selection).
Isotype:	Ig Fraction
Purification:	Antigen affinity purified

Target Details

Target:	SUMO4
Alternative Name:	SUMO4 (SUMO4 Products)
Background:	SUMO4 is a member of the SUMO gene family. This family of small ubiquitin-related modifiers

Target Details

covalently modify target lysines in proteins and control the target proteins' subcellular localization, stability, or activity. Upon oxidative stress, SUMO4 conjugates to various anti-oxidant enzymes, chaperones, and stress defense proteins. This protein may also conjugate to NFKBIA, TFAP2A and FOS, negatively regulating their transcriptional activity, and to NR3C1, positively regulating its transcriptional activity. Covalent attachment to SUMO4 substrates requires prior activation by the E1 complex SAE1-SAE2 and linkage to the E2 enzyme UBE2I. In contrast to SUMO1, SUMO2 and SUMO3, SUMO4 seems to be insensitive to sentrin-specific proteases due to the presence of Pro-90. This may impair processing to mature form and conjugation to substrates. SUMO4 is located in the cytoplasm and specifically modifies IKBA, leading to negative regulation of NF-kappa-B-dependent transcription of the IL12B gene. The M55V substitution has been associated with type I diabetes.

UniProt: [Q6EEV6](#)

Application Details

Application Notes: Titration of the SUMO4 antibody may be required due to differences in protocols and secondary/substrate sensitivity.\. Western blot: 1:1000,IHC (Paraffin): 1:50-1:100

Restrictions: For Research Use only

Handling

Format: Liquid

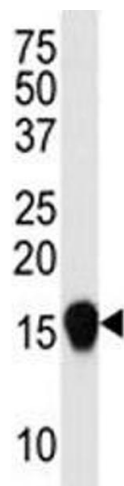
Buffer: In 1X PBS, pH 7.4, with 0.09 % sodium azide

Preservative: Sodium azide

Precaution of Use: This product contains Sodium azide: a POISONOUS AND HAZARDOUS SUBSTANCE which should be handled by trained staff only.

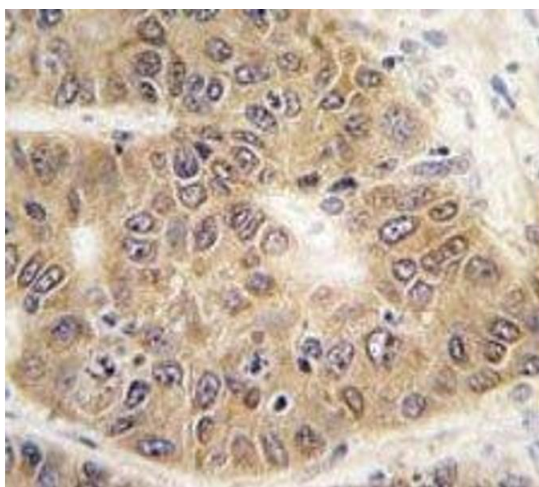
Storage: -20 °C

Storage Comment: Aliquot the SUMO4 antibody and store frozen at -20°C or colder. Avoid repeated freeze-thaw cycles.



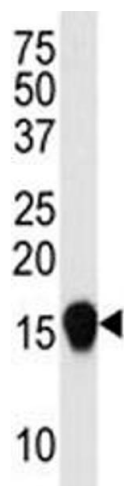
Western Blotting

Image 1. Western blot analysis of SUMO4 antibody (V55 Mutant) in HepG2 lysate. Observed molecular weight: 11-15 kDa.



Immunohistochemistry

Image 2. IHC analysis of FFPE human hepatocarcinoma tissue stained with SUMO4 antibody



Western Blotting

Image 3. Western blot analysis of SUMO4 antibody (V55 Mutant) in HepG2 lysate. Observed molecular weight: 11-15 kDa.