

Datasheet for ABIN3032658
anti-SLUG antibody (AA 98-129)[Go to Product page](#)

6 Images

Overview

| | |
|----------------------|-----------------------------------------------------------------------------------|
| Quantity: | 0.4 mL |
| Target: | SLUG (SNAI2) |
| Binding Specificity: | AA 98-129 |
| Reactivity: | Human, Mouse |
| Host: | Rabbit |
| Clonality: | Polyclonal |
| Conjugate: | This SLUG antibody is un-conjugated |
| Application: | Western Blotting (WB), ELISA, Immunohistochemistry (IHC), Immunofluorescence (IF) |

Product Details

| | |
|-----------------------------|----------------------------------------------------------------------------------------------------|
| Immunogen: | A portion of amino acids 98-129 from human SNAI2 was used as the immunogen for this SLUG antibody. |
| Isotype: | Ig Fraction |
| Cross-Reactivity (Details): | Expected species reactivity: Bovine |
| Purification: | Purified |

Target Details

| | |
|-------------------|------------------------------------------------------------------------------------------------|
| Target: | SLUG (SNAI2) |
| Alternative Name: | SLUG (SNAI2) (SNAI2 Products) |
| Background: | SLUG/SNAI2 is a member of the Snail family of C2H2-type zinc finger transcription factors. The |

Target Details

encoded protein acts as a transcriptional repressor that binds to E-box motifs and is also likely to repress < a href=../search_result.php?search_txt=e cadherin>E-cadherin transcription in breast carcinoma. This protein is involved in epithelial-mesenchymal transitions and has antiapoptotic activity. Mutations in this gene may be associated with sporadic cases of neural tube defects. [Wiki]

UniProt: [O43623](#)

Application Details

Application Notes: Titration of the SLUG antibody may be required due to differences in protocols and secondary/substrate sensitivity.\. Western blot: 1:1000,IHC (Paraffin): 1:10-1:50,Immunofluorescence: 1:10-1:50

Restrictions: For Research Use only

Handling

Format: Liquid

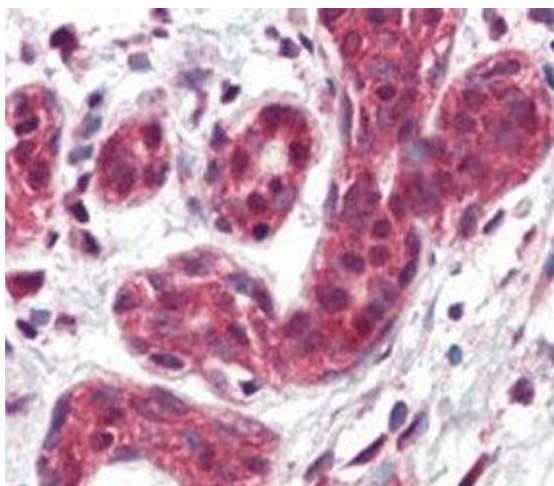
Buffer: In 1X PBS, pH 7.4, with 0.09 % sodium azide

Preservative: Sodium azide

Precaution of Use: This product contains Sodium azide: a POISONOUS AND HAZARDOUS SUBSTANCE which should be handled by trained staff only.

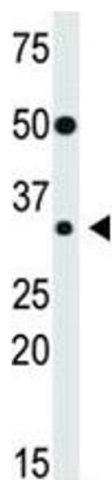
Storage: -20 °C

Storage Comment: Aliquot the SLUG antibody and store frozen at -20°C or colder. Avoid repeated freeze-thaw cycles.



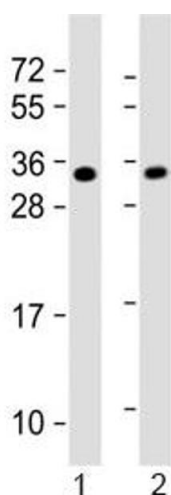
Immunohistochemistry

Image 1. IHC analysis of FFPE human breast tissue stained with SLUG antibody



Western Blotting

Image 2. Western blot testing of SLUG antibody and mouse heart lysate. Predicted size ~30 kDa



Western Blotting

Image 3. Western blot testing of 1) mouse heart and 2) rat PC-12 lysate with SLUG antibody. Predicted molecular weight ~30 kDa.

Please check the [product details page](#) for more images. Overall 6 images are available for ABIN3032658.