

Datasheet for ABIN3032668
anti-SLC10A1 antibody (AA 141-154)[Go to Product page](#)

3 Images

Overview

Quantity:	100 µg
Target:	SLC10A1
Binding Specificity:	AA 141-154
Reactivity:	Human, Mouse, Rat
Host:	Rabbit
Clonality:	Polyclonal
Conjugate:	This SLC10A1 antibody is un-conjugated
Application:	Western Blotting (WB), Immunohistochemistry (Paraffin-embedded Sections) (IHC (p))

Product Details

Immunogen:	Amino acids 141-154 (YSRGIYDGLKDKV-human) were used as the immunogen for this SLC10A1 antibody.
Isotype:	IgG
Purification:	Antigen affinity

Target Details

Target:	SLC10A1
Alternative Name:	SLC10A1 (SLC10A1 Products)
Background:	SLC10A1 (Solute carrier family 10 (sodium/bile acid cotransporter family), member 1), also called NTCP or NTCP1, is found in the basolateral membranes of hepatocytes, which is also involved in the reabsorption of bile acids. The SLC10A1 gene is mapped on 14q24.2 and

Target Details

contains 5 exons and spans about 23 kb. Like other sodium/bile acid transporters, SLC10A1 contains an exoplasmic N terminus, an odd number of transmembrane regions, and a cytoplasmic C terminus. Two amphipathic sequences are critical for intramolecular interactions and for proper trafficking of SLC10A1 to the plasma membrane. Injection of in vitro transcribed NTCP cRNA into *Xenopus* oocytes resulted in the expression of Na(+)-dependent taurocholate uptake. NTCP-mediated taurocholate uptake in oocytes was inhibited by all major bile acid derivatives and by bromosulphophthalein.

UniProt: [Q14973](#)

Application Details

Application Notes: Titration of the SLC10A1 antibody may be required due to differences in protocols and secondary/substrate sensitivity.\. Western blot: 0.5-1 µg/mL,IHC (Paraffin): 0.5-1 µg/mL

Restrictions: For Research Use only

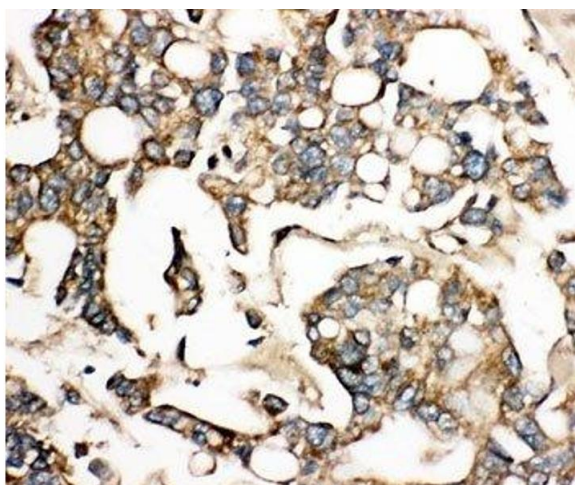
Handling

Buffer: 0.5 mg/mL if reconstituted with 0.2 mL sterile DI water

Storage: -20 °C

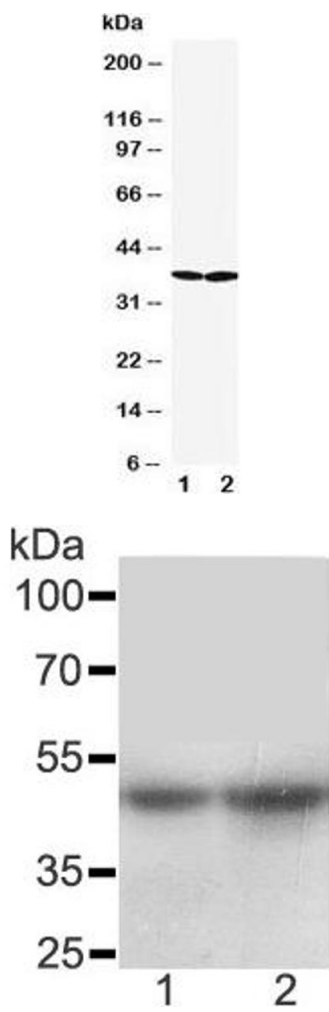
Storage Comment: The lyophilized SLC10A1 antibody can be stored at 4°C to -20°C. After reconstitution, aliquot and store at -20°C. Avoid repeated freezing and thawing.

Images



Immunohistochemistry

Image 1. IHC-P: SLC10A1 antibody testing of human liver cancer tissue



Western Blotting

Image 2. Western blot testing of SLC10A1 antibody and
Lane 1: rat liver; 2: rat brain lysate

Western Blotting

Image 3. Western blot testing of SLC10A1 antibody and
Lane 1: rat liver