

Datasheet for ABIN3032676
anti-GLUT12 antibody (AA 256-272)[Go to Product page](#)

2 Images

Overview

Quantity:	100 µg
Target:	GLUT12 (SLC2A12)
Binding Specificity:	AA 256-272
Reactivity:	Human, Mouse, Rat
Host:	Rabbit
Clonality:	Polyclonal
Conjugate:	This GLUT12 antibody is un-conjugated
Application:	Western Blotting (WB)

Product Details

Immunogen:	Amino acids 256-272 (SLKDEYQYSFWDLFRSK) were used as the immunogen for this GLUT12 antibody (100% homologous in human, mouse and rat).
Isotype:	IgG
Purification:	Antigen affinity

Target Details

Target:	GLUT12 (SLC2A12)
Alternative Name:	GLUT12 (SLC2A12 Products)
Background:	GLUT12, also called Solute carrier family 2, facilitated glucose transporter member 12, is a protein that in humans is encoded by the SLC2A12 gene. It belongs to a family of transporters that catalyze the uptake of sugars through facilitated diffusion. This family of transporters

Target Details

shows conservation of 12 transmembrane helices as well as functionally significant amino acid residues. By genomic sequence analysis, this gene is mapped to chromosome 6q23.2. GLUT12 was detected in a perinuclear location in MCF7 cells in the absence of insulin, however, it redistributed to the plasma membrane of MCF7 cells grown continuously in the presence of insulin.

UniProt: [Q8TD20](#)

Pathways: [Warburg Effect](#)

Application Details

Application Notes: The stated application concentrations are suggested starting points. Titration of the GLUT12 antibody may be required due to differences in protocols and secondary/substrate sensitivity.\.
Western blot: 0.5-1 µg/mL

Restrictions: For Research Use only

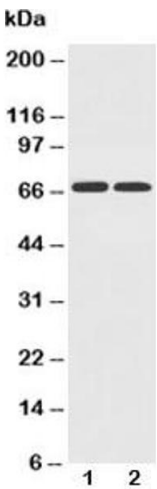
Handling

Buffer: 0.5 mg/mL if reconstituted with 0.2 mL sterile DI water

Storage: -20 °C

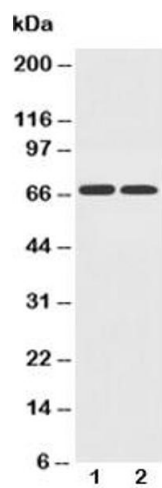
Storage Comment: After reconstitution, the GLUT12 antibody can be stored for up to one month at 4°C. For long-term, aliquot and store at -20°C. Avoid repeated freezing and thawing.

Images



Western Blotting

Image 1. Western blot testing of GLUT12 antibody and Lane 1: PC-12; 2: A549 cell lysate



Western Blotting

Image 2. Western blot testing of GLUT12 antibody and Lane 1: PC-12