

Datasheet for ABIN3032677
anti-GLUT4 antibody (AA 491-509)



[Go to Product page](#)

3 Images

Overview

Quantity:	100 µg
Target:	GLUT4 (SLC2A4)
Binding Specificity:	AA 491-509
Reactivity:	Human, Mouse, Rat
Host:	Rabbit
Clonality:	Polyclonal
Conjugate:	This GLUT4 antibody is un-conjugated
Application:	Western Blotting (WB), Immunohistochemistry (Paraffin-embedded Sections) (IHC (p))

Product Details

Immunogen:	Amino acids 491-509 (EQEVKPSTELEYLGPDEND) were used as the immunogen for this GLUT4 antibody (100% homologous in human, mouse and rat).
Isotype:	IgG
Purification:	Antigen affinity

Target Details

Target:	GLUT4 (SLC2A4)
Alternative Name:	GLUT4 (Glucose Transporter 4) (SLC2A4 Products)
Background:	Facilitated glucose transport by mammalian cells is not a property of a single protein but an activity associated with a family of structurally related proteins. Glucose transporter 4 is a insulin-responsive glucose transporter. It belongs to solute carrier family 2, member 1. Insulin

Target Details

alters the subcellular localization of GLUT4 vesicles in human muscle, and that this effect is impaired equally in insulin-resistant subjects with and without diabetes. A similar pattern of defects cause insulin resistance in human adipocytes. Human insulin resistance involves a defect in GLUT4 traffic and targeting leading to accumulation in a dense membrane compartment from which insulin is unable to recruit GLUT4 to the cell surface.

UniProt: [P14672](#)

Pathways: [AMPK Signaling](#), [Carbohydrate Homeostasis](#), [Proton Transport](#), [Brown Fat Cell Differentiation](#), [Warburg Effect](#)

Application Details

Application Notes: The stated application concentrations are suggested starting points. Titration of the GLUT4 antibody may be required due to differences in protocols and secondary/substrate sensitivity.\. Western blot: 0.5-1 µg/mL, IHC (Paraffin): 0.5-1 µg/mL

Restrictions: For Research Use only

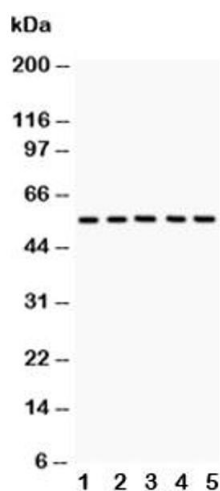
Handling

Buffer: 0.5 mg/mL if reconstituted with 0.2 mL sterile DI water

Storage: -20 °C

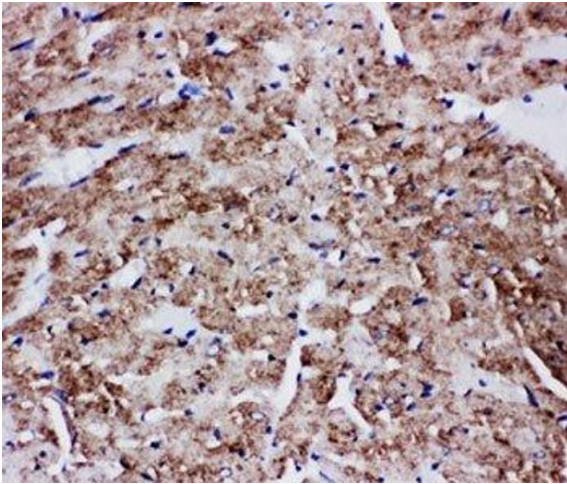
Storage Comment: After reconstitution, the GLUT4 antibody can be stored for up to one month at 4°C. For long-term, aliquot and store at -20°C. Avoid repeated freezing and thawing.

Images



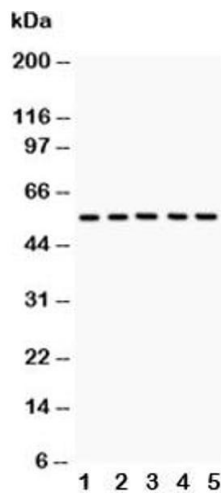
Western Blotting

Image 1. Western blot testing of GLUT4 antibody and Lane 1: rat heart



Immunohistochemistry

Image 2. IHC-P: GLUT4 antibody testing of rat heart tissue



Western Blotting

Image 3. Western blot testing of GLUT4 antibody and Lane 1: rat heart; 2: rat skeletal muscle; 3: mouse heart; 4: mouse skeletal muscle; 5: human HeLa lysate