

Datasheet for ABIN3032680
anti-SLC2A5 antibody (AA 481-501)



[Go to Product page](#)

2 Images

Overview

Quantity:	100 µg
Target:	SLC2A5
Binding Specificity:	AA 481-501
Reactivity:	Human
Host:	Rabbit
Clonality:	Polyclonal
Conjugate:	This SLC2A5 antibody is un-conjugated
Application:	Western Blotting (WB)

Product Details

Immunogen:	Amino acids 481-501 (VSEVYPEKEELKELPPVTSEQ-human) were used as the immunogen for this GLUT5 antibody.
Isotype:	IgG
Purification:	Antigen affinity

Target Details

Target:	SLC2A5
Alternative Name:	GLUT5 (Glucose Transporter 5) (SLC2A5 Products)
Background:	SLC2A5, also known as Glucose transporter 5, is a fructose transporter expressed on the apical border of enterocytes in the small intestine. The gene is located on chromosome 1. The protein allows for fructose to be transported from the intestinal lumen into the enterocyte by facilitated

Target Details

diffusion due to fructoses high concentration in the intestinal lumen. GLUT5 is also expressed in skeletal muscle, testis, kidney, fat tissue, and brain. Along with GLUT7, -9 and -11, GLUT5 is a class II glucose transporter family member. Fructose malabsorption or Dietary Fructose Intolerance is a dietary disability of the small intestine, where the amount of fructose carrier in enterocytes is deficient.

UniProt: [P22732](#)

Application Details

Application Notes: The stated application concentrations are suggested starting points. Titration of the GLUT5 antibody may be required due to differences in protocols and secondary/substrate sensitivity.\.
Western blot: 0.5-1 µg/mL

Restrictions: For Research Use only

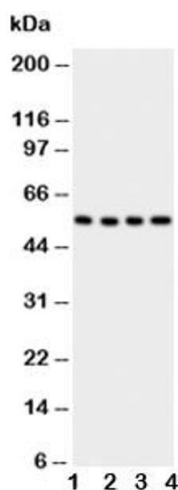
Handling

Buffer: 0.5 mg/mL if reconstituted with 0.2 mL sterile DI water

Storage: -20 °C

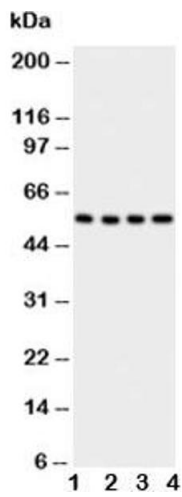
Storage Comment: After reconstitution, the GLUT5 antibody can be stored for up to one month at 4°C. For long-term, aliquot and store at -20°C. Avoid repeated freezing and thawing.

Images



Western Blotting

Image 1. Western blot testing of Glut5 antibody



Western Blotting

Image 2. Western blot testing of Glut5 antibody; Lane 1: U87; 2: 293T; 3: HT1080; 4: SW620 cell lysate