

Datasheet for ABIN3032684
anti-SLC22A6 antibody (AA 534-550)[Go to Product page](#)

3 Images

Overview

Quantity:	100 µg
Target:	SLC22A6
Binding Specificity:	AA 534-550
Reactivity:	Human, Rat
Host:	Rabbit
Clonality:	Polyclonal
Conjugate:	This SLC22A6 antibody is un-conjugated
Application:	Western Blotting (WB), Immunohistochemistry (Paraffin-embedded Sections) (IHC (p))

Product Details

Immunogen:	Amino acids 534-550 (QKYMVPLQASAEKNGL-human) were used as the immunogen for this SLC22A6 antibody.
Isotype:	IgG
Purification:	Antigen affinity

Target Details

Target:	SLC22A6
Alternative Name:	SLC22A6 (SLC22A6 Products)
Background:	Solute carrier family 22 (organic anion transporter), member 6, also called OAT1 or PAHT, is a protein that in humans is encoded by the SLC22A6 gene, which is also a member of the organic anion transporter (OAT) family of proteins. It is a transmembrane protein that is expressed in

Target Details

the brain, the placenta, the eyes, smooth muscles, and the basolateral membrane of proximal tubular cells of the kidneys. It plays a central role in renal organic anion transport. Along with OAT3, OAT1/SLC22A6 mediates the uptake of a wide range of relatively small and hydrophilic organic anions from plasma into the cytoplasm of the proximal tubular cells of the kidneys. The protein functions as organic anion exchanger. When the uptake of one molecule of an organic anion is transported into a cell by an SLC22A6 exchanger, one molecule of an endogenous dicarboxylic acid (such as glutarate, ketoglutarate, etc) is simultaneously transported out of the cell.

UniProt: [Q4U2R8](#)

Pathways: [Dicarboxylic Acid Transport](#)

Application Details

Application Notes: The stated application concentrations are suggested starting amounts. Titration of the SLC22A6 antibody may be required due to differences in protocols and secondary/substrate sensitivity. Western blot: 0.5-1 µg/mL, IHC (Paraffin): 0.5-1 µg/mL

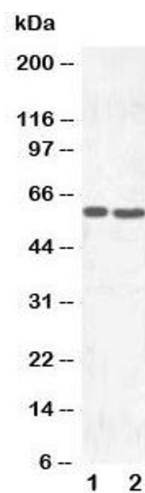
Restrictions: For Research Use only

Handling

Buffer: 0.5 mg/mL if reconstituted with 0.2 mL sterile DI water

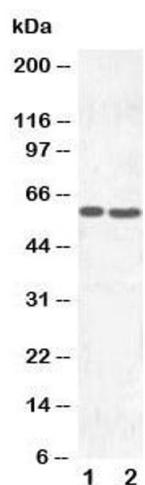
Storage: -20 °C

Storage Comment: After reconstitution, the SLC22A6 antibody can be stored for up to one month at 4°C. For long-term, aliquot and store at -20°C. Avoid repeated freezing and thawing.



Western Blotting

Image 1. Western blot testing of SLC22A6 antibody and
Lane 1: HT1080; 2: HeLa cell lysate



Western Blotting

Image 2. Western blot testing of SLC22A6 antibody and
Lane 1: HT1080



Immunohistochemistry

Image 3. IHC-P: SLC22A6 antibody testing of rat kidney
tissue