



[Go to Product page](#)

Datasheet for ABIN3032699

anti-SOX4 antibody (AA 86-114)

6 Images

Overview

Quantity:	0.4 mL
Target:	SOX4
Binding Specificity:	AA 86-114
Reactivity:	Human
Host:	Rabbit
Clonality:	Polyclonal
Conjugate:	This SOX4 antibody is un-conjugated
Application:	Western Blotting (WB), ELISA, Immunohistochemistry (IHC), Immunofluorescence (IF), Flow Cytometry (FACS)

Product Details

Immunogen:	A portion of amino acids 86-114 from the human protein was used as the immunogen for this SOX4 antibody.
Isotype:	Ig Fraction
Purification:	Purified

Target Details

Target:	SOX4
Alternative Name:	SOX4 (SOX4 Products)
Background:	SOX4 is a member of the SOX (SRY-related HMG-box) family of transcription factors involved in the regulation of embryonic development and in the determination of the cell fate. The protein

Target Details

may act as a transcriptional regulator after forming a protein complex with other proteins, such as syndecan binding protein (syntenin). The protein may function in the apoptosis pathway leading to cell death as well as to tumorigenesis and may mediate downstream effects of parathyroid hormone (PTH) and PTH-related protein (PTHrP) in bone development. The solution structure has been resolved for the HMG-box of a similar mouse protein.

UniProt: [Q06945](#)

Application Details

Application Notes: Titration of the SOX4 antibody may be required due to differences in protocols and secondary/substrate sensitivity.\. Western blot: 1:1000,IHC (Paraffin): 1:50-1:100,Flow Cytometry: 1:10-1:50,Immunofluorescence: 1:10-1:50

Restrictions: For Research Use only

Handling

Format: Liquid

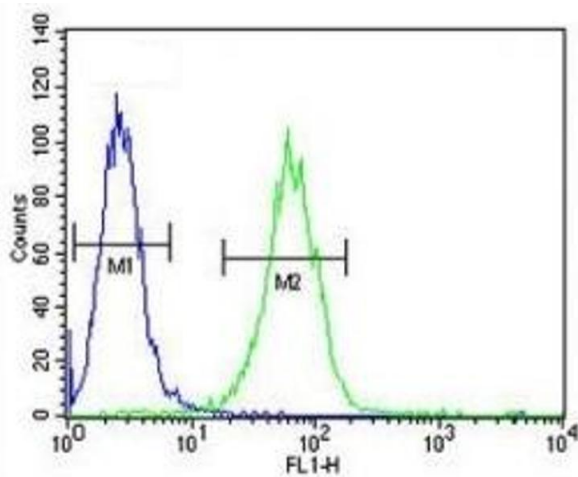
Buffer: In 1X PBS, pH 7.4, with 0.09 % sodium azide

Preservative: Sodium azide

Precaution of Use: This product contains Sodium azide: a POISONOUS AND HAZARDOUS SUBSTANCE which should be handled by trained staff only.

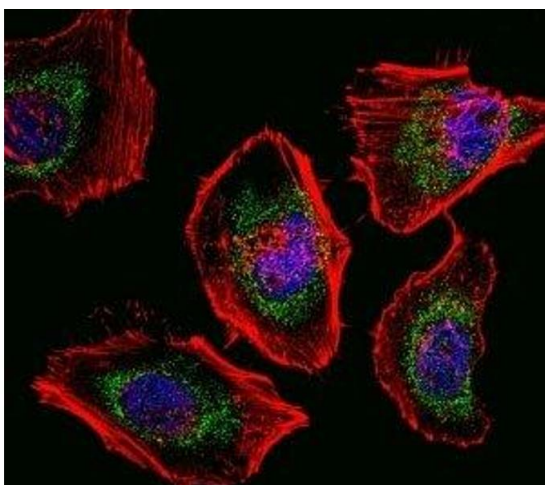
Storage: -20 °C

Storage Comment: Aliquot the SOX4 antibody and store frozen at -20°C or colder. Avoid repeated freeze-thaw cycles.



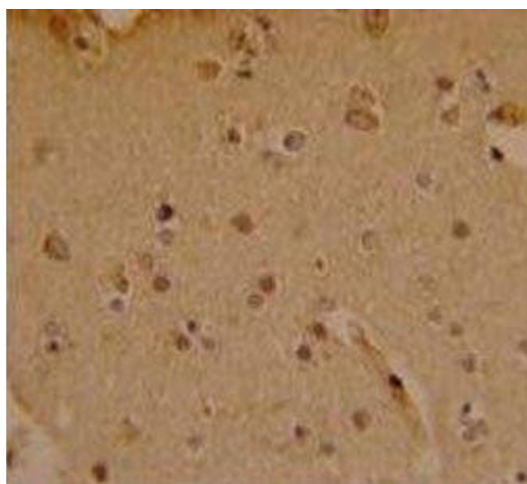
Flow Cytometry

Image 1. SOX4 antibody flow cytometric analysis of A2058 cells (green) compared to a



Immunofluorescence

Image 2. Fluorescent confocal image of HeLa cells stained with SOX4 antibody. Alexa Fluor 488 conjugated secondary (green) was used. SOX4 immunoreactivity is localized to mitochondria strongly and nucleus weakly.



Immunohistochemistry

Image 3. IHC analysis of FFPE human brain stained with SOX4 antibody

Please check the [product details page](#) for more images. Overall 6 images are available for ABIN3032699.