

Datasheet for ABIN3032701
anti-SP1 antibody (AA 677-707)[Go to Product page](#)

7 Images

Overview

Quantity:	0.4 mL
Target:	SP1
Binding Specificity:	AA 677-707
Reactivity:	Human
Host:	Rabbit
Clonality:	Polyclonal
Conjugate:	This SP1 antibody is un-conjugated
Application:	Western Blotting (WB), ELISA, Immunohistochemistry (IHC), Immunofluorescence (IF), Flow Cytometry (FACS)

Product Details

Immunogen:	A portion of amino acids 677-707 from the human protein was used as the immunogen for this SP1 antibody.
Isotype:	Ig Fraction
Cross-Reactivity (Details):	Expected species reactivity: Mouse, Rat
Purification:	Antigen affinity purified

Target Details

Target:	SP1
Alternative Name:	SP1 (SP1 Products)

Target Details

Background: Transcription factor that can activate or repress transcription in response to physiological and pathological stimuli. Binds with high affinity to GC-rich motifs and regulates the expression of a large number of genes involved in a variety of processes such as cell growth, apoptosis, differentiation and immune responses. Highly regulated by post-translational modifications (phosphorylations, sumoylation, proteolytic cleavage, glycosylation and acetylation). Binds also the PDGFR-alpha G-box promoter. May have a role in modulating the cellular response to DNA damage. Implicated in chromatin remodeling. Plays a role in the recruitment of SMARCA4/BRG1 on the c-FOS promoter. Plays an essential role in the regulation of FE65 gene expression. [UniProt]

UniProt: [P08047](#)

Pathways: [Regulation of Lipid Metabolism by PPARalpha](#), [Myometrial Relaxation and Contraction](#)

Application Details

Application Notes: Titration of the SP1 antibody may be required due to differences in protocols and secondary/substrate sensitivity.\. Western blot: 1:1000,IHC (Paraffin): 1:50-1:100,Flow Cytometry: 1:10-1:50,Immunofluorescence: 1:10-1:50

Restrictions: For Research Use only

Handling

Format: Liquid

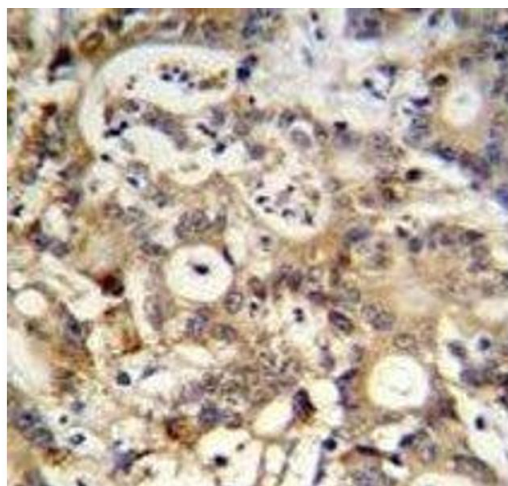
Buffer: In 1X PBS, pH 7.4, with 0.09 % sodium azide

Preservative: Sodium azide

Precaution of Use: This product contains Sodium azide: a POISONOUS AND HAZARDOUS SUBSTANCE which should be handled by trained staff only.

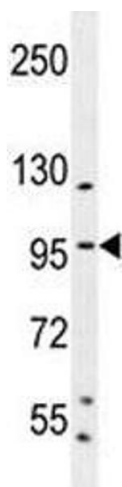
Storage: -20 °C

Storage Comment: Aliquot the SP1 antibody and store frozen at -20°C or colder. Avoid repeated freeze-thaw cycles.



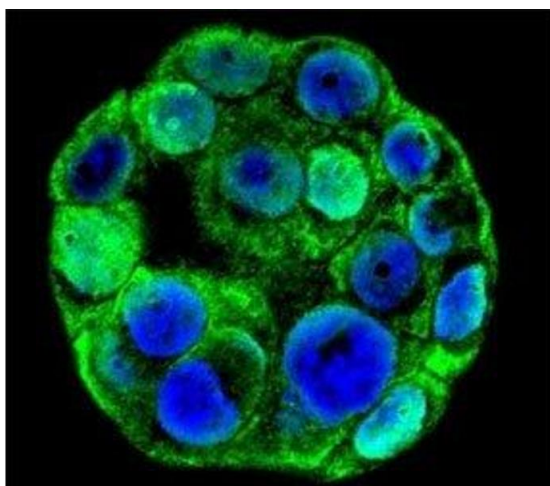
Immunohistochemistry

Image 1. SP1 antibody immunohistochemistry analysis in formalin fixed and paraffin embedded human colon carcinoma.



Western Blotting

Image 2. SP1 antibody western blot analysis in K562 lysate. Reported molecular weight: 81-95 kDa



Immunofluorescence

Image 3. Confocal immunofluorescent analysis of SP1 antibody with WiDr cells followed by Alexa Fluor 488-conjugated goat anti-rabbit IgG (green). DAPI was used as a nuclear counterstain (blue).

Please check the [product details page](#) for more images. Overall 7 images are available for ABIN3032701.