

Datasheet for ABIN3032703
anti-SP1 antibody



[Go to Product page](#)

5 Images

Overview

| | |
|--------------|--|
| Quantity: | 0.4 mL |
| Target: | SP1 |
| Reactivity: | Human |
| Host: | Mouse |
| Clonality: | Monoclonal |
| Conjugate: | This SP1 antibody is un-conjugated |
| Application: | Western Blotting (WB), ELISA, Immunofluorescence (IF), Flow Cytometry (FACS) |

Product Details

| | |
|---------------|---|
| Immunogen: | This SP1 antibody was produced from a mouse immunized with recombinant Specificity Protein 1. |
| Clone: | 1326CT463-109-176 |
| Isotype: | IgG1 kappa |
| Purification: | Purified |

Target Details

| | |
|-------------------|--|
| Target: | SP1 |
| Alternative Name: | SP1 (SP1 Products) |
| Background: | Specificity Protein 1/SP1 is a transcription factor that can activate or repress transcription in response to physiological and pathological stimuli. Binds with high affinity to GC-rich motifs and regulates the expression of a large number of genes involved in a variety of processes such |

Target Details

as cell growth, apoptosis, differentiation and immune responses. Highly regulated by post-translational modifications (phosphorylations, sumoylation, proteolytic cleavage, glycosylation and acetylation). Binds also the PDGFR- alpha G-box promoter. May have a role in modulating the cellular response to DNA damage. Implicated in chromatin remodeling. In complex with ATF7IP, maintains telomerase activity in cancer cells by inducing TERT and TERC gene expression. [UniProt]

UniProt: [P08047](#)

Pathways: [Regulation of Lipid Metabolism by PPARalpha, Myometrial Relaxation and Contraction](#)

Application Details

Application Notes: Titration of the SP1 antibody may be required due to differences in protocols and secondary/substrate sensitivity.\. Flow Cytometry: 1:25,Immunofluorescence: 1:25,Western blot: 1:1000

Restrictions: For Research Use only

Handling

Format: Liquid

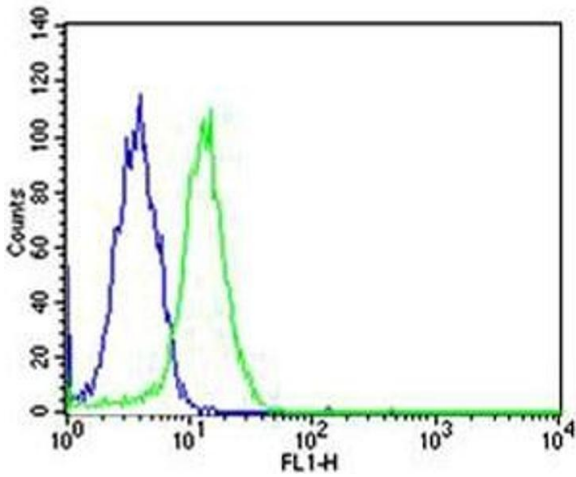
Buffer: In 1X PBS, pH 7.4, with 0.09 % sodium azide

Preservative: Sodium azide

Precaution of Use: This product contains Sodium azide: a POISONOUS AND HAZARDOUS SUBSTANCE which should be handled by trained staff only.

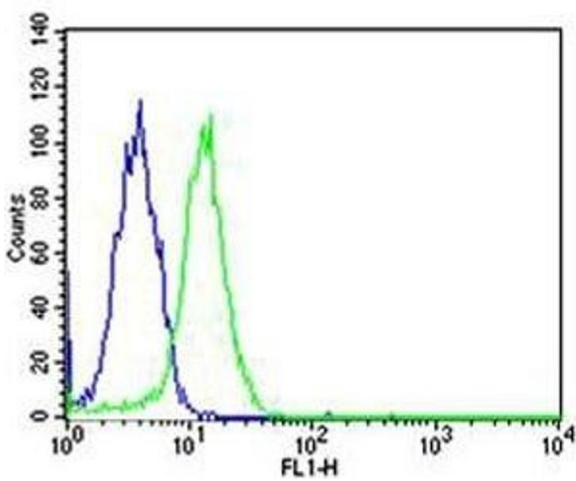
Storage: -20 °C

Storage Comment: Aliquot the SP1 antibody and store frozen at -20°C or colder. Avoid repeated freeze-thaw cycles.



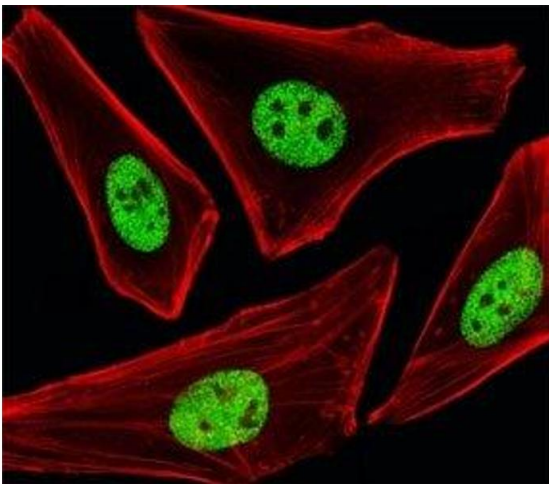
Flow Cytometry

Image 1. Flow cytometric analysis of HeLa cells using SP1 antibody (green) and an isotype control of mouse IgG1 (blue)



Flow Cytometry

Image 2. Flow cytometric analysis of HeLa cells using SP1 antibody (green) and an isotype control of mouse IgG1 (blue); Ab was diluted at 1:25 dilution.



Immunofluorescence

Image 3. Fluorescent image of HeLa cells stained with SP1 antibody at 1:25 dilution. An Alexa Fluor 488-conjugated goat anti-mouse IgG was used as the secondary Ab (green). Cytoplasmic actin was counterstained with Alexa Fluor 555 conjugated with Phalloidin (red).

Please check the [product details page](#) for more images. Overall 5 images are available for ABIN3032703.