

Datasheet for ABIN3032708
anti-SPHK1 antibody (AA 313-343)

6 Images

[Go to Product page](#)

Overview

Quantity:	0.4 mL
Target:	SPHK1
Binding Specificity:	AA 313-343
Reactivity:	Human
Host:	Rabbit
Clonality:	Polyclonal
Conjugate:	This SPHK1 antibody is un-conjugated
Application:	Western Blotting (WB), Immunohistochemistry (IHC), ELISA, Flow Cytometry (FACS)

Product Details

Immunogen:	A portion of amino acids 313-343 from the human protein was used as the immunogen for this SPHK1 antibody.
Isotype:	Ig Fraction
Purification:	Purified

Target Details

Target:	SPHK1
Alternative Name:	SPHK1 (SPHK1 Products)
Background:	SPHK1 is a novel lipid messenger with both intracellular and extracellular functions. Intracellularly, it regulates proliferation and survival, and extracellularly, it is a ligand for EDG1 (MIM 601974). Various stimuli increase cellular levels of SPP by activation of sphingosine

Target Details

kinase (SPHK), the enzyme that catalyzes the phosphorylation of sphingosine. Competitive inhibitors of SPHK block formation of SPP and selectively inhibit cellular proliferation induced by a variety of factors, including platelet-derived growth factor (e.g., MIM 173430) and serum.

UniProt: [Q9NYA1](#)

Pathways: [VEGF Signaling](#)

Application Details

Application Notes: Titration of the SPHK1 antibody may be required due to differences in protocols and secondary/substrate sensitivity.\. Western blot: 1:1000,IHC (Paraffin): 1:50-1:100,Flow Cytometry: 1:10-1:50

Restrictions: For Research Use only

Handling

Format: Liquid

Buffer: In 1X PBS pH 7.4 with 0.09 % sodium azide

Preservative: Sodium azide

Precaution of Use: This product contains Sodium azide: a POISONOUS AND HAZARDOUS SUBSTANCE which should be handled by trained staff only.

Storage: -20 °C

Storage Comment: Aliquot the SPHK1 antibody and store frozen at -20°C or colder. Avoid repeated freeze-thaw cycles.



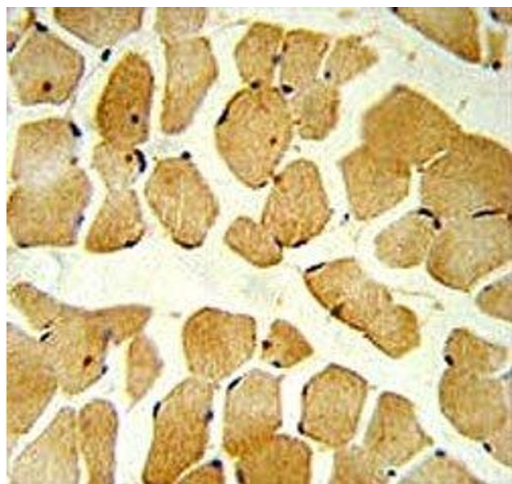
Western Blotting

Image 1. Western blot analysis of SPHK1 antibody and 293 lysate



Western Blotting

Image 2. Western blot analysis of SPHK1 antibody and 293 lysate



Immunohistochemistry

Image 3. SPHK1 antibody IHC analysis in formalin fixed and paraffin embedded skeletal muscle.

Please check the [product details page](#) for more images. Overall 6 images are available for ABIN3032708.